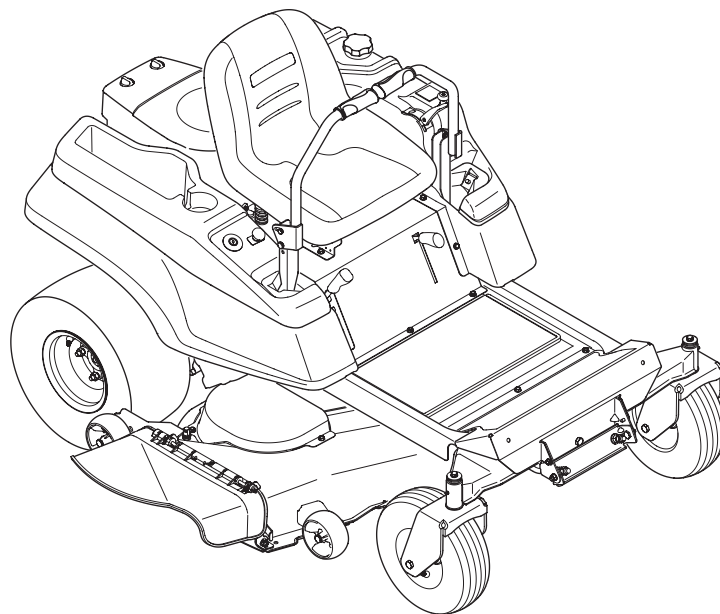




ILLUSTRATED PARTS MANUAL



RZT Series Tractor — Mustang ZT50

TROY-BILT LLC, P.O. BOX 361131 CLEVELAND, OHIO 44136-0019

To The Owner

Thank you for purchasing an MTD Zero-Turn Tractor. It was carefully engineered to provide excellent performance when properly operated and maintained.

All information in this manual is relative to the most recent product information available at the time of printing. Please be aware that this Illustrated Part's Manual may cover a range of product specifications for various models.

Components listed and/or illustrated in this manual may not be applicable to all models. We reserve the right to change product specifications, designs and equipment without notice and without incurring obligation.

Throughout this manual, all references to *right* (RH) and *left* (LH) are observed from the operating position.

Table of Contents

Axle, Front	4	Mower Deck	12
Battery	5	Muffler	6
Consoles	8	PTO Switch	5
Drive System	9	Seat	14
Engine Accessories	6	Solenoid	5
Frame	3	Switches, Interlock	5
Fuel Tank	6	Throttle/Choke Control	6
Deck Lift Handle/Linkage	10	Transmission	9
Hour Meter	5	Wheels, Rear	9
Lapbar Levers	10	Wheels, Front	4

Record Product Information

To ease in ordering replacement parts, please locate the model plate on the equipment and record the information in the provided area to the right. You can locate the model plate by looking beneath the seat.

MODEL NUMBER

--	--	--	--	--	--	--	--	--	--	--

SERIAL NUMBER

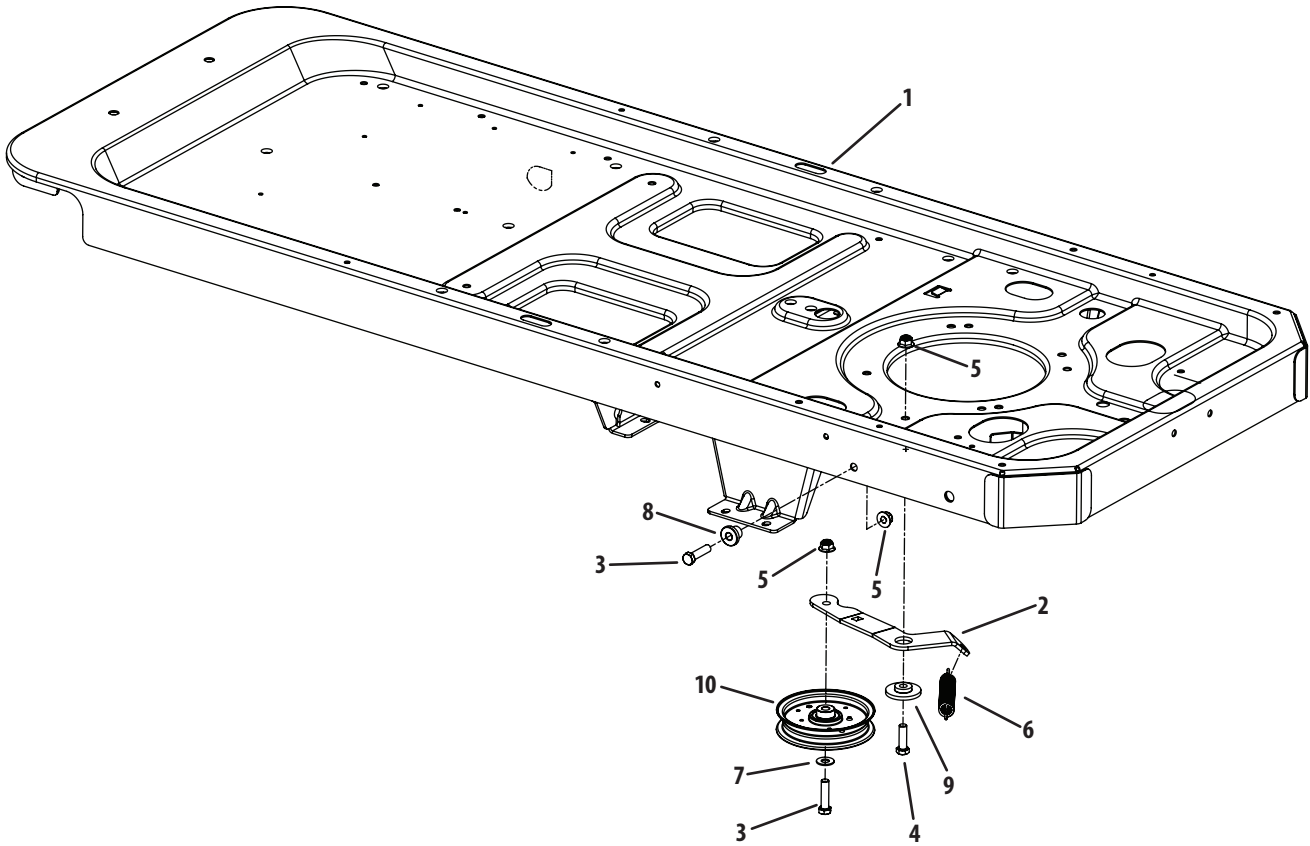
--	--	--	--	--	--	--	--	--	--	--

Painted Parts

When ordering painted service parts, a four digit color suffix must be added to the part number (e.g. 783-XXXXX-0637). Please refer to the table below for current color codes:

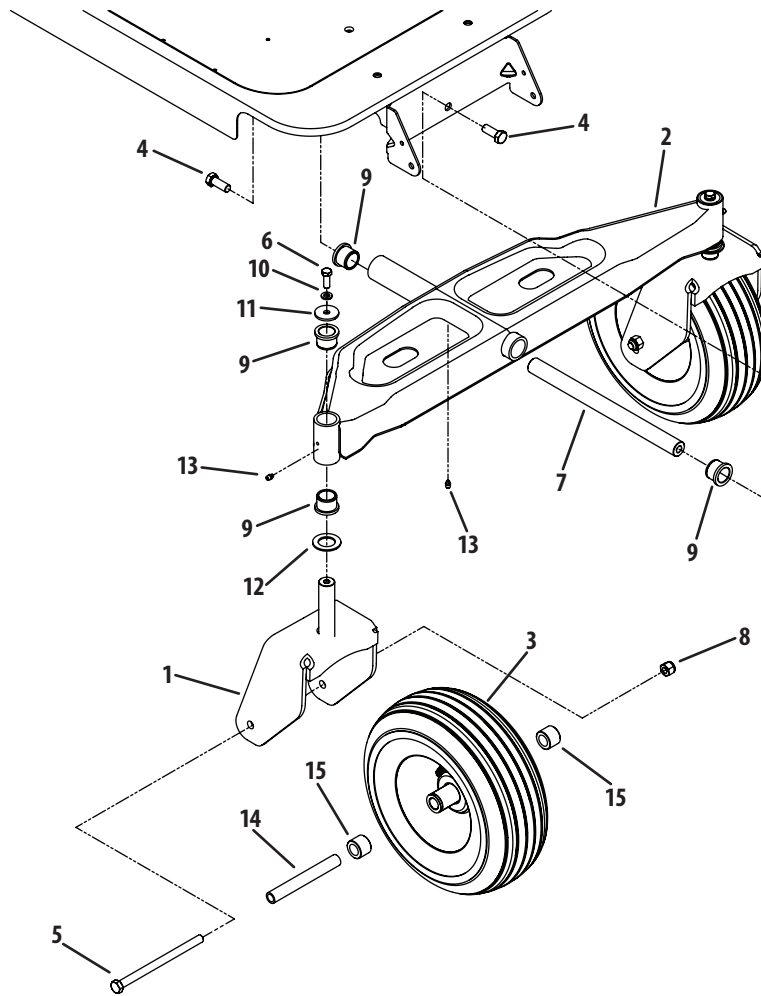
0637	Black	0674	Yellow (Yard-Man)
0709	Dark Green (Bolens, Yard-Man)	0650	Metallic Red (White Outdoor)
0662	Oyster Gray (MTD Gold)	0629	Silver Flake (MTD Platinum)
0638	Red (Yard Machines, Huskee, Troy-Bilt, MTD)	04038	Day Orange (Daedong)
0691	Black Jack (MTD Gold, MasterCut)	04033	Flint Mica (Troy-Bilt XP)

Frame

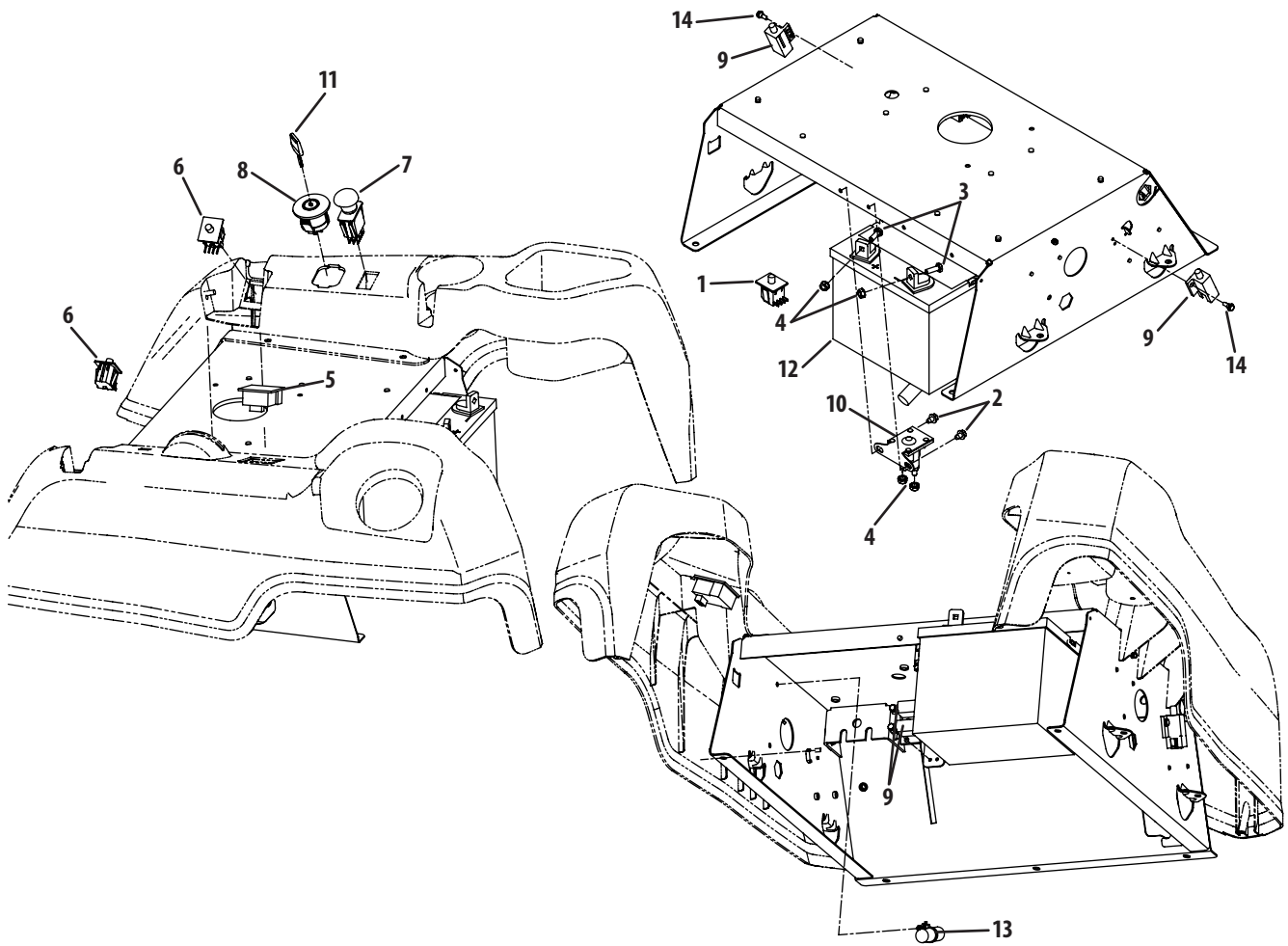


Ref.	Part Number	Description
1	603-04680	Frame
2	703-05829	Idler Arm
3	710-0520	Hex Cap Screw, $\frac{3}{8}$ -16 x 1.5
4	710-3005	Hex Cap Screw, $\frac{3}{8}$ -16 x 1.25
5	712-04065	Hex Flange Lock Nut, $\frac{3}{8}$ -16
6	732-0626	Extension Spring, .75 x 5.06
7	936-0300	Flat Washer, .406 x .875 x .059
8	738-04058	Shoulder Spacer, .38 x 1.0 x .7
9	738-04162A	Shoulder Spacer, .884 x 1.9
10	756-04129B	Idler Pulley

Front Axle

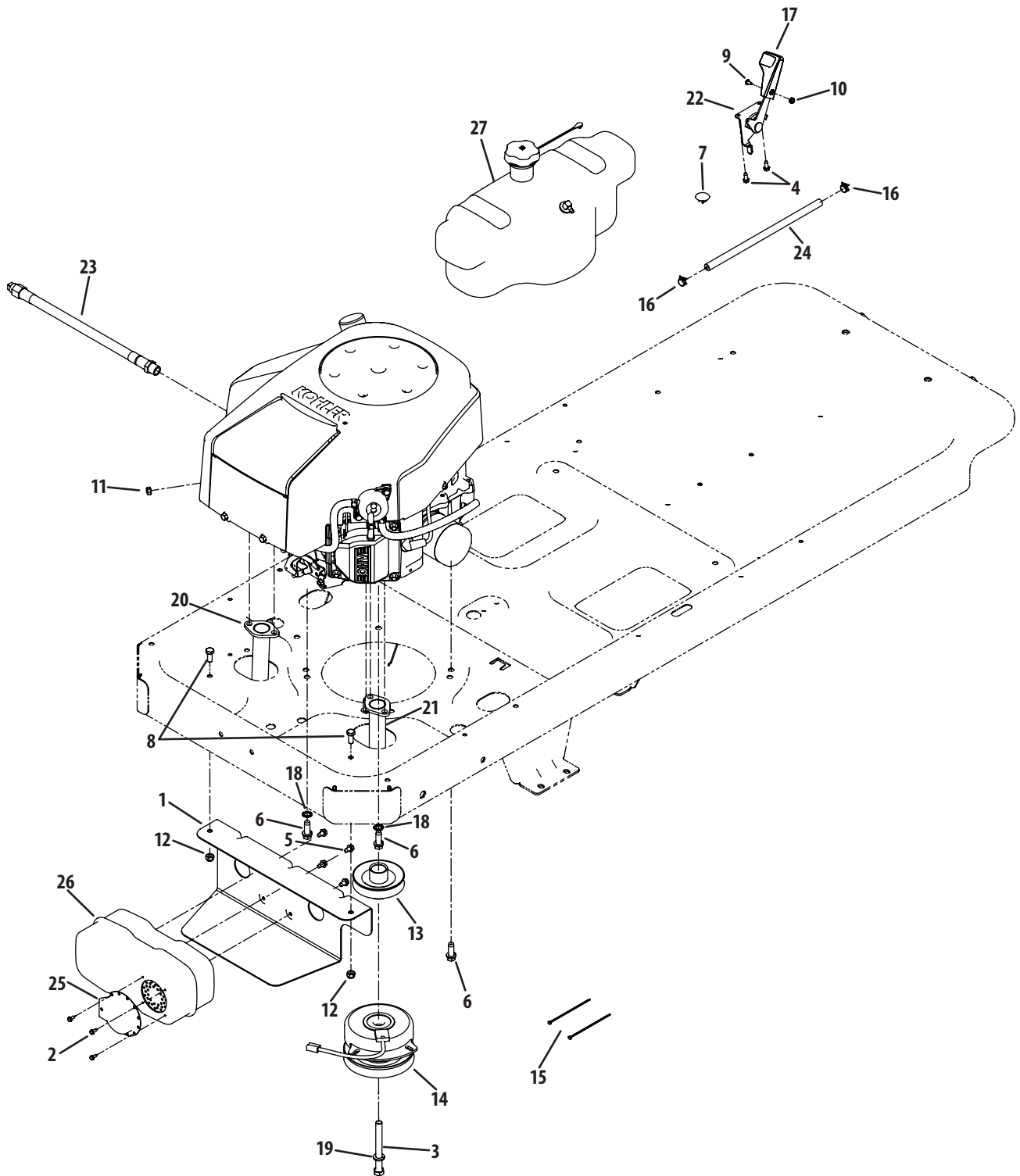


Ref.	Part Number	Description
1	603-04370	Castor Wheel Bracket
2	603-04385A	Front Pivot Axle
3	634-04321A-0911	Wheel Assembly, 13 x 5-6
—	734-04255A	Tire, 13 x 5-6
4	710-04186	Hex Lock Screw, 1/2-13 x 1.25
5	710-04652	Hex Cap Screw, 1/2-20 x 7.25
6	710-0514	Hex Cap Screw, 3/8-16 x 1.0
7	911-04228	Axle Shaft
8	912-3058	Hex Insert Lock Nut, 1/2-13
9	731-05500	Flange Bearing, 1.0 x 1.246
10	936-0169	Lock Washer, 3/8
11	936-0227	Flat Washer, .39 x 1.5 x .134
12	736-0250	Flat Washer, 1.0 x 1.75 x .10
13	937-3000	Lube Fitting, 3/16 Drive
14	750-04775A	Spacer, .51 x .75 x 5.825
15	750-04792	Hub, .76 x 1.23 x .92



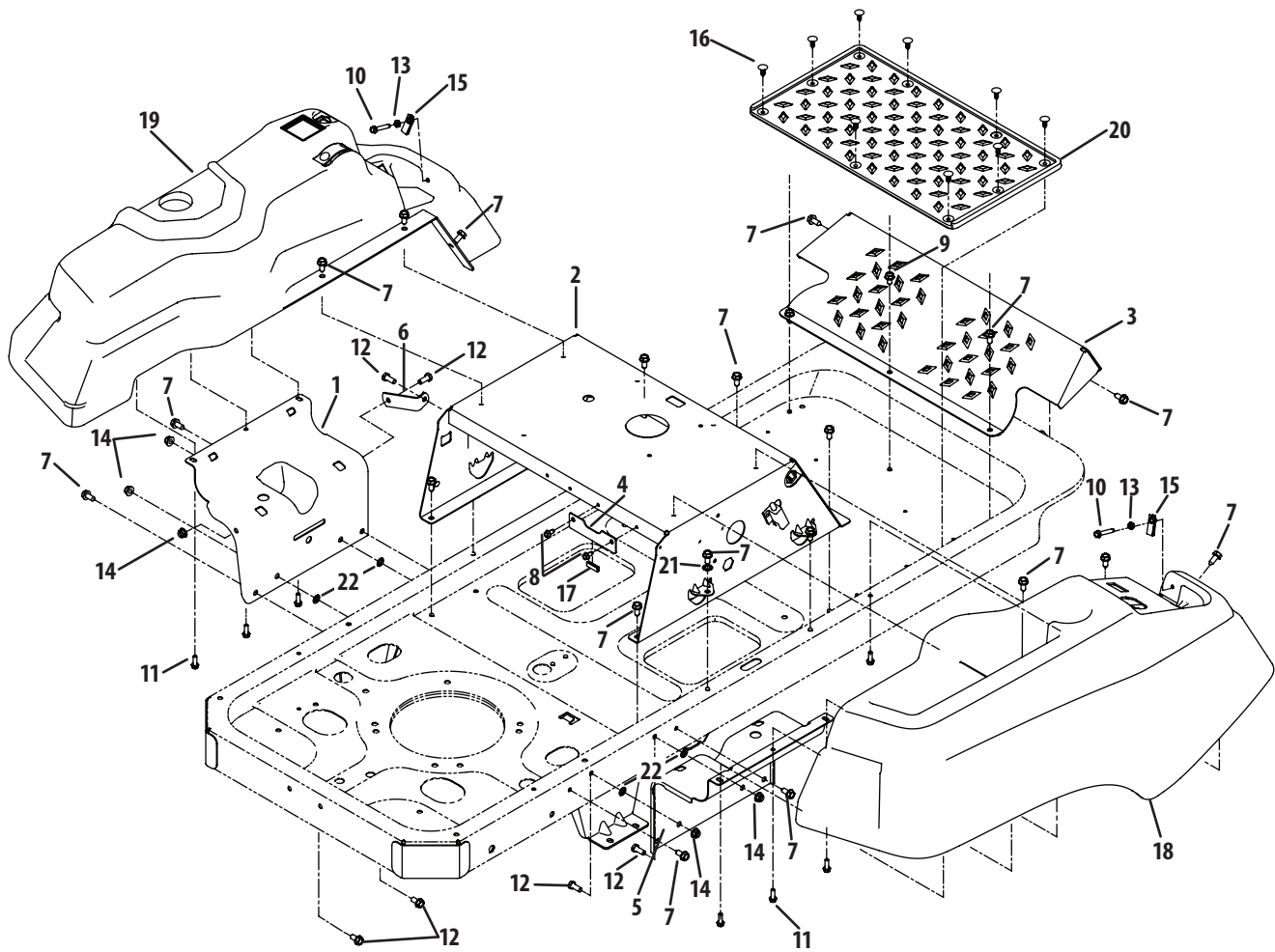
Ref.	Part Number	Description
1	925-04040	Seat Switch
2	710-0653	Hex Washer Screw, ¼-20 x .375
3	710-3015	Hex Screw, ¼-20 x .75
4	712-0271	Hex Nut, ¼-20
5	925-04022B	Hour Meter
6	925-04165	Double Pole Neutral Switch
7	925-04174	PTO Switch
8	925-04228	Ignition Switch
9	725-04363	Brake/Reverse Interlock Switch
10	725-04439	Solenoid
11	925-1745A	Key
12	925-1707D	Battery
13	726-0470	Cable Tie
14	738-04237A	Shoulder Screw, #10-32 x .5
NS	925-04847B	Wire Harness Assembly

Engine Connections



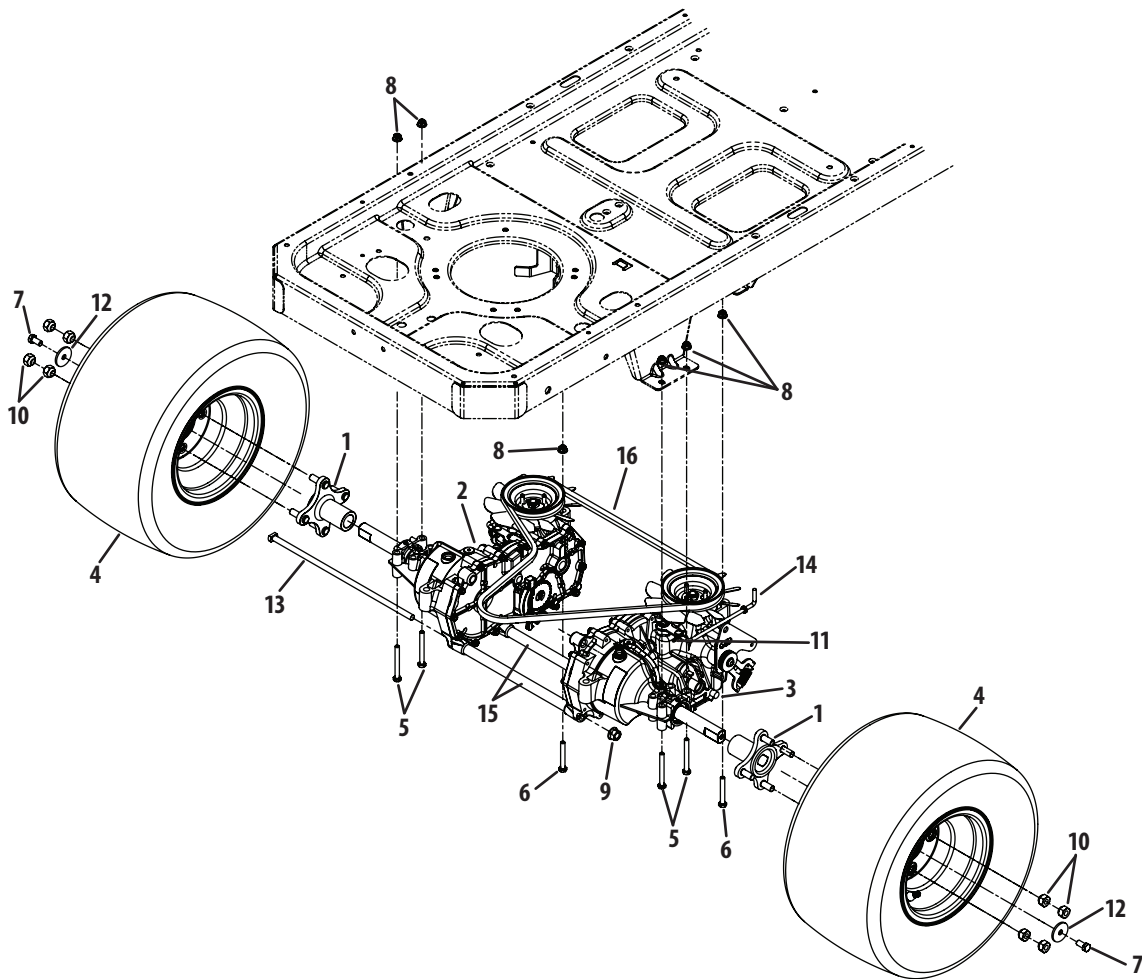
Ref.	Part Number	Description
1	703-05441A	Muffler Mounting Bracket
2	710-0227	Hex Washer Screw, #8-18 x .5
3	710-04379A	Hex Screw, 7/16-20 x 3.50
4	710-04261	Hex Washer Screw, #12-16 x .5
5	710-0599	Hex Washer Screw, 1/4-20 x .5
6	710-04683	Hex Washer Screw, 3/8-16 x 1.000
7	731-1999	Choke Plug
8	710-3008	Hex Screw, 5/16-18 x .75
9	710-3217	Machine Screw, #8-32 x .375
10	712-0142	Hex Nut, #8-32
11	712-0271	Hex Nut, 1/4-20
12	912-0429	Hex Lock Nut, 5/16-18
13	756-04376	Pulley
14	917-04552	Electric PTO Clutch
15	726-0197	Clutch Wire Tie
16	726-0205	Hose Clamp
17	731-04914	Throttle Control
18	736-0148	Lock Washer, 3/8
19	936-0171	Lock Washer, 7/16
20	751-10253	Exhaust Pipe, LH
21	751-10254	Exhaust Pipe, RH
22	746-04539	Throttle/Choke Cable
23	751-10291	Oil Drain Extension Hose
24	751-10349	Fuel Line Hose
25	751-0564B	Muffler Deflector
26	751-0616B	Muffler
27	N/A	Fuel Tank Assembly
—	935-0149	Fuel Tank Bushing
—	751-10442	Fuel Pick-Up Fitting
—	751-10692	Fuel Tank
—	751-10703A	Fuel Cap

Operator's Platform



Ref.	Part Number	Description
1	603-04564	Console Bracket Assembly
2	603-04663	Seat Frame Assembly
3	703-05373B	Foot Rest Bracket
4	703-05894	Battery Hold-Down Bracket
5	703-06451	Console Mount Bracket
6	703-06623	Fuel Tank Support Bracket
7	710-04484	Hex Washer Screw, 5/16-18 x .750
8	710-0599	Hex Washer Screw, 1/4-20 x .500
9	710-0604A	Hex Washer Screw, 5/16-18 x .625
10	710-0778	Hex Washer Screw, 1/4-20 x 1.500
11	710-0895	Hex Washer Screw, 1/4-15 x .750

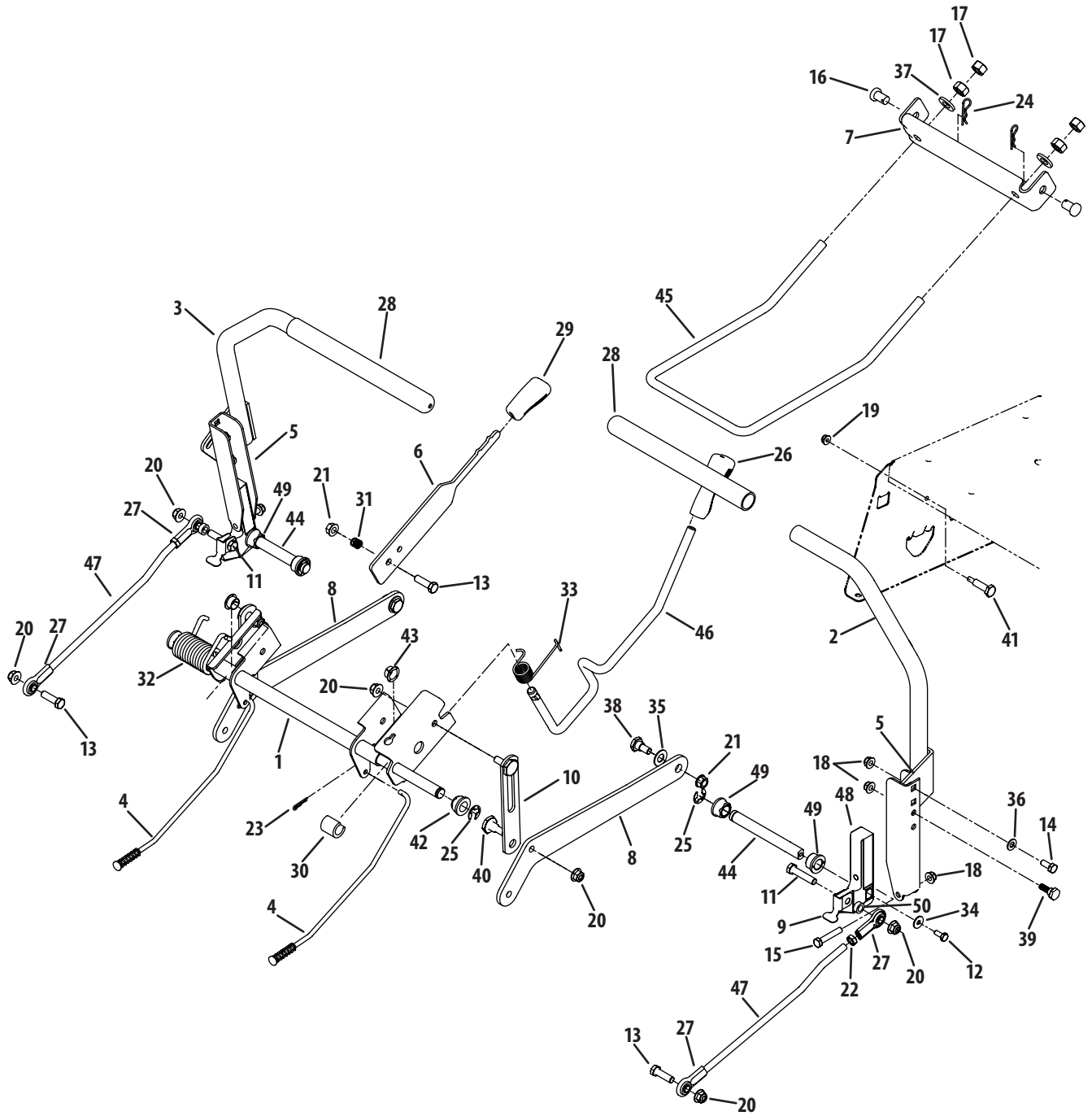
Ref.	Part Number	Description
12	710-3008	Hex Screw, 5/16-18 x .75
13	912-0298	Jam Nut, 1/4-20
14	712-04063	Flange Lock Nut, 5/16-18
15	712-04092	Speed Nut, 1/4-20
16	726-3046	Ratchet Clip
17	731-0511	Trim Strip
18	731-06233	RH Console
19	731-06263	LH Console
20	735-04082B	Foot Pad
21	736-0148	Lock Washer, 3/8
22	726-0201	Speed Nut, .3125



Ref.	Part Number	Description
1	918-04317	Wheel Hub
2	918-04431A	Transmission Assembly, LH
3	918-04432A	Transmission Assembly, RH
4	634-04172A	Wheel Assembly, 18 x 9.5 x 8
—	734-1729	Tire, 18 x 9.5 x 8
—	934-0255	Valve Assembly
—	603-04175	Rim Assembly
5	710-0176	Hex Screw, $\frac{5}{16}$ -18 x 2.75
6	710-0395	Hex Screw, $\frac{5}{16}$ -18 x 2.25
7	710-3119	Hex Lock Screw, $\frac{3}{8}$ -16 x .75

Ref.	Part Number	Description
8	712-04063	Hex Flange Lock Nut, $\frac{5}{16}$ -18
9	712-0459	Hex Flange Lock Nut, $\frac{7}{16}$ -20
10	712-3050	Lug Nut, $\frac{7}{16}$ -14
11	714-04040	Bow-Tie Cotter Pin
12	936-0227	Flat Washer, .39 x 1.5 x .134
13	738-04192	Rod, .405 x 14.0
14	747-04217C	Bypass Rod
15	750-04561	Tube, .45 x .69 x 10.2
16	954-04043A	V-Belt

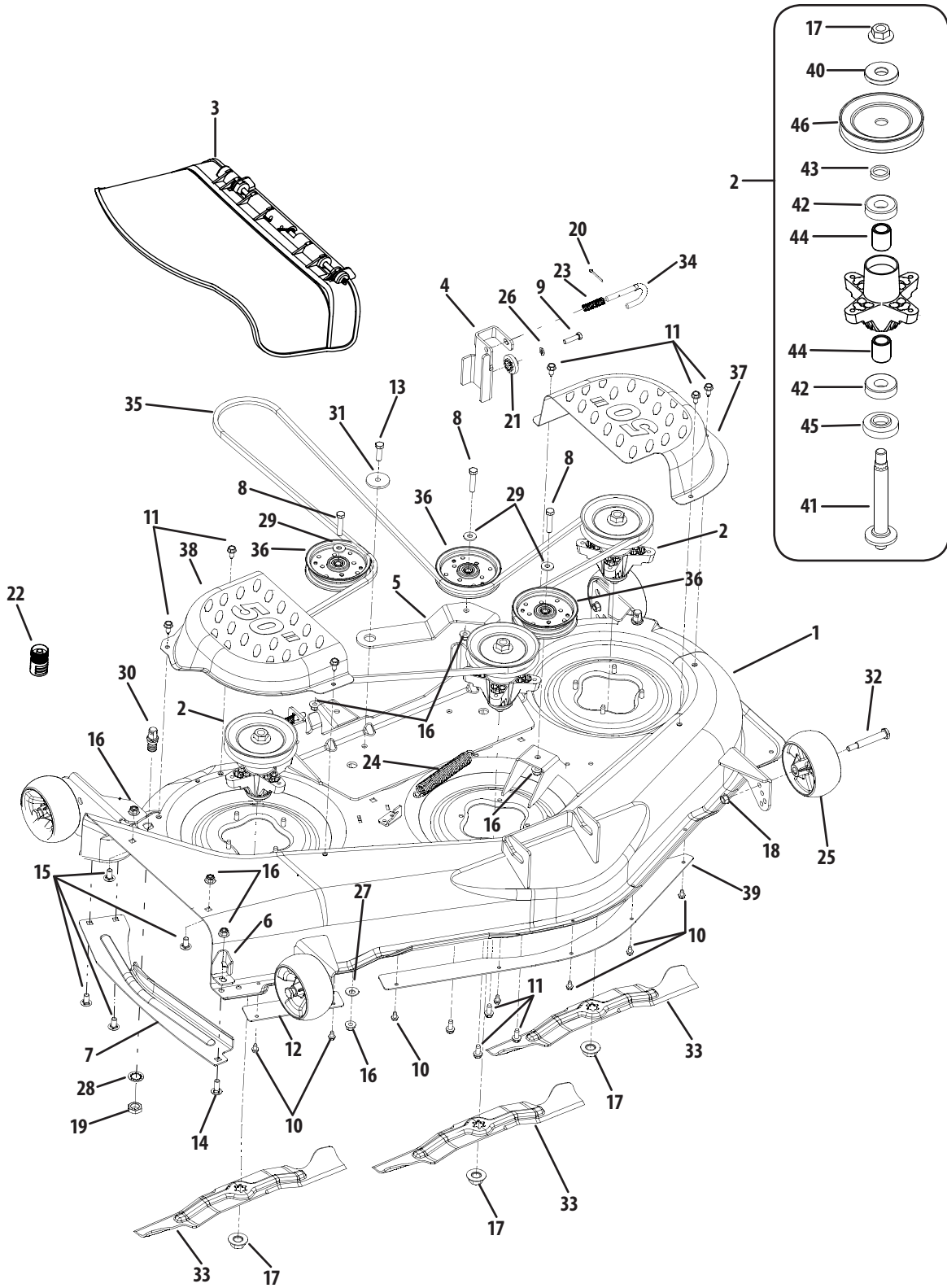
Operator's Controls



Ref.	Part Number	Description
1	603-04160B	Deck Lift Shift Assembly
2	603-04322	RH Lapbar Lever Assembly
3	603-04324	LH Lapbar Lever Assembly
4	947-04065	Brake Rod Assembly
5	703-05387B	Lapbar Pivot Bracket
6	703-05396A	Brake/Shabs Handle
7	703-05414A	Front Deck Hanger Bracket
8	703-05793A	Deck Lift Arm Plate
9	703-06096A	Switch Actuator Bracket
10	703-06169	Lift Link Plate
11	710-0347	Hex Screw, 3/8-16 x 1.75
12	710-0433	Hex Screw, 1/4-20 x .625
13	710-3005	Hex Screw, 3/8-16 x 1.25
14	710-3008	Hex Screw, 5/16-18 x .75
15	710-3180	Hex Screw, 5/16-18 x 1.75
16	911-0332	Clevis Pin, .50 x .78
17	912-0206	Hex Nut, 1/2-13
18	712-04063	Flange Lock Nut, 5/16-18
19	712-04064	Flange Lock Nut, 1/4-20
20	712-04065	Flange Lock Nut, 3/8-16
21	912-0431	Flange Lock Nut, 3/8-16
22	912-3001	Jam Nut, 3/8-24
23	714-04040	Bow-Tie Cotter Pin
24	914-04023	Cotter Pin, .080 x 1.5625
25	716-0106	E-Ring

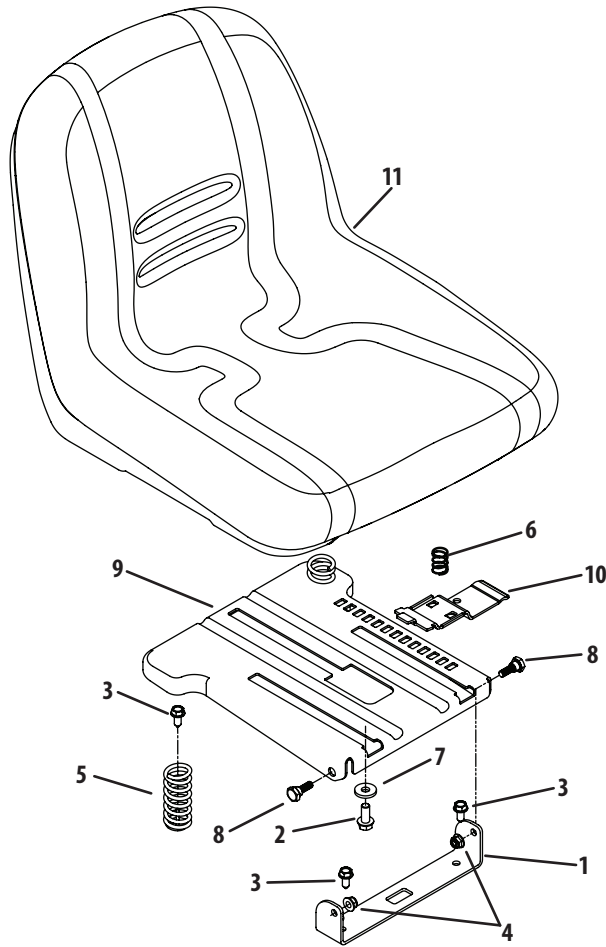
Ref.	Part Number	Description
26	720-0311	Handle Grip
27	723-04035	Rod End
28	731-04719A	Lapbar Grip
29	731-04735	Selector Handle
30	731-05732	Spacer, .621 x 1.00
31	932-0334	Compression Spring, .50 x .50
32	732-04420	Torsion Spring, 1.19 x 2.78
33	732-0874	Torsion Spring
34	736-0270	Bell Washer, .265 x .75 x .062
35	936-0272	Flat Washer, .510 x 1.00 x .060
36	936-0275	Flat Washer, .344 x .688 x .065
37	736-3019	Flat Washer, .531 x 1.062 x .134
38	736-0143	Shoulder Bolt, 3/8-16 x .496 x .336
39	938-0296	Shoulder Screw, 5/16-18 x .437 x .268
40	938-0507B	Shoulder Screw, .500 x .434
41	938-0572	Shoulder Screw, .374 x 1.16
42	941-0225	Hex Flange Bearing
43	741-3074	Flange Bearing, .626 x .938 x .344
44	747-04226A	Shaft Control
45	747-04401A	Front Hanger Deck Lift Rod
46	747-04637	Deck Lift Handle Rod
47	747-05057	Lapbar Rod Control
48	748-04169A	Control Hub
49	948-0227A	Hex Flange Bearing
50	750-04776	Spacer, .380 x .625 x .265

Mower Deck



Ref.	Part Number	Description
1.	903-04328A	Deck Housing
2.	918-04126B	Spindle Assembly
3.	631-04070A	Discharge Chute Assembly
4.	683-0254B	Deck Hanger Bracket
5.	703-05825B	Idler Arm
6.	703-3279	Stop Bracket
7.	703-3511A	Finger Guard
8.	710-0347	Hex Cap Screw, 3/8-16 x 1.75
9.	710-0528	Hex Cap Screw, 5/16-18 x 1.25
10.	710-0599	Hex Washer Head Screw, 1/4-20 x .5
11.	710-04484	Hex Washer Head Screw, 5/16-18 x .750
12.	783-04415	Skirt, RH
13.	710-3005	Hex Cap Screw, 3/8-16 x 1.25
14.	710-04095	Hex Screw, 3/8-16 x 1.00
15.	710-3178	Carriage Screw, 3/8-16 x .75
16.	712-04065	Hex Insert Flange Lock Nut, 3/8-16
17.	712-0417A	Hex Flange Nut, 5/8-18
18.	912-0431	Hex Flange Lock Nut, 3/8-16
19.	912-0641	Hex Nut, M16-1.5
20.	914-0470	Cotter Pin, 1/8 x 1.25
21.	917-04074	Deck Adjustment Gear
22.	921-04041	Water Nozzle Adapter
23.	732-04652	Compression Spring, .535 x 1.75

Ref.	Part Number	Description
24.	732-04609	Extension Spring, .94 x 6.74
25.	734-04155	Deck Ball Wheel, 5.0
26.	936-0119	Lock Washer, 5/16
27.	736-0407	Bell Washer, .45 x 1.0 x .062
28.	736-0225	Internal Tooth Lock Washer, 5/8
29.	736-3072	Flat Washer, .38 x .93 x .110
30.	737-04003D	Deck Wash Nozzle
31.	738-04162A	Shoulder Spacer, .884 x .190
32.	938-3056	Shoulder Screw, .5 x 2.5 x 3/8-16
33.	942-04053C	Blade, 2 in 1, 17.9
34.	747-1116	Deck Hanger Rod
35.	954-04044A	V-Belt
36.	756-04129B	Idler Pulley, 4.25 Dia
37.	783-04399	Belt Cover, LH
38.	783-04400	Belt Cover, RH
39.	783-04414A	Center Skirt
40.	736-0315	Flat Washer, .76 x 1.50 x .12
41.	738-1010A	Spindle Shaft, 5.75
42.	941-0919	Ball Bearing
43.	748-0160A	Spacer, .79 x 1.25 x .175
44.	750-1000	Spacer, .80 x 1.10 x 1.32
45.	750-1349A	Spacer, .79 x 1.82 x .55
46.	756-04216	V-Type Pulley, 5.39

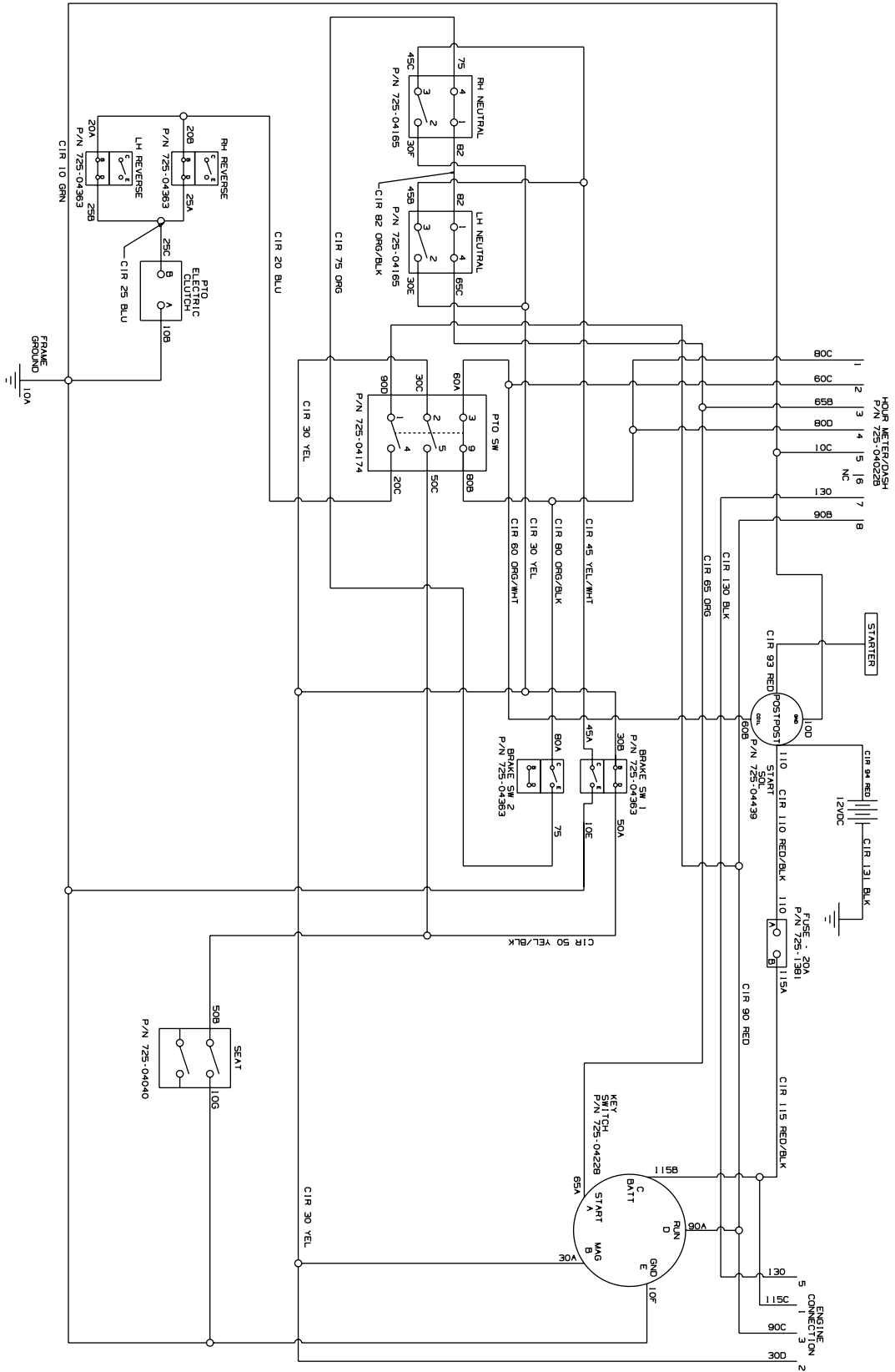


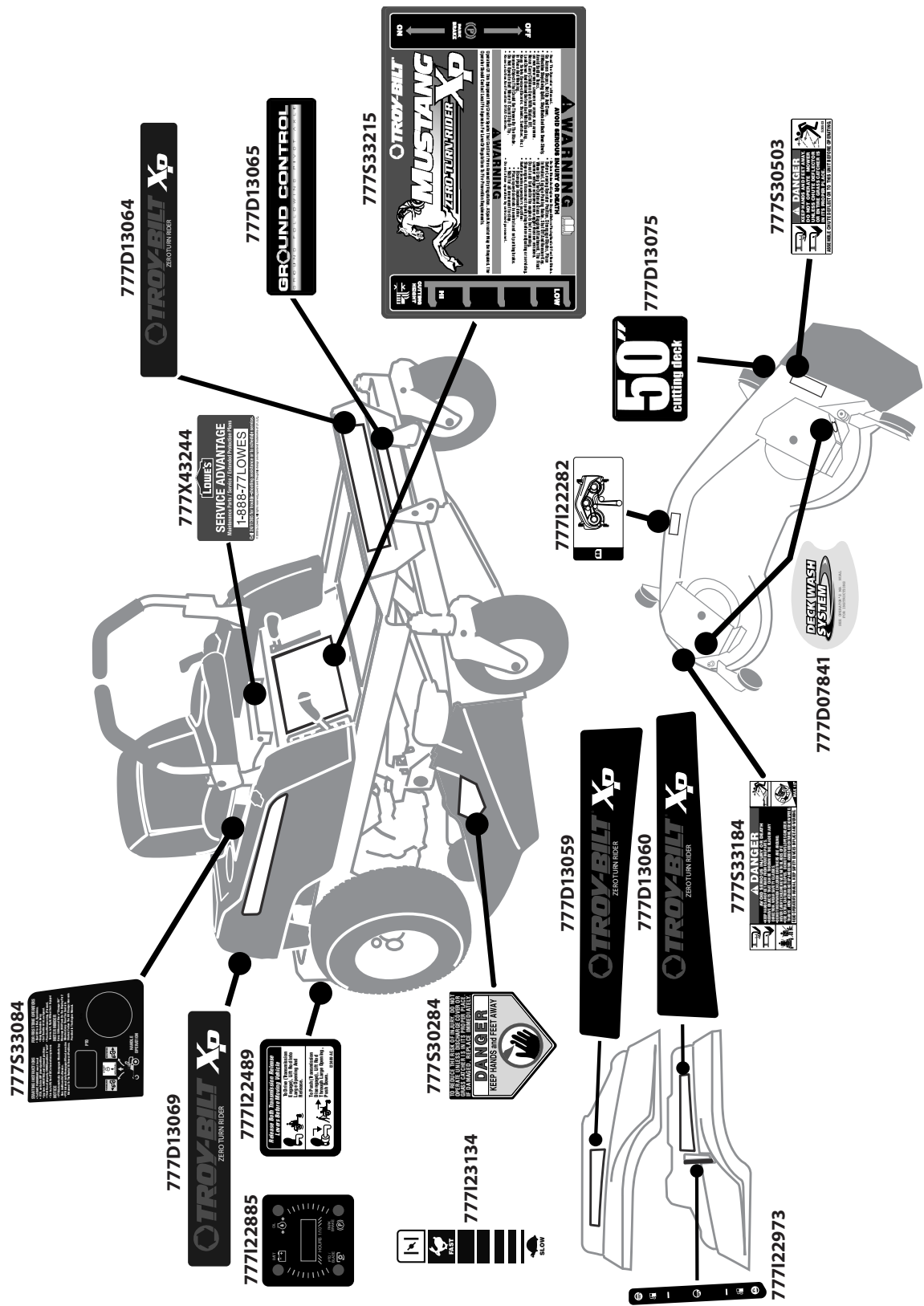
Ref.	Part Number	Description
1.	703-06941	Seat Bracket
2.	710-04482	Hex Flange Bolt, $\frac{3}{8}$ -16 x .875
3.	710-04484	Hex Washer Screw, $\frac{5}{16}$ -18 x .750
4.	712-04063	Flange Lock Nut, $\frac{5}{16}$ -18
5.	732-04035	Compression Spring
6.	732-04563	Compression Spring
7.	736-0258	Flat Washer, .385 x 1.0 x .135
8.	938-0296	Shoulder Screw, $\frac{5}{16}$ -18 x .437 x .268
9.	783-06049	Seat Mount Bracket
10.	783-06050	Seat Adjustment Lever
11	757-04103	High Back Seat

Notes

Blank lined paper for writing.

Electrical Schematic





To order replacement parts or locate your nearest service dealer call Customer Support at (800) 828-5500.
or visit www.troybilt.com to find the nearest authorized dealer in your area.

TROY-BILT LLC, P.O. BOX 361131 CLEVELAND, OHIO 44136-0019
