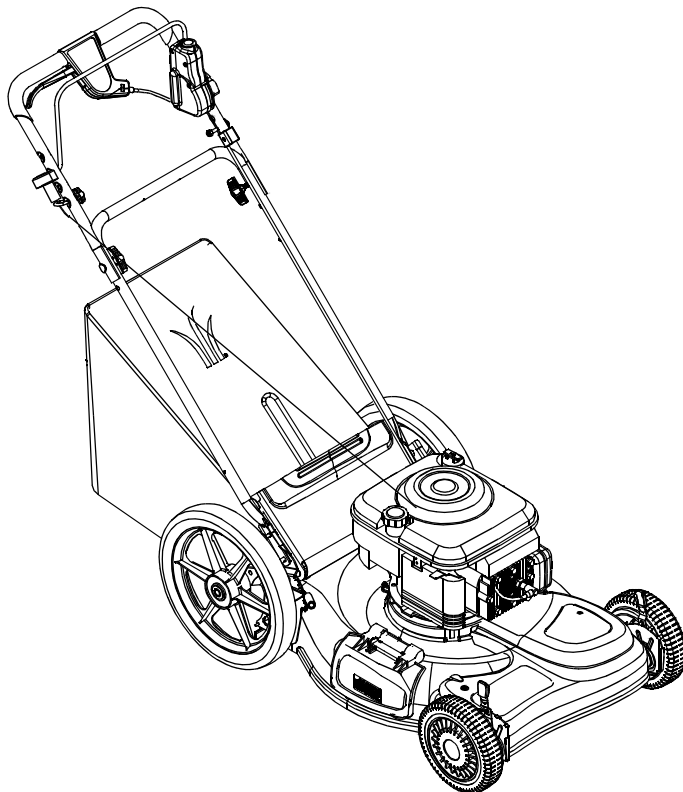




OPERATOR'S MANUAL



21" Self-Propelled Self Starter Mower

Model
560 Series

IMPORTANT: READ SAFETY RULES AND INSTRUCTIONS CAREFULLY

Warning: This unit is equipped with an internal combustion engine and should not be used on or near any unimproved forest-covered, brush-covered or grass-covered land unless the engine's exhaust system is equipped with a spark arrester meeting applicable local or state laws (if any). If a spark arrester is used, it should be maintained in effective working order by the operator. In the State of California the above is required by law (Section 4442 of the California Public Resources Code). Other states may have similar laws. Federal laws apply on federal lands. A spark arrester for the muffler is available through your nearest engine authorized service dealer or contact the service department, P.O. Box 368022 Cleveland, Ohio 44136-9722.

MTD PRODUCTS INC. P.O. BOX 368022 CLEVELAND, OHIO 44136-9722

TABLE OF CONTENTS

Content	Page
Important Safe Operation Practices.....	3
Slope Gauge.....	6
Unpacking.....	7
Assembling Your Lawn Mower.....	7
Know Your Lawn Mower	9
Operating Your Lawn Mower	10
Making Adjustments	12
Maintaining Your Lawn Mower.....	13
Off-Season Storage	16
Troubleshooting.....	17
Parts List.....	18

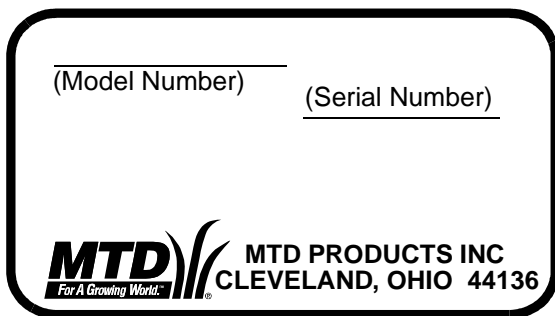
FINDING MODEL NUMBER

This Operator's Manual is an important part of your new lawn mower. It will help you assemble, prepare and maintain the unit for best performance. Please read and understand what it says.



Before you start assembling your new equipment, please locate the model plate on the equipment and copy the information from it in the space provided below. The information on the model plate is very important if you need help from our Customer Support Department or an authorized dealer.

- You can locate the model number by standing at the operating position and looking down at the rear of the mower. A sample model plate is explained below. For future reference, please copy the model number and the serial number of the equipment in the space below.



Copy the model number here: _____

Copy the serial number here: _____

CALLING CUSTOMER SUPPORT

If you have difficulty assembling this product or have any questions regarding the controls, operation or maintenance of this unit, please call the Customer Dealer Referral Line.



Call **1- (330) 220-4MTD (4683)** or **1- (800)-800-7310** to reach a Customer Support representative. Please have your unit's model number and serial number ready when you call. See previous section to locate this information. You will be asked to enter the serial number in order to process your call.

For more details about proper lawn care, visit our website at www.mtdproducts.com

SECTION 1: IMPORTANT SAFE OPERATION PRACTICES



WARNING: This symbol points out important safety instructions which, if not followed, could endanger the personal safety and/or property of yourself and others. Read and follow all instructions in this manual before attempting to operate this machine. Failure to comply with these instructions may result in personal injury. When you see this symbol—HEED ITS WARNING.



WARNING: The Engine Exhaust from this product contains chemicals known to the State of California to cause cancer, birth defects or other reproductive harm.



DANGER: This machine was built to be operated according to the rules for safe operation in this manual. As with any type of power equipment, carelessness or error on the part of the operator can result in serious injury. This machine is capable of amputating hands and feet and throwing objects. Failure to observe the following safety instructions could result in serious injury or death.

General Operation

1. Read this operator's manual carefully in its entirety before attempting to assemble this machine. Read, understand, and follow all instructions on the machine and in the manual(s) before operation. Be completely familiar with the controls and the proper use of this machine before operating it. Keep this manual in a safe place for future and regular reference and for ordering replacement parts.
2. This machine is a precision piece of power equipment, not a plaything. Therefore, exercise extreme caution at all times. Your unit has been designed to perform one job: to mow grass. Do not use it for any other purpose.
3. Never allow children under 14 years old to operate this machine. Children 14 years old and over should read and understand the operation instructions and safety rules in this manual and should be trained and supervised by a parent. Only responsible individuals who are familiar with these rules of safe operation should be allowed to use this machine.
4. Thoroughly inspect the area where the equipment is to be used. Remove all stones, sticks, wire, bones, toys and other foreign objects which could be tripped over or picked up and thrown by the blade. Thrown objects can cause serious personal injury. Plan your mowing pattern to avoid discharge of material toward roads, sidewalks, bystanders and the like. Also, avoid discharging material against a wall or obstruction which may cause discharged material to ricochet back toward the operator.
5. To help avoid blade contact or a thrown object injury, stay in the operator zone behind the handles and keep children, bystanders, helpers and pets at least 75 feet from the mower while it is in operation. Stop machine if anyone enters the area.
6. Always wear safety glasses or safety goggles during operation and while performing an adjustment or repair to protect your eyes. Thrown objects which ricochet can cause serious injury to the eyes.
7. Wear sturdy, rough-soled work shoes and close-fitting slacks and shirts. Shirts and pants that cover the arms and legs and steel-toed shoes are recommended. Never operate this machine in bare feet, sandals, slippery or light weight (e.g. canvas) shoes.
8. Do not put hands or feet near rotating parts or under the cutting deck. Contact with the blade can amputate hands and feet.
9. A missing or damaged discharge cover can cause blade contact or thrown object injuries.
10. Many injuries occur as a result of the mower being pulled over the foot during a fall caused by slipping or tripping. Do not hold on to the mower if you are falling; release the handle immediately.
11. Never pull the mower back toward you while you are walking. If you must back the mower away from a wall or obstruction first look down and behind to avoid tripping and then follow these steps:
 - a. Step back from the mower to fully extend your arms.
 - b. Be sure you are well balanced with sure footing.
 - c. Pull the mower back slowly, no more than half way toward you.
 - d. Repeat these steps as needed.
12. Do not operate the mower while under the influence of alcohol or drugs.
13. Do not engage the self-propelled mechanism on units so equipped while starting engine.
14. The blade control handle is a safety device. Never attempt to bypass its operation. Doing so makes the safety device inoperative and may result in personal injury through contact with the rotating blade. The blade control handle must operate easily in both directions and automatically return to the disengaged position when released.
15. Never operate the mower in wet grass. Always be sure of your footing. A slip and fall can cause serious personal injury. If you feel you are losing your footing, release the blade control handle immediately and the blade will stop rotating within three seconds.
16. Mow only in daylight or in good artificial light. Walk, never run.
17. Stop the blade when crossing gravel drives, walks or roads.
18. If the equipment should start to vibrate abnormally, stop the engine and check immediately for the cause. Vibration is generally a warning of trouble.
19. Shut the engine off and wait until the blade comes to a complete stop before removing the grass catcher or unclogging the chute. The cutting blade continues to rotate for a few seconds after the engine is shut off. Never place any part of the body in the blade area until you are sure the blade has stopped rotating.

20. Never operate mower without proper trail shield, discharge cover, grass catcher, blade control handle or other safety protective devices in place and working. Never operate mower with damaged safety devices. Failure to do so, can result in personal injury.
21. Muffler and engine become hot and can cause a burn. Do not touch.
22. Only use parts and accessories made for this machine by the manufacturer. Failure to do so, can result in personal injury.
23. If situations occur which are not covered in this manual, use care and good judgment. Contact your dealer for assistance. Telephone 1-800-800-7310 for the name of your nearest dealer.

Slope Operation

Slopes are a major factor related to slip and fall accidents which can result in severe injury. Operation on slopes requires extra caution. If you feel uneasy on a slope, do not mow it. For your safety, use the slope gauge included as part of this manual to measure slopes before operating this unit on a sloped or hilly area. If the slope is greater than 15 degrees, do not mow it.

Do:

1. Mow across the face of slopes; never up and down. Exercise extreme caution when changing direction on slopes.
2. Watch for holes, ruts, rocks, hidden objects, or bumps which can cause you to slip or trip. Tall grass can hide obstacles.
3. Always be sure of your footing. A slip and fall can cause serious personal injury. If you feel you are losing your balance, release the blade control handle immediately, and the blade will stop rotating within 3 seconds.

Do Not:

1. Do not mow near drop-offs, ditches or embankments, you could lose your footing or balance.
2. Do not mow slopes greater than 15 degrees as shown on the slope gauge.
3. Do not mow on wet grass. Unstable footing could cause slipping.

Children

Tragic accidents can occur if the operator is not alert to the presence of children. Children are often attracted to the mower and the mowing activity. They do not understand the dangers. Never assume that children will remain where you last saw them.

1. Keep children out of the mowing area and under the watchful care of a responsible adult other than the operator.
2. Be alert and turn mower off if a child enters the area.
3. Before and while moving backwards, look behind and down for small children.
4. Use extreme care when approaching blind corners, doorways, shrubs, trees, or other objects that may obscure your vision of a child who may run into the mower.
5. Keep children away from hot or running engines. They can suffer burns from a hot muffler.

6. Never allow children under 14 years old to operate a power mower. Children 14 years old and over should read and understand the operation instructions and safety rules in this manual and should be trained and supervised by a parent.

Service

Safe Handling Of Gasoline:

1. To avoid personal injury or property damage use extreme care in handling gasoline. Gasoline is extremely flammable and the vapors are explosive. Serious personal injury can occur when gasoline is spilled on yourself or your clothes which can ignite.
2. Wash your skin and change clothes immediately.
3. Use only an approved gasoline container.
4. Never fill containers inside a vehicle or on a truck or trailer bed with a plastic liner. Always place containers on the ground away from your vehicle before filling.
5. When practical, remove gas-powered equipment from the truck or trailer and refuel it on the ground. If this is not possible, then refuel such equipment on a trailer with a portable container, rather than from a gasoline dispenser nozzle.
6. Keep the nozzle in contact with the rim of the fuel tank or container opening at all times until fueling is complete. Do not use a nozzle lock-open device.
7. Extinguish all cigarettes, cigars, pipes and other sources of ignition.
8. Never fuel machine indoors because flammable vapors will accumulate in the area.
9. Never remove gas cap or add fuel while the engine is hot or running. Allow engine to cool at least two minutes before refueling.
10. Never over fill fuel tank. Fill tank to no more than ½ inch below bottom of filler neck to provide space for fuel expansion.
11. Replace gasoline cap and tighten securely.
12. If gasoline is spilled, wipe it off the engine and equipment. Move unit to another area. Wait 5 minutes before starting the engine.
13. Never store the machine or fuel container inside where there is an open flame, spark or pilot light as on a water heater, space heater, furnace, clothes dryer or other gas appliances.
14. To reduce fire hazard, keep mower free of grass, leaves, or other debris build-up. Clean up oil or fuel spillage and remove any fuel soaked debris.
15. Allow a mower to cool at least 5 minutes before storing.

General Service:

1. Never run an engine indoors or in a poorly ventilated area. Engine exhaust contains carbon monoxide, an odorless and deadly gas.
2. Before cleaning, repairing, or inspecting, make certain the blade and all moving parts have stopped. Disconnect the spark plug wire and ground against the engine to prevent unintended starting.

3. Check the blade and engine mounting bolts at frequent intervals for proper tightness. Also, visually inspect blade for damage (e.g., bent, cracked, worn) Replace blade with the original equipment manufacture's (O.E.M.) blade only, listed in this manual. "Use of parts which do not meet the original equipment specifications may lead to improper performance and compromise safety!"
4. Mower blades are sharp and can cut. Wrap the blade or wear gloves, and use extra caution when servicing them.
5. Keep all nuts, bolts, and screws tight to be sure the equipment is in safe working condition.
6. Never tamper with safety devices. Check their proper operation regularly.
7. After striking a foreign object, stop the engine, disconnect the spark plug wire and de-energize the starter. (See section "To De-energize Self Starter"). Thoroughly inspect the mower for any damage. Repair the damage before starting and operating the mower.
8. Never attempt to make a wheel or cutting height adjustment while the engine is running.
9. Grass catcher components, discharge cover, and trail shield are subject to wear and damage which could expose moving parts or allow objects to be thrown. For safety protection, frequently check components and replace immediately with original equipment manufacturer's (O.E.M.) parts only, listed in this manual. "Use of parts which do not meet the original equipment specifications may lead to improper performance and compromise safety!"
10. Do not change the engine governor setting or overspeed the engine. The governor controls the maximum safe operating speed of the engine.
11. Maintain or replace safety and instruction labels, as necessary.
12. Observe proper disposal laws and regulations. Improper disposal of fluids and materials can harm the environment.
13. ALWAYS de-energize self starter prior to performing any maintenance or service to the engine and or mower. Follow instructions both in the manual and on the engine and or machine to de-energize starter.

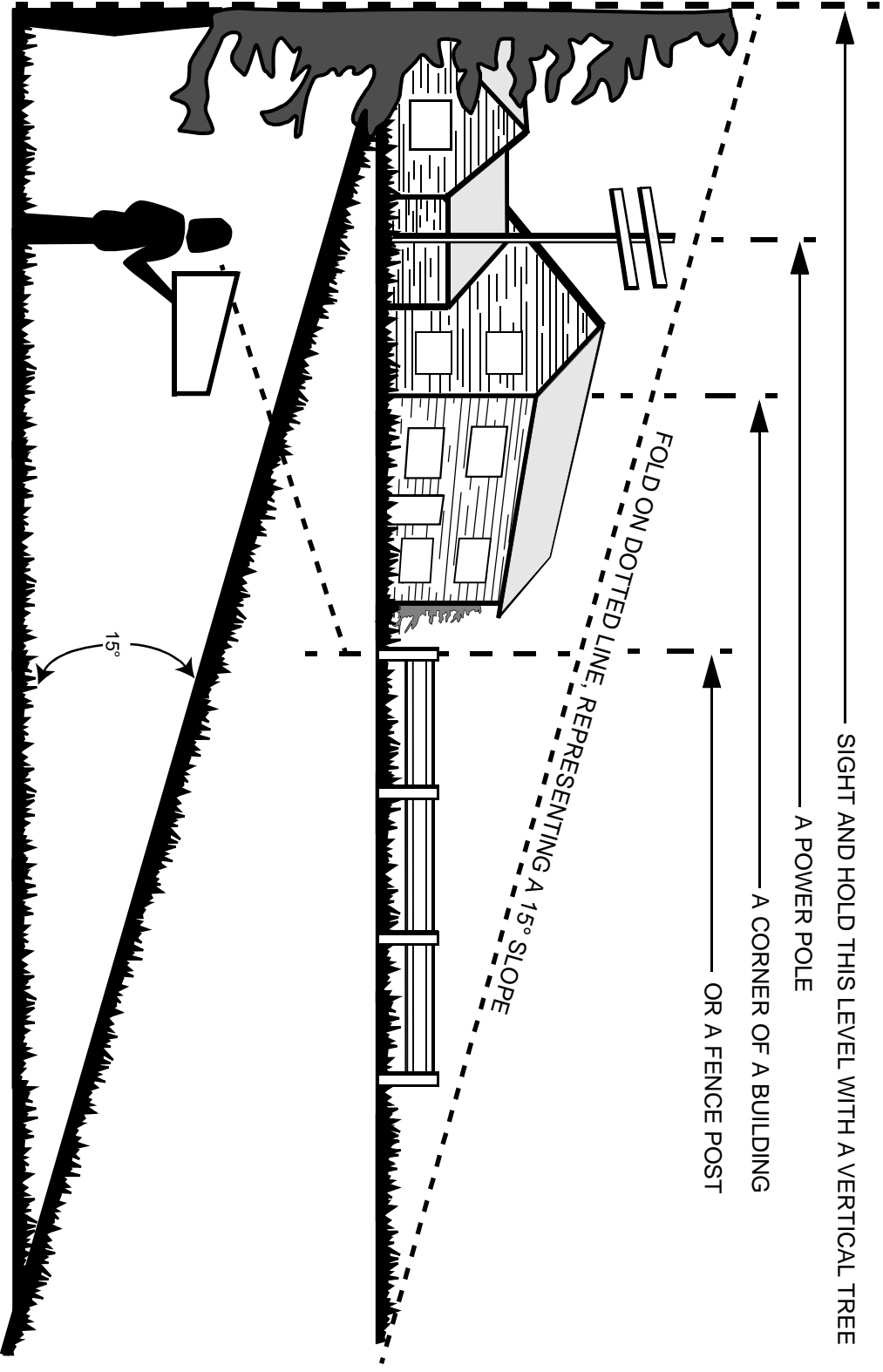
Your Responsibility

- Restrict the use of this power machine to persons who read, understand and follow the warnings and instructions in this manual and on the machine.



SECTION 2: SLOPE GAUGE

Use this page as a guide to determine slopes where you may not operate safely. **Do not operate** your lawn mower on such slopes.



WARNING

Do not mow on inclines with a slope in excess of 15 degrees (a rise of approximately 2-1/2 feet every 10 feet). A riding mower could overturn and cause serious injury. If operating a walk-behind mower on such a slope, it is extremely difficult to maintain your footing and you could slip, resulting in serious injury. Operate RIDING mowers up and down slopes, never across the face of slopes. Operate WALK-BEHIND mowers across the face of slopes, never up and down slopes.

SECTION 3: UNPACKING

To Remove Unit From Carton

- Remove staples, break glue on top flaps, or cut tape at carton end and peel along top flap to open carton.
- Remove loose parts included with your unit (i.e., operator's manual, etc.).

- Cut along corners and lay carton down flat. Remove packing material.
- Roll or slide unit out of carton.

SECTION 4: ASSEMBLING YOUR LAWN MOWER

Hardware Pack

1. Carriage Bolt 1/4-20 x .75" (2)
2. Wing Nut with Bell Washer (2)

IMPORTANT: This unit is shipped without gasoline or oil in the engine. Be certain to service engine with gasoline and oil before operating your mower.

NOTE: Reference to right or left hand side of the mower is observed from the operating position.



WARNING: Disconnect the spark plug wire and ground it against the engine to prevent unintended starting. Leave safety key in locked position.

Setting Up Your Lawn Mower

- Remove the grass catcher from the unit and set it out of the way. See Figure 1 (step 1).
- Raise the lower handle in the direction shown in Figure 1 (step 2) till it snaps into place.
- Raise the upper handle in the direction shown in Figure 1 (step 3). Tighten the wing nuts which are already on the handle.

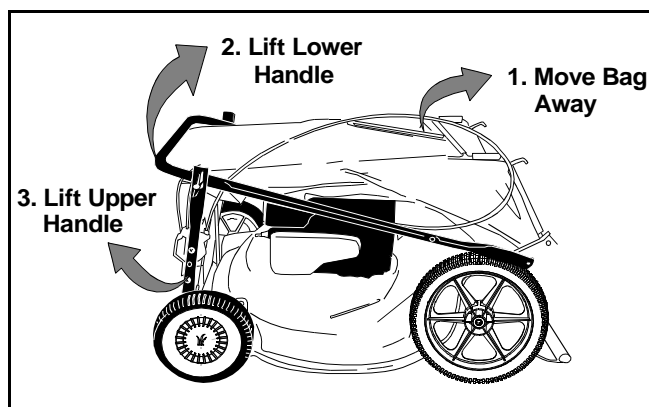


Figure 1

NOTE: Your mower is shipped with the handle in the higher height position. If you wish to lower the height of the handle, refer to the Adjustment Section at this time.

- Remove the hairpin clips from the outer hole in the weld pins on the handle mounting brackets. Using a pair of pliers, squeeze one leg of the lower handle against the handle mounting bracket. Insert the hairpin clip into the inner hole on the weld pin. Repeat on the other side. See Figure 2.

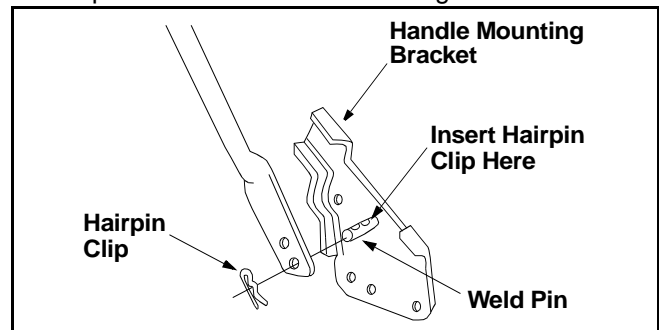


Figure 2

- The rope guide is attached to the right side of upper handle. Loosen the wing nut which secures the rope guide. See Figure 3.
- With the spark plug wire disconnected and grounded, and with the safety key in the locked position, pull the starter rope out of the engine. Slip the starter rope into the rope guide. Tighten wing nut. See Figure 3.

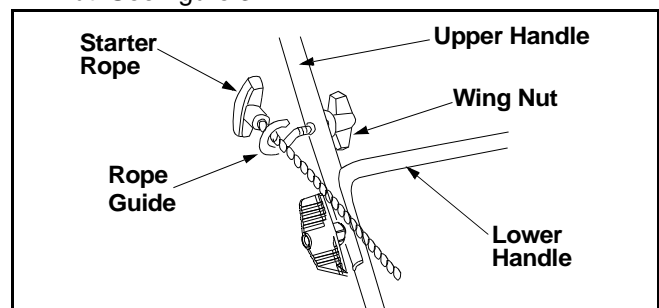


Figure 3

- Tighten all nuts and bolts securely.

- Insert post on cable ties into holes provided on the lower handle. Pull the cable tie tight and trim the excess. See Figure 4.

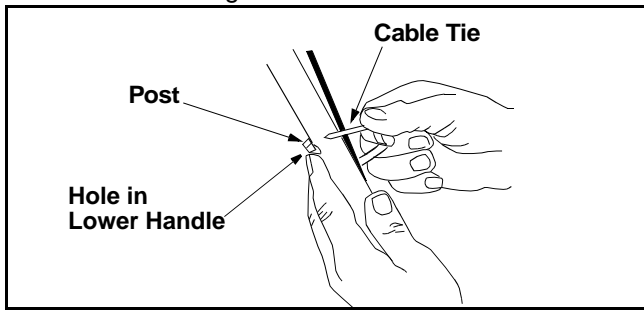


Figure 4

- Place each carriage bolt (found in the hardware pack included with your unit) in the upper hole of the handle mounting bracket from the inside out. Secure with the plastic wing nuts. See Figure 5.

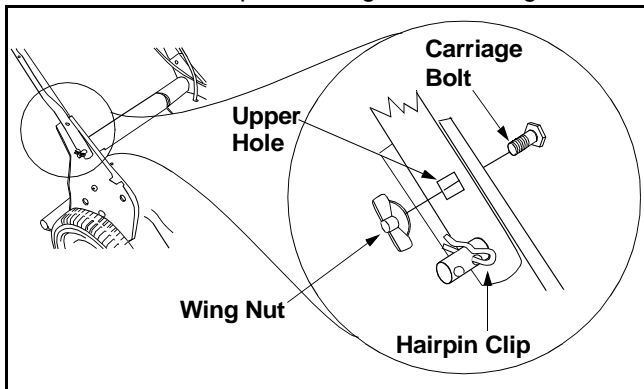


Figure 5

Attaching Grass Catcher To Mower

NOTE: The mulching baffle is already in place on the mower for shipping purposes. Your lawn mower is equipped with both a mulching baffle and a mulching plug. While the mulching baffle is located at the rear of the mower, the mulching plug is located on the right side of the cutting deck. Do not remove the mulching plug from the mower even when you are not mulching the grass.

- To remove the mulching baffle, lift the rear discharge door on the mower. Remove the mulching baffle. See Figure 6.

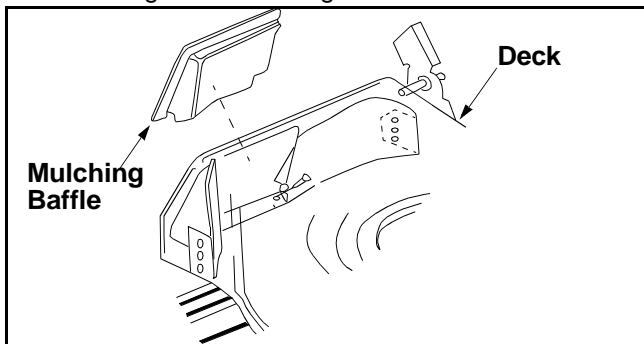


Figure 6

IMPORTANT: Make sure cables are routed to the outside of the handle so they are not in the way when attaching the grass catcher.

- Lift the rear discharge door on the mower.
- Place the hooks, found on both sides of the grass catcher frame, over the chute door pivot rod at the rear of the mower. See Figure 7. Release the rear discharge door.
- **To remove the grass catcher,** lift the rear discharge door on the mower. Lift the grass catcher up and off the pivot rod. Reinstall the mulching baffle and release the rear discharge door. See Figure 7.



WARNING: Never operate the mower unless the hooks on the grass catcher are firmly seated on the chute pivot rod, and the rear discharge door rests firmly against the top of the grass catcher.

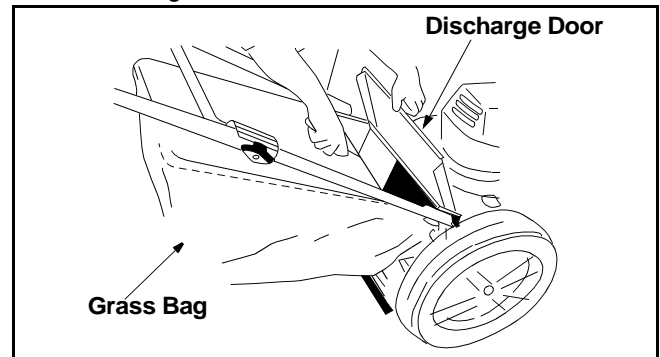


Figure 7

Converting To Side Discharge

- Lift the rear discharge door and install the mulching baffle. See Figure 6.
- On the side of the mower, lift the mulching plug. See Figure 8.
- Slide the two hooks of the side discharge chute under the hinge pin on the mulching plug assembly. Lower the side mulching plug.
- Do not remove the side mulching plug at any time, even when you are not mulching.

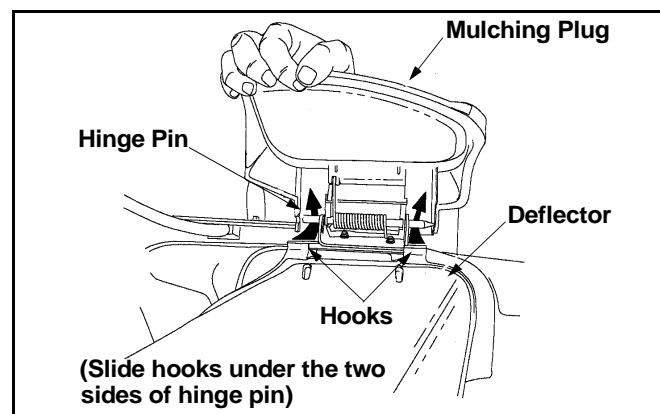


Figure 8

SECTION 5: KNOW YOUR LAWN MOWER



WARNING: Be familiar with all controls and their proper operation. Know how to stop the machine and disengage them quickly.

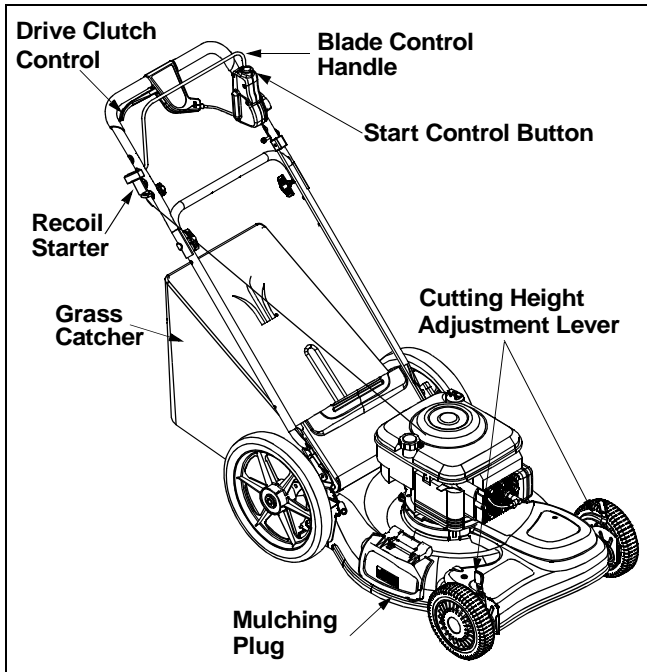


Figure 9

Blade Control Handle



WARNING: The blade control handle is a safety device. Never attempt to bypass its operations. Doing so, may result in personal injury through contact with the rotating blade. The blade rotates whenever the engine is running and when the self starter is de-energized.

The blade control handle is located on the upper handle of the mower. See Figure 9. The blade control handle and starter control button must be depressed in order to operate the unit. Release the blade control handle to stop the engine and blade and to energize the self starter.

Recoil Starter

The recoil starter handle is attached to the upper handle. See Figure 9. The recoil starter is used to start the engine when the self starter is in the de-energized mode.

Grass Catcher

The grass catcher, located at the rear of the mower, is used to bag the grass clippings for disposal at another site. Once the bag is full, it has to be removed from the mower and emptied before any further mowing.

Cutting Height Adjustment Lever

These levers are located on each wheel and they are used to adjust the cutting height. All four levers have to be at the same relative position to ensure an uniform cut.

Safety Key

The safety key is located on the engine. See Figure 9. The safety key is a safety device used to activate and deactivate the self starter system. The self starter system will not work without the key in it's proper position. See engine manual for more information pertaining to the safety key.

NOTE: The safety key must be in the run position to start the mower for both systems, either the self starter or recoil starter.

Mulching Plug

Both the mulching baffle and the mulching plug are used only for mulching purposes. Instead of collecting the grass clippings in a grass catcher, your mower has the option of recirculating the clippings back to the lawn.

Drive Clutch Control

The drive clutch control lever is located on the upper handle and is used to engage the drive. Squeeze lever against the upper handle to engage the drive; release drive clutch control to slow down or stop the mower.

Start Control Button

The start control button is located on the upper left side of the handle. See Figure 9. The start control button must be depressed fully while pulling the blade control handle toward upper handle to start engine. The starter control button will automatically return to the off/up position once the blade control handle is released.

NOTE: The starter button must be depressed to start the engine with either the self starter or recoil starting system.

SECTION 6: OPERATING YOUR LAWN MOWER



WARNING: Read, understand, and follow all instructions and warnings on the machine and in this manual before operating.

Gas and Oil Fill-Up

Service the engine with gasoline and oil as instructed in the separate engine manual packed with your mower. Read instructions carefully.



WARNING: Use extreme care when handling gasoline. Gasoline is extremely flammable and the vapors are explosive. Never fuel machine indoor or while the engine is hot or running. Extinguish cigarettes, cigars, pipes, and other sources of ignition.

Before Starting Mower

- Attach spark plug wire to spark plug. Make certain the metal cap on the end of the spark plug wire (inside the rubber boot) is fastened securely over the metal tip on the spark plug.
- Check the drive clutch control for proper adjustment. If the mower does not propel itself or the drive wheels hesitate with the drive clutch engaged, perform the drive clutch control adjustment as instructed in the ADJUSTMENT section.

First Time Starting Engine

NOTE: Use recoil starter rope to start engine for the very first time. The mower is shipped with the safety key in the locked position and the self starter in the de-energized mode, follow instructions as follows:

1. Make sure that the drive clutch control is adjusted so the drive belt is as loose as possible.
2. Place lawn mower on a level surface outdoors.
3. Remove clear plastic packaging under fuel cap.
4. Check oil level.
5. Open shut off valve (if equipped) 1/4 turn.
6. Push spark plug wire firmly on spark plug.
7. Turn safety key 1/4 turn clockwise to RUN position.
8. Firmly push primer bulb 3 times.
9. While standing in the operating position, depress the starter control button fully with the thumb of your right hand.
10. Using your left hand, pull the blade control handle all the way toward the upper handle. See Figure 10.
11. Release the button.
12. Grasp recoil starter handle with your right hand and slowly pull towards you until you feel a slight resistance, then pull firmly until your arm is fully extended.

13. If engine does not start by the second pull, repeat steps 8, 9, 10, 11, and 12.

Second Time Starting Engine

NOTE: Follow these instructions if the self starter is already in the energized mode.



WARNING: NEVER assume starter is in the de-energized mode, even if the key is in the locked position and/or removed from the engine. ALWAYS de-energize starter prior to performing any maintenance or service to the engine and/or mower. Follow instructions on the engine and/or machine to de-energize starter.

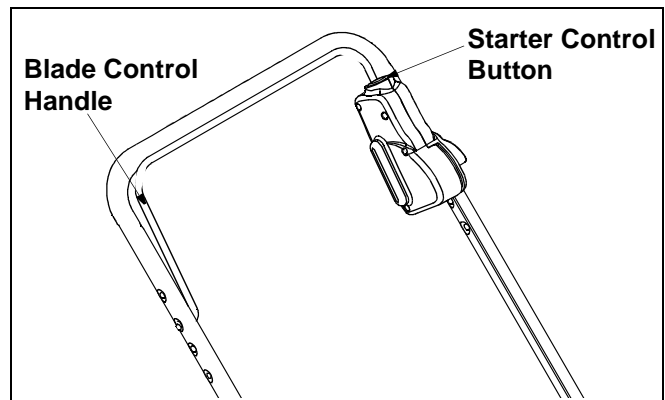


Figure 10

1. Check oil level and fuel, if necessary.
2. Open shut off valve (if equipped) 1/4 turn.
3. Turn safety key 1/4 turn clockwise to RUN position.
4. Firmly push primer bulb 3 times (for a cold engine only!).
5. While standing at the upper handle, depress the starter control button with the thumb of your right hand.
6. Using your left hand, pull the blade control handle all the way toward the upper handle. See Figure 10. Starter will de-energize and engine will start. (NOTE: If engine does not start, release the blade control handle and follow steps 8, 9, 10, 11 and 12 in the "First Time Starting Engine" instructions.)

NOTE: If any problems are encountered, refer to the Trouble Shooting Guide for helpful information.

To Stop Engine And Blade

1. Release safety blade control handle (the start control button will automatically return to the off/up position), engine and blade will stop within a few seconds.

NOTE: Engine may stop with a ratcheting sound. This sound is the self starter being reactivated/energized for the next start.

2. Turn safety key 1/4 turn counterclockwise to Lock position. Remove key and store in a safe place.



WARNING: The blade continues to rotate for a 3 seconds after the blade control lever is released.

To De-Energize Self Starter

- Remove spark plug wire from spark plug.
- Turn safety key to RUN position (1/4 turn clockwise).
- While standing in the operating position, depress the starter control button fully with the thumb of your right hand.
- Using your left hand, pull the control handle all the way toward the upper handle. (Release button and wait until blade and starter stop rotating).
- Release safety blade control handle (the start control button will automatically return to the off/up position).
- Remove safety key.

NOTE: Engine will crank over upon actuating equipment starting controls, but will not spark if spark plug wire was removed from spark plug as described above. Once engine has stopped cranking, self starter is de-energized.



WARNING: Self Starting System: If these instructions are not followed, amputation or severe laceration can result.

- ALWAYS disconnect spark plug, de-energize starter, lock and remove safety key BEFORE performing ANY service to the engine or mower.
- DO NOT attempt any maintenance or repairs to the self starter.
- NEVER assume starter is de-energize, even if key is in LOCK AND REMOVE position and/or removed from engine.
- BEFORE removing grass or other debris from under mower deck; BEFORE changing oil, air filter or spark plug; BEFORE removing blade for servicing; BEFORE performing any other service to engine or mower; BEFORE transporting mower- ALWAYS DE-ENERGIZE SELF STARTER.
- ALWAYS lock and remove safety key and store in a safe place until next use. The safety key is designed and intended to be removed from engine when not in use. Removing key will prevent unsupervised or unexpected starting of mower by children or unsuspecting adults. The safety key must be in the locked position before it can be removed.

Using Your Rotary Mower



WARNING: Never operate your unit without the rear deflector or the grass catcher assembly in place.

- Be sure the lawn is clear of stones, sticks, wire, or other objects which could damage lawn mower or engine. Such objects could be accidentally thrown by the mower in any direction and cause serious personal injury to the operator and others.
- For best results, do not cut wet grass because it tends to stick to the underside of the mower, preventing proper discharge of grass clippings, and could cause you to slip and fall. New grass, thick grass or wet grass may require a narrower cut.
- For a healthy lawn, never cut more than one-third of the length of the grass at any one cutting. Lawn should be cut in the fall as long as there is growth.
- For effective mulching, do not cut wet grass because it tends to stick to the underside of the deck, preventing proper mulching of grass clippings. New or thick grass may require a narrower cut. The ground speed should be adjusted to the condition of the lawn. If mowing has been delayed and the grass has been allowed to grow in excess of 4", mulching is not recommended. Mow using the grass bag (if so equipped) to reduce the grass height to 3-1/4" maximum before mulching.



WARNING: If you strike a foreign object, stop the engine. Remove wire from spark plug and de-energize starter, thoroughly inspect the mower for any damage, and repair the damage before restarting and operating the mower. Excessive vibration of the mower during operation is an indication of damage. The unit should be promptly inspected and repaired.

SECTION 7: MAKING ADJUSTMENTS



WARNING: Be sure to disconnect the spark plug wire and DE-ENERGIZE starter before performing any adjustments or repairs. DO NOT attempt any maintenance or service to the engine and/or mower equipped with the safety key in the unlocked and/or energized mode.



WARNING: NEVER assume starter is de-energized, even if the key is in the locked position and/or removed from the engine. ALWAYS de-energize self starter prior to performing any maintenance or service to the engine and/or mower. Follow instructions on the engine and/or machine to de-energize starter.

Handle Height

Your mower is shipped with the handle in the higher height position. To lower the handle height for your convenience, proceed as follows.

- Remove the starter rope from the rope guide.
- Remove the upper handle by removing the hand knobs and carriage bolts. Lay the upper handle out of the way, being careful not to bend or kink cables.
- Remove carriage bolts and wing nuts.
- Remove the hairpin clips from the weld pins on the handle brackets. Press outward on the legs of the lower handle, and remove it from the mower.
- Turn the lower handle around so the notches on the bottom of the lower handle are facing forward as shown in Figure 11.

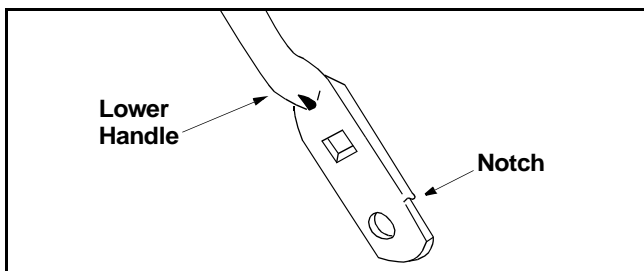


Figure 11

- Place the bottom holes in the handle over the weld pins in the handle mounting bracket and reassemble the upper handle.
- Place the hairpin clips in the inner holes in the weld pins and attach the starter rope as instructed in the assembly instructions.
- Replace carriage bolts and wing nuts.

Cutting Height

An adjusting plate and thumb lever at each wheel position provides cutting height adjustment. Each adjusting plate has nine height positions. Height of cut will be changed when the thumb lever is moved from one hole to another.

- Simply depress the lever towards wheel and move wheel and lever assembly to desired position. All wheels must be placed in the same relative position. See Figure 12.

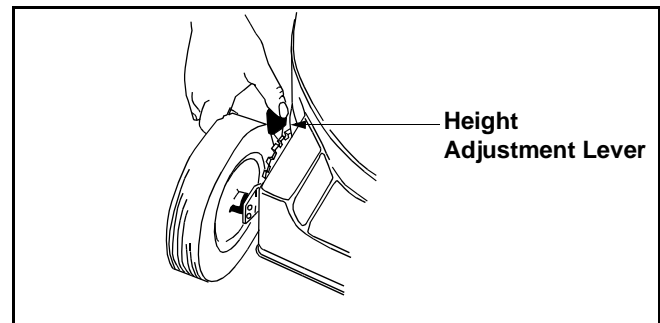


Figure 12

Adjusting Drive Clutch Control

The drive clutch adjustment wheel is located on the drive clutch control handle housing and is used to tighten or loosen tension on the drive cable. Perform this adjustment if the following exists.

- The mower does not propel itself with the drive clutch engaged.
- The mower's drive wheels hesitate with the drive clutch engaged.
- To resolve the above problems, rotate the adjustment wheel with your fingers: clockwise to tighten the cable, and counter-clockwise to loosen the cable. See Figure 13.

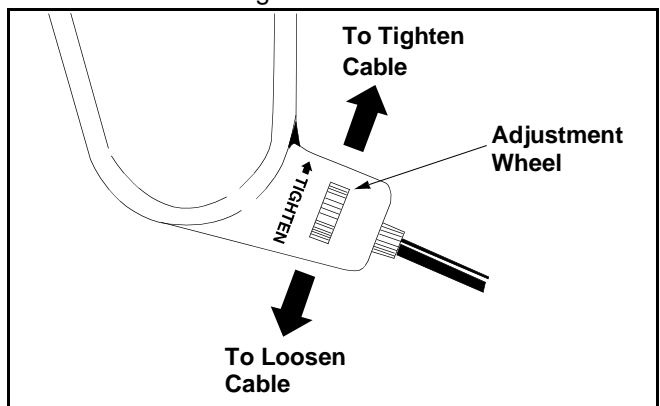


Figure 13

SECTION 8: MAINTAINING YOUR LAWN MOWER



WARNING: Be sure to disconnect the spark plug wire and DE-ENERGIZE starter before performing any repairs or maintenance. DO NOT attempt any maintenance or service to the engine and/or mower equipped with the safety key in the unlocked and/or energized mode.



WARNING: NEVER assume starter is de-energized, even if the key is in the locked position and/or removed from the engine. ALWAYS de-energize self starter prior to performing any maintenance or service to the engine and/or mower. Follow instructions on the engine and/or machine to de-energize starter.

- The warranty on this lawn mower does not cover items that have been subjected to operator abuse or negligence. To receive full value from the warranty, operator must maintain the lawn mower as instructed in this manual.
- Changing of engine governed speed will void engine warranty.
- Some adjustments will have to be made periodically to maintain your unit properly. All adjustments in the Making Adjustments section of this manual should be checked at least once each season.
- Periodically check all fasteners and make sure these are tight.
- Follow the maintenance schedule under Customer Responsibilities to get quality performance from your lawn mower.

General Recommendations

- Always observe safety rules when performing any maintenance.

Customer Responsibilities

MAINTENANCE SCHEDULE		After each use	Every 25 hours	Every 50 hours	Every 100 hours	Once a season	Before storage	SERVICE DATES					
PRODUCT	Lubricate wheels					✓							
	Lubricate blade control					✓							
	Clean deck	✓					✓						
	Blade care		✓				✓						
ENGINE	Change oil		✓				✓						
	Replace air filter				✓								
	Clean engine	✓					✓						
	Check spark plug			✓		✓							
	Check spark arrester (if any)			✓									

Lubrication

Blade Control

- Lubricate the pivot points on the blade control handle and the brake cable at least once a season with light oil. The blade control must operate freely in both directions. See Figure 14.

Rear & Side Discharge Doors

- The torsion springs and pivot points should be lubricated periodically with light oil to prevent any rust or binding. See Figure 14.

Wheels

- The wheels require no lubrication. However, if the wheels are removed for any reason, lubricate the surface of the axle bolt and the inner surface of the wheel with light oil.

Transmission

- The transmission is pre-lubricated and sealed at the factory and does not require lubrication on a regular basis as part of maintenance. However, if you disassemble the transmission for any reason, refill with two ounces of Alvania grease (part # 737-0168) as part of reassembly.

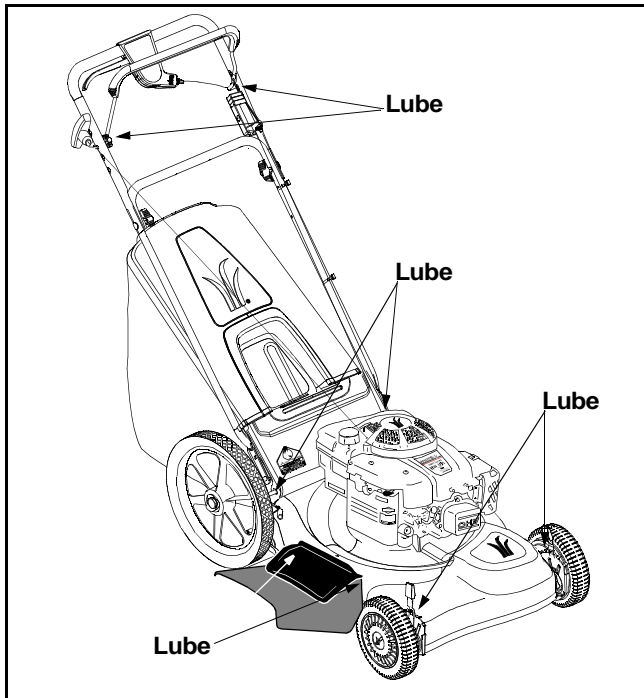


Figure 14

Engine

- Follow engine manual for instruction and schedule of lubrication.

NOTE: When tipping the unit, empty the fuel tank and keep engine spark plug side up.

Replacing Rear Flap

- To remove rear flap, cut off the flat end of the wire rod which secures it to the deck. See Figure 15.
- Attach the new flap and new rod to deck by bending the ends of the rod to secure to deck.

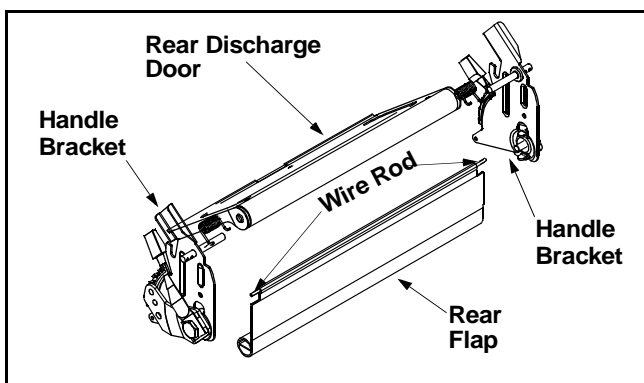


Figure 15

Deck

The underside of the mower deck should be cleaned after each use to prevent a buildup of grass clippings, leaves, dirt, or other matter. If this debris is allowed to accumulate, it will invite rust and corrosion, and may prevent proper mulching, discharge, or bagging. The deck may be cleaned by tilting the mower and scraping clean with a suitable tool (make certain the spark plug wire is disconnected).

IMPORTANT: We do not recommend the use of a pressure washer or garden hose to clean your unit.

NOTE: When tipping the unit, empty the fuel tank and keep the spark plug side of engine up. Never tip the mower more than 90 degrees and do not leave the mower tipped for any length of time. Oil can drain into the upper part of the engine causing a starting problem.

Engine

Refer to the separate engine manual for all engine maintenance instructions.

- Maintain engine oil as instructed in the separate engine manual packed with your unit.
- Service air cleaner every 25 hours under normal conditions. Poor engine performance and flooding usually indicate that the air cleaner should be serviced. To service the air cleaner, refer to the separate engine manual packed with your unit.
- The spark plug should be cleaned and the gap reset once a season. Spark plug replacement is recommended at the start of each mowing season.

Clean the engine regularly with a cloth or brush. Keep the cooling system (blower housing area) clean to permit proper air circulation which is essential to engine performance and life. Be certain to remove all grass, dirt, and combustible debris from muffler area.



WARNING: Make sure to avoid muffler and surrounding areas while the mower engine is hot because temperature of these areas of the engine may exceed 150° F.

Blade Care



WARNING: When removing the cutting blade for sharpening or replacement, protect hands by using heavy gloves or a thick rag to grasp the cutting blade.



WARNING: Periodically inspect the blade adapter and pulley for cracks, especially if you strike a foreign object. Replace when necessary.

To Remove Blade

- Remove the bolt and bell washer which hold the blade-pulley assembly to the engine crankshaft. See Figure 16. Remove assembly from crankshaft.

- Remove the two bolts and lock nuts from the blade assembly.
- Remove the blade from the blade adapter and pulley.

To Replace Blade:

- Before reinstalling the blade-pulley assembly to the unit, lubricate engine crankshaft and inner surface of the blade adapter with light oil or engine oil.
- Turn mower on its side making sure that the air filter and the carburetor are up.

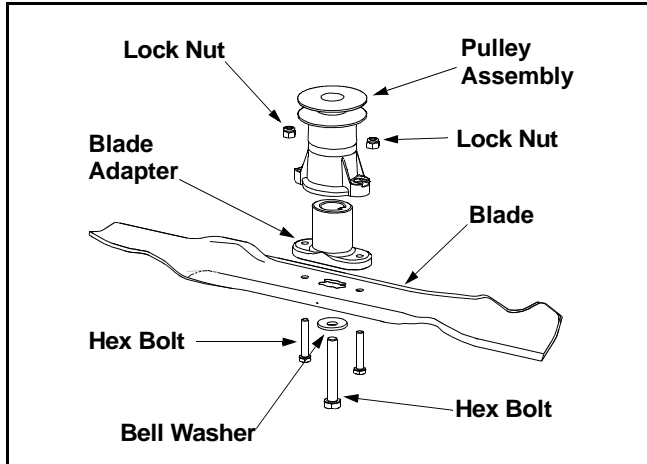


Figure 16

- Also lubricate the bolt holes, bolt and the inner surface of the nuts.
- Install the blade adapter on the pulley with the “star” away from the pulley. See Figure 16.
- Place the new blade on the blade adapter with the side marked bottom (or with part number) facing away from the adapter.
- Secure the blade to the assembly with two hex bolts and lock nuts. Tighten the hex bolts to the recommended torque. Refer to ‘Blade Mounting Torque’ section on this page.
- Install the blade assembly on the crankshaft. See Figure 16. Secure with the hex bolt and bell washer (cupped side of washer to blade) and tighten to the recommended torque. Refer to ‘Blade Mounting Torque’ section on this page.

IMPORTANT: The bolt, used to secure the blade to the engine, is specially heat-treated. **Do not substitute.** To order replacement bolt, refer to the parts list in the back of this manual.



WARNING: To ensure safe operation of your lawn mower, check all nuts and bolts periodically and tighten if necessary.

To Sharpen Blade:

- The blade can be sharpened with a file or on a grinding wheel. Do not attempt to sharpen the blade while it is still on the mower.

- Follow the original angle of grind as a guide. Make sure that each cutting edge receives an equal amount of grinding to prevent an unbalanced blade.

NOTE: An unbalanced blade will cause excessive vibration when rotating at high speeds, may cause damage to the mower and could break, causing personal injury.

- The blade can be tested by balancing it on a round shaft screwdriver. See Figure 17. Remove metal from the heavy side until it balances evenly. It is recommended that the blade always be removed from the adapter for the best test of balance.

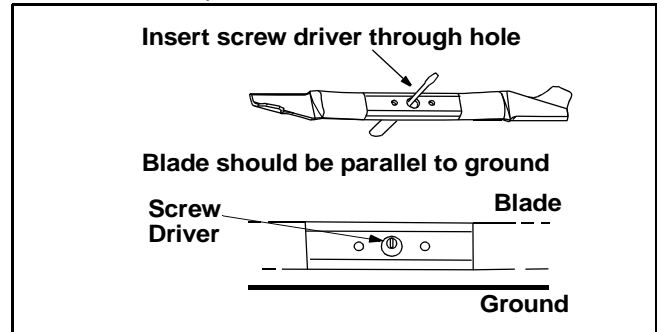


Figure 17

Blade Mounting Torque:

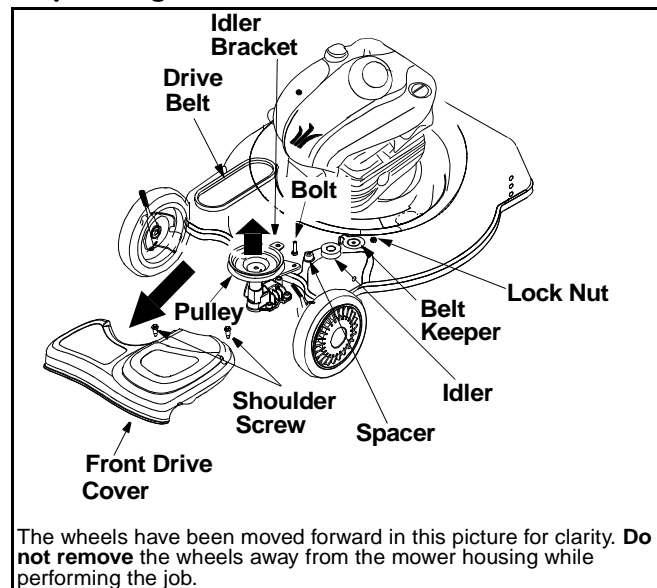
Blade adapter bolts: 120 in.lbs. minimum, 150 in.lbs. maximum.

Center bolt: 450 in.lbs. minimum, 600 in.lbs. maximum.



WARNING: Disconnect the spark plug wire and ground it against the engine to prevent unintended starting. Drain fuel into an approved container or place a piece of plastic film underneath the gas cap to prevent gasoline from leaking.

Replacing Drive Belt



The wheels have been moved forward in this picture for clarity. **Do not remove** the wheels away from the mower housing while performing the job.

Figure 18

- Remove the two shoulder screws which secure the front drive cover to the mower deck. See Figure 18.
- Remove the front drive cover from the unit by lightly pressing inward on the sides of the front drive cover. This will release the tabs that secure the front drive cover to the height adjuster brackets.
- Remove the idler and hardware from the idler bracket using 7/16" wrench and socket. See Figure 18.
- Remove the belt from the transmission pulley as shown in Figure 18.
- Lift and stabilize the front of the deck.
- Loosen the center hex bolt and lower the blade and engine pulley until there is adequate clearance to move the belt past the belt keeper.
- Remove the belt from the engine pulley and around the blade. See Figure 19.

- Reassemble in reverse order with new belt (part # 754-0465).

NOTE: Begin idler reassembly by inserting bolt up through the idler bracket hole. Adjust the drive clutch following instructions on page.

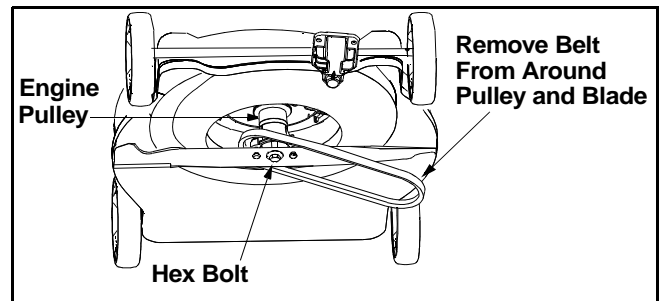


Figure 19

SECTION 9: OFF-SEASON STORAGE



WARNING: Be sure to disconnect the spark plug wire and DE-ENERGIZE starter before performing any repairs or maintenance. DO NOT attempt any maintenance or service to the engine and/or mower equipped with the safety key in the unlocked and/or energized mode.



WARNING: NEVER assume starter is de-energized, even if the key is in the locked position and/or removed from the engine. ALWAYS de-energize self starter prior to performing any maintenance or service to the engine and/or mower. Follow instructions on the engine and/or machine to de-energize starter.



WARNING: Never store the machine or fuel container indoors where there is an open flame, spark or pilot light such as on water heater, furnace, clothes dryer or other gas appliance.

The following steps should be taken to prepare lawn mower for storage.

- Clean and lubricate mower thoroughly as described in the lubrication instructions.

NOTE: We do not recommend the use of pressure washers or garden hose to clean your unit. They may cause damage to electric components, spindles, pulleys, bearings or the engine. The use of water will result in shortened life and reduce serviceability.

- Refer to engine manual for correct engine storage instructions.

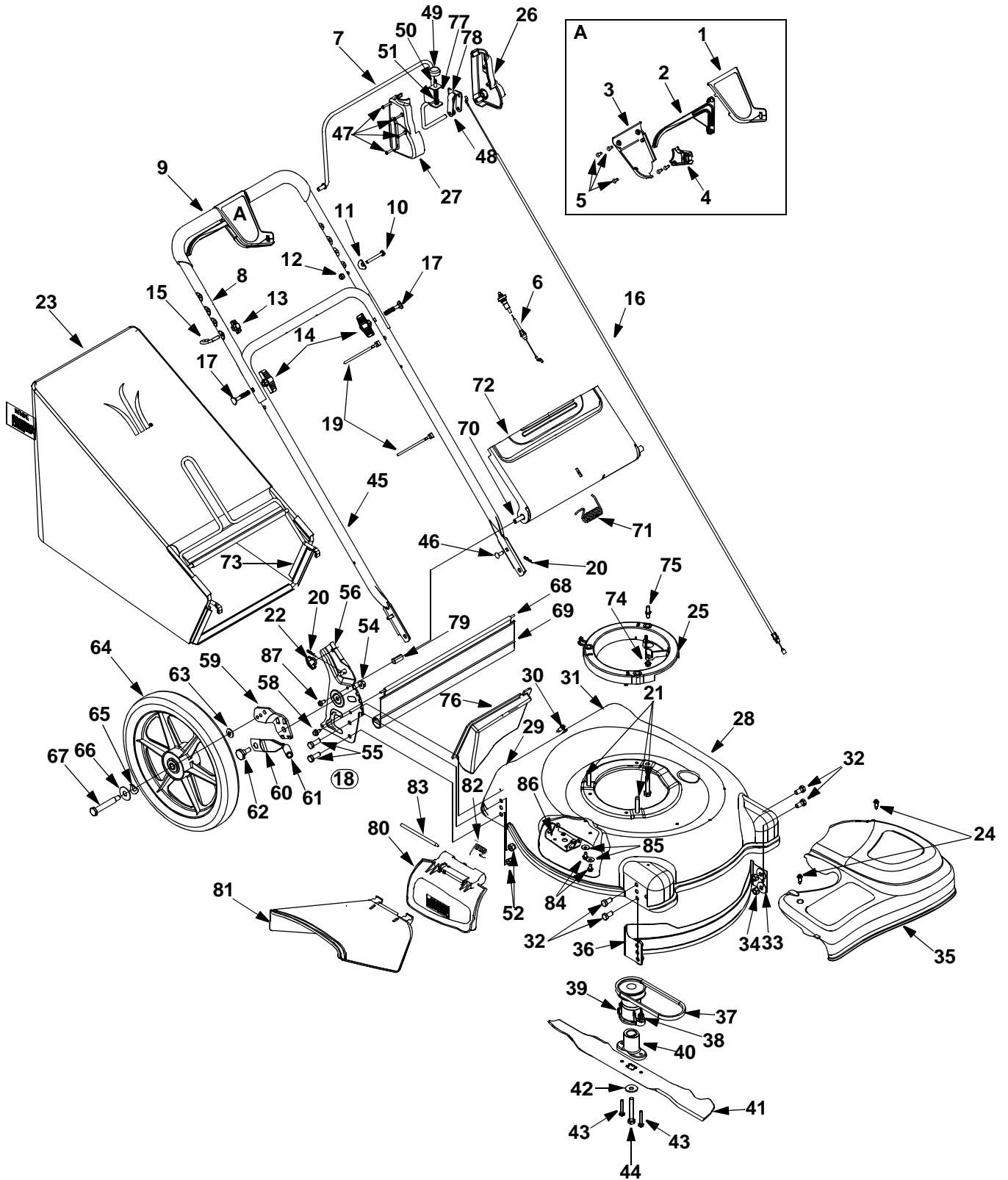
- Coat mower's cutting blade with chassis grease to prevent rusting.
- Store mower in a dry, clean area. Do not store next to corrosive materials, such as fertilizer.

NOTE: When storing any type of power equipment in an unventilated or metal storage shed, care should be taken to rust-proof the equipment. Using a light oil or silicone, coat the equipment, especially cables and all moving parts.

SECTION 10: TROUBLE SHOOTING GUIDE

Trouble	Possible Cause(s)	Corrective Action
Engine fails to start	Blade control handle disengaged. Start control button not depressed. Spark plug wire disconnected. Safety key not in run position. Fuel tank empty, or stale fuel. Blocked fuel line. Faulty spark plug. Engine flooded. Engine not primed. Self starter already de-energized.	Engage blade control handle. Depress starter control button. Connect wire to spark plug. Place safety key in run position. Fill tank with clean, fresh gasoline. Clean fuel line. Clean, adjust gap or replace. Wait a few minutes. Push primer bulb three times to prime engine. Use recoil starter to start engine
Engine runs erratic	Spark plug wire loose. Blocked fuel line or stale fuel. Vent in gas cap plugged. Water or dirt in fuel system. Dirty air cleaner. Carburetor out of adjustment.	Connect and tighten spark plug wire. Clean fuel line; fill tank with clean, fresh gasoline. Clear vent. Drain fuel tank. Refill with fresh fuel. Clean air cleaner. Adjust carburetor.
Engine overheats	Engine oil level low. Air flow restricted. Carburetor not adjusted properly.	Fill crankcase with proper oil. Remove blower housing and clean. Adjust carburetor.
Occasional skip (hesitates) at high speed	Spark plug gap too close.	Adjust gap to .030".
Idles poorly	Spark plug fouled, faulty or gap too wide. Carburetor improperly adjusted. Dirty air cleaner.	Reset gap to .030" or replace spark plug. Adjust carburetor. Clean air cleaner.
Excessive vibration	Cutting blade loose or unbalanced. Bent cutting blade.	Tighten blade and adapter. Balance blade. Replace blade.
Mower will not mulch grass	Wet grass. Excessively high grass. Dull blade.	Do not mow when grass is wet; wait until later to cut. Mow once at a high cutting height, then mow again at desired height or make a narrower cutting swath (1/2 width). Sharpen or replace blade.
Uneven cut	Wheels not positioned correctly. Dull blade.	Place all four wheels in same height position. Sharpen or replace blade.

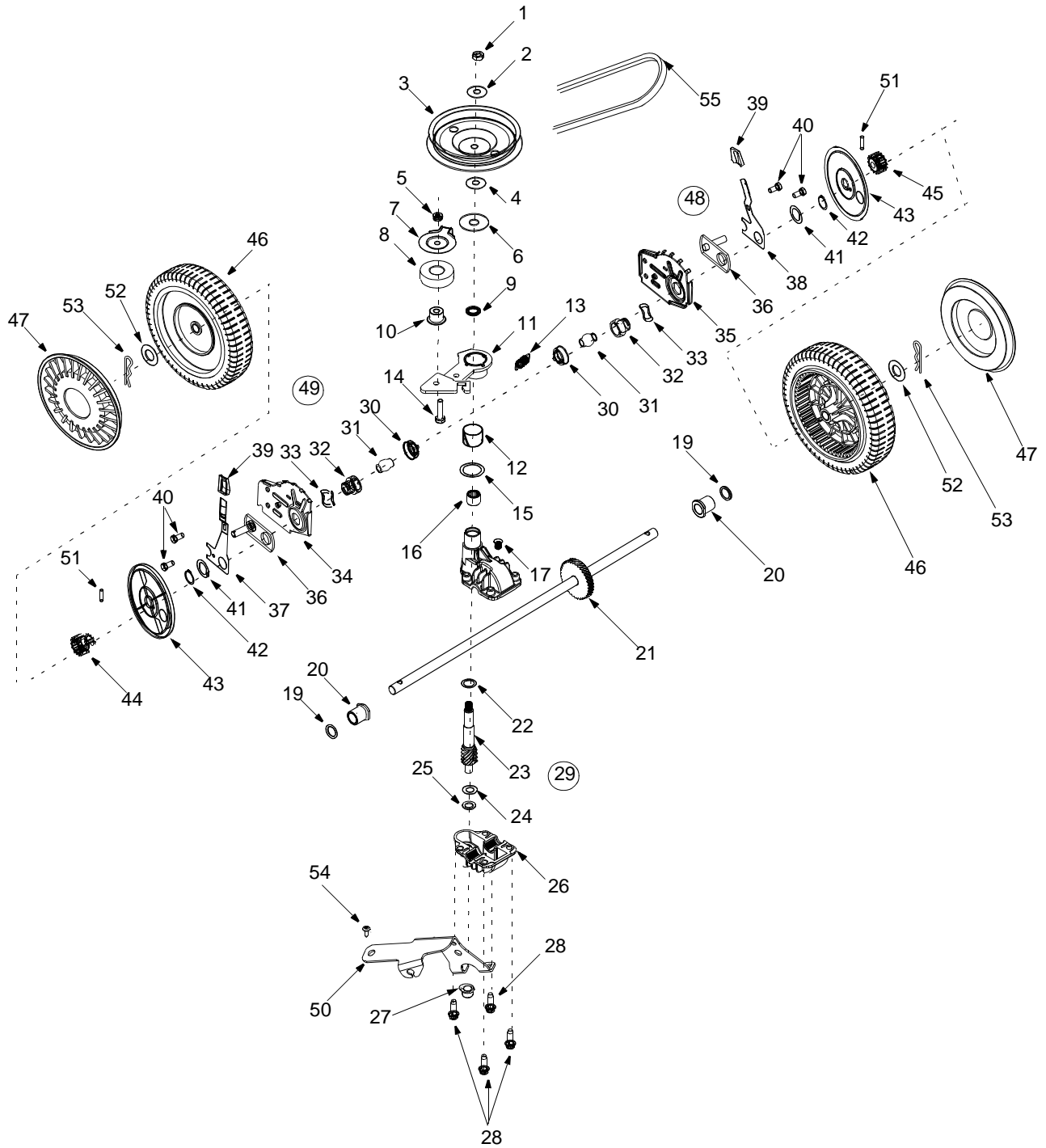
SECTION 11: ILLUSTRATED PARTS FOR MODEL 560 SERIES



Model 560 Series

Ref. No.	Part No.	Description	Ref. No.	Part No.	Description
1.	731-1057	Upper Drive Cover	45.	749-0907B	Lower Handle
2.	731-0620	Drive Lever	46.	710-0703	Carriage Bolt, 1/4-20 x .75"
3.	731-1058	Lower Drive Cover	47.	710-1256	Hi-low Screw
4.	731-1059	Mounting Cap	48.	782-0156	Lever
5.	710-1667A	Screw # 10-16 x .75	49.	720-0428	Button
6.	746-0960	Drive Cable	50.	715-0168	Pin
7.	647-0058	Control Bail Lever	51.	732-1171	Compression Spring
8.	749-1405	Upper Handle (Incl. Ref. No. 9)	52.	712-0798	Hex Nut 3/8-16
9.	720-0294	Foam Grip, 9"	54.	712-3005	Hex Flange Lock Nut 3/8-16
10.	710-0501	Hex Hd. Cap Screw 1/4-20	55.	710-0514	Hex Scr. w/Washer 1/4-20
11.	736-0451	Saddle Washer	56.	682-3056A	RH Handle Bracket
12.	712-0324	Hex Lock Nut 1/4-20		682-3057A	LH Handle Bracket (Not Shown)
13.	720-0279	Handle Knob	58.	710-0896	Hex Screw TT 1/4-14
14.	720-0314	Handle Knob	59.	17488A	RH Pivot Bar
15.	710-1205	Eye Bolt		17489A	LH Pivot Bar (Not Shown)
16.	746-1141	Control Cable, 58.25"	60.	732-0866	Height Adj. Lever
17.	710-1174	Carriage Bolt 5/16-18 x 2.0	61.	720-0312	Foam Grip
18.	682-3058	RH Bracket Ass'y	62.	738-0507B	Shoulder Scr .500 Dia. x .434
	682-3059	LH Bracket Ass'y (Not Shown)	63.	736-0105	Washer .401 x .870 x .063
19.	726-0240	Cable Tie	64.	734-1860	Wheel, 14 x 2
20.	714-0104	Cotter Pin	65.	736-0182	Spring Washer .50 I.D. x 1.0 O.D.
21.	710-1008	Self-Tapping Screw	66.	736-0456	Flat Washer .510 x 1.373 x .04
22.	712-0397	Wing Knob	67.	738-0481A	Shoulder Screw
23.	664-0085	Grass Bag	68.	732-0700	Wire
24.	710-1650	Shoulder Screw	69.	731-1236	Rear Trailing Shield
25.	631-0075B	Engine Spacer	70.	747-0996	Pivot Rod
26.	731-2532	Control Cover LH	71.	732-0809	Torsion Spring
27.	731-2533	Control Cover RH	72.	782-7599A	Rear Discharge Door
28.	782-0082A	21" Deck	73.	747-0995A	Grasscatcher Frame
29.	782-5004	RH Rear Baffle	74.	712-0271	Hex Nut
30.	710-1017	Screw AB: 1/4-14: .625	75.	711-1293	Screw
31.	782-5003	LH Rear Baffle	76.	782-5007A	Plastic Mulching Baffle
32.	710-0216	Hex Screw 3/8-16 x .75	77.	716-0209	Retaining Ring
33.	736-0331	Bell Washer .39 x 1.13 x .062	78.	732-1172	Torsion Spring
34.	712-0798	Hex Nut 3/8-16	79.	750-0434	Spacer
35.	731-1937A	Transmission Cover	80.	682-7000	Mulching Plug (Hinged)
36.	782-5002	Front Baffle	81.	731-1409	Chute Deflector
37.	754-0465	V-Belt, 3/8 x 35.68"	82.	732-0731	Torsion Spring
38.	712-0324	Hex Nut 1/4-20	83.	747-0710	Hinge Pin
39.	756-1146A	Drive Pulley	84.	710-0599	Tapp Scr. 1/4-20 x .500
40.	748-0411	Blade Adapter	85.	736-0270	Bell Washer .265 x .75 x .062
41.	742-0741	21" Mulching Blade	86.	782-7006	Hinged Mtg. Bracket
42.	736-0452	Flat Washer .516 x 1.5 x .134	87.	710-0286	Bolt
43.	710-0606	Hex Screw 1/4-20 x 1.50			
44.	710-1257	Hex Screw 3/8-24 x 2.50			

Model 560 Series



Model 560 Series

Ref. No	Part No.	Description	Ref. No	Part No.	Description
1.	712-3025	Hex Jam Nut 5/16-24	29.	618-0606	Transmission Assembly (Includes Ref. # 1to Ref. #30)
2.	736-0425	Bell Washer .325 x .930 x .045	30.	732-0708	Bearing Retainer
3.	756-1042	Pulley, 3.82 x .313 x .68	31.	741-0604	Bearing Sleeve .50 I.D.
4.	736-0425	Bell Washer .325 x .930 x .045	32.	748-0355	Bearing Support
5.	712-0896	Lock Nut 1/4-28	33.	736-0447	Wave Washer 1.5 x 1.0 x .029
6.	736-0406	Flat Washer .442 x 1.38 x .060	34.	782-0512B	RH Height Adj. Plate
7.	782-7598	Belt Keeper	35.	782-0511A	LH Height Adj. Plate
8.	741-0124	Ball Bearing	36.	682-0509	Pivot Plate Assembly
9.	721-0457	Oil Seal	37.	732-0706	RH Front Lever
10.	750-1050	Flange Spacer	38.	732-0707	LH Front Lever
11.	682-0028	Idler Bracket Assembly	39.	720-0190	Knob
12.	741-0682A	Bearing Sleeve	40.	710-0216	Hex Cap Screw 3/8-16 x .75
13.	732-0849A	Extension Spring	41.	736-0474	Washer DD 1.5" O.D.
14.	710-0299	Hex Cap Screw 1/4-28 x 1.00	42.	716-0102	Snap Ring 1.0 dia.
15.	736-0570	Flat Washer .865 x 1.145 x .030	43.	782-7551	Wheel Dust Cap
16.	741-0699	Needle Bearing .438 x .625 x .500	44.	717-1534	Gear 14T RH FWD
17.	721-0325	Plug 1/4 x .437	45.	717-1533	Gear 14T LH FWD
18.	618-0300A	Upper Housing	46.	734-1983A	Wheel, 8x2 Black
19.	721-0329	Oil Seal .500 x .687 x .094	47.	731-1426	Hubcap: Yellow
20.	741-0673	Flange Bearing	48.	682-0512A	RH Height Adj. Complete
21.	611-0105A	Output Shaft	49.	682-0511A	LH Height Adj. Complete
22.	736-0520	Flat Washer .504 x .700 x .030	50.	682-0030	Cable Idler Bracket
23.	717-1492	Pinion Shaft 10T	51.	715-0221	Dowel Pin
24.	736-0314	Thrust Washer .375 x .70 x .030	52.	736-3013	Flat Washer 1/2 x 1.00 x .063
25.	736-0569	Thrust Washer .388 x .625 x .062	53.	714-0101	Cotter Pin .08 x 1.42
26.	618-0299A	Lower Housing	54.	738-1002	Screw
27.	741-0672	Flange Bearing .378 x .531 x .370	55.	754-0465	Belt
28.	710-1276	Hex Screw w/Washer 1/4-20 x .750			

MANUFACTURER'S LIMITED WARRANTY FOR:



The limited warranty set forth below is given by MTD PRODUCTS INC ("MTD") with respect to new merchandise purchased and used in the United States, its possessions and territories.

MTD warrants this product against defects in material and workmanship for a period of two (2) years commencing on the date of original purchase and will, at its option, repair or replace, free of charge, any part found to be defective in material or workmanship. This limited warranty shall only apply if this product has been operated and maintained in accordance with the Operator's Manual furnished with the product, and has not been subject to misuse, abuse, commercial use, neglect, accident, improper maintenance, alteration, vandalism, theft, fire, water or damage because of other peril or natural disaster. Damage resulting from the installation or use of any accessory or attachment not approved by MTD Products Inc. for use with the product(s) covered by this manual will void your warranty as to any resulting damages.

Normal wear parts or components thereof are subject to separate terms as follows: All normal wear part or component failures will be covered on the product for a period of 90 days regardless of cause. After 90 days, but within the two year period, normal wear part failures will be covered ONLY IF caused by defects in material or workmanship of OTHER component parts. Normal wear parts and components include, but are not limited to, belts, blades, blade adapters, grass bags, rider deck wheels, seats, snow thrower skid shoes, shave plates and tires. Batteries are covered by a 90-day limited replacement warranty.

HOW TO OBTAIN SERVICE: Warranty service is available, WITH PROOF OF PURCHASE THROUGH YOUR LOCAL AUTHORIZED SERVICE DEALER. To locate the dealer in your area, please check for a listing in the Yellow Pages or contact the Customer Service Department of MTD PRODUCTS INC by calling 1-800-800-7310 or writing to P.O. Box 368022, Cleveland, Ohio 44136-9722.

This limited warranty does not provide coverage in the following cases:

- a. The engine or component parts thereof. These items carry a separate manufacturer's warranty. Please refer to the applicable manufacturer's warranty on these items.
- b. Log splitter pumps, valves and cylinders have a separate one year warranty.

c. Routine maintenance items such as lubricants, filters, blade sharpening and tune-ups, or adjustments such as brake adjustments, clutch adjustments or deck adjustments; and normal deterioration of the exterior finish due to use or exposure.

d. MTD does not extend any warranty for products sold or exported outside of the United States of America, its possessions and territories, except those sold through MTD's authorized channels of export distribution.

No implied warranty, including any implied warranty of merchantability or fitness for a particular purpose, applies after the applicable period of express written warranty above as to the parts as identified. No other express warranty or guaranty, whether written or oral, except as mentioned above, given by any person or entity, including a dealer or retailer, with respect to any product shall bind MTD. During the period of the Warranty, the exclusive remedy is repair or replacement of the product as set forth above. (Some states do not allow limitations on how long an implied warranty lasts, so the above limitation may not apply to you.)

The provisions as set forth in this Warranty provide the sole and exclusive remedy arising from the sales. MTD shall not be liable for incidental or consequential loss or damages including, without limitation, expenses incurred for substitute or replacement lawn care services, for transportation or for related expenses, or for rental expenses to temporarily replace a warranted product. (Some states do not allow the exclusion or limitation of incidental or consequential damages, so the above exclusion or limitation may not apply to you.)

In no event shall recovery of any kind be greater than the amount of the purchase price of the product sold. Alteration of the safety features of the product shall void this Warranty. You assume the risk and liability for loss, damage, or injury to you and your property and/or to others and their property arising out of the use or misuse or inability to use the product.

This limited warranty shall not extend to anyone other than the original purchaser, original lessee or the person for whom it was purchased as a gift.

How State Law Relates to this Warranty: This limited warranty gives you specific legal rights, and you may also have other rights which vary from state to state.