

FAST START

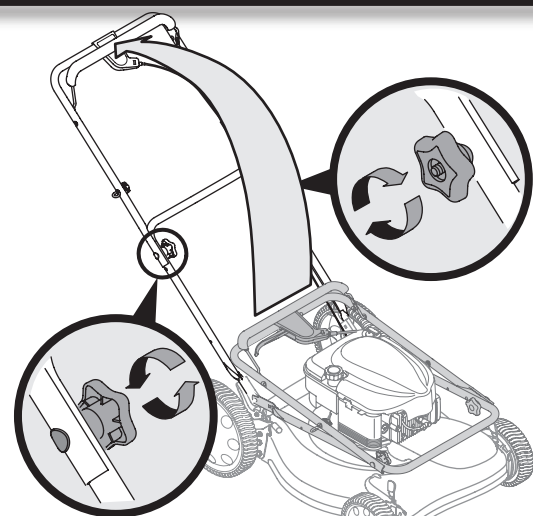
GUIDE

FAST START

GUIDE

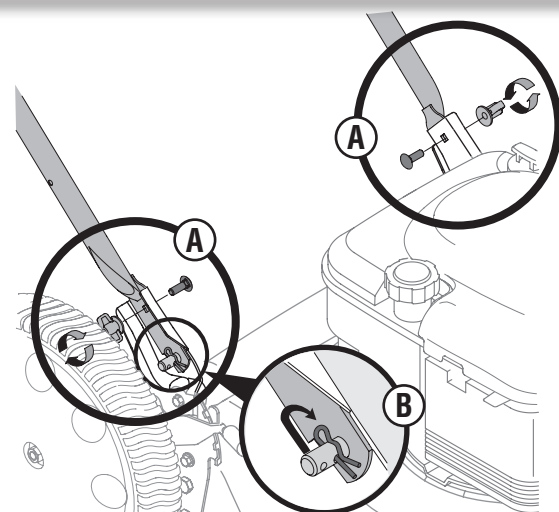
Read and understand all instruction, warning and danger labels.

Lea el manual de operación anexo sobre ensamblaje e inicio.



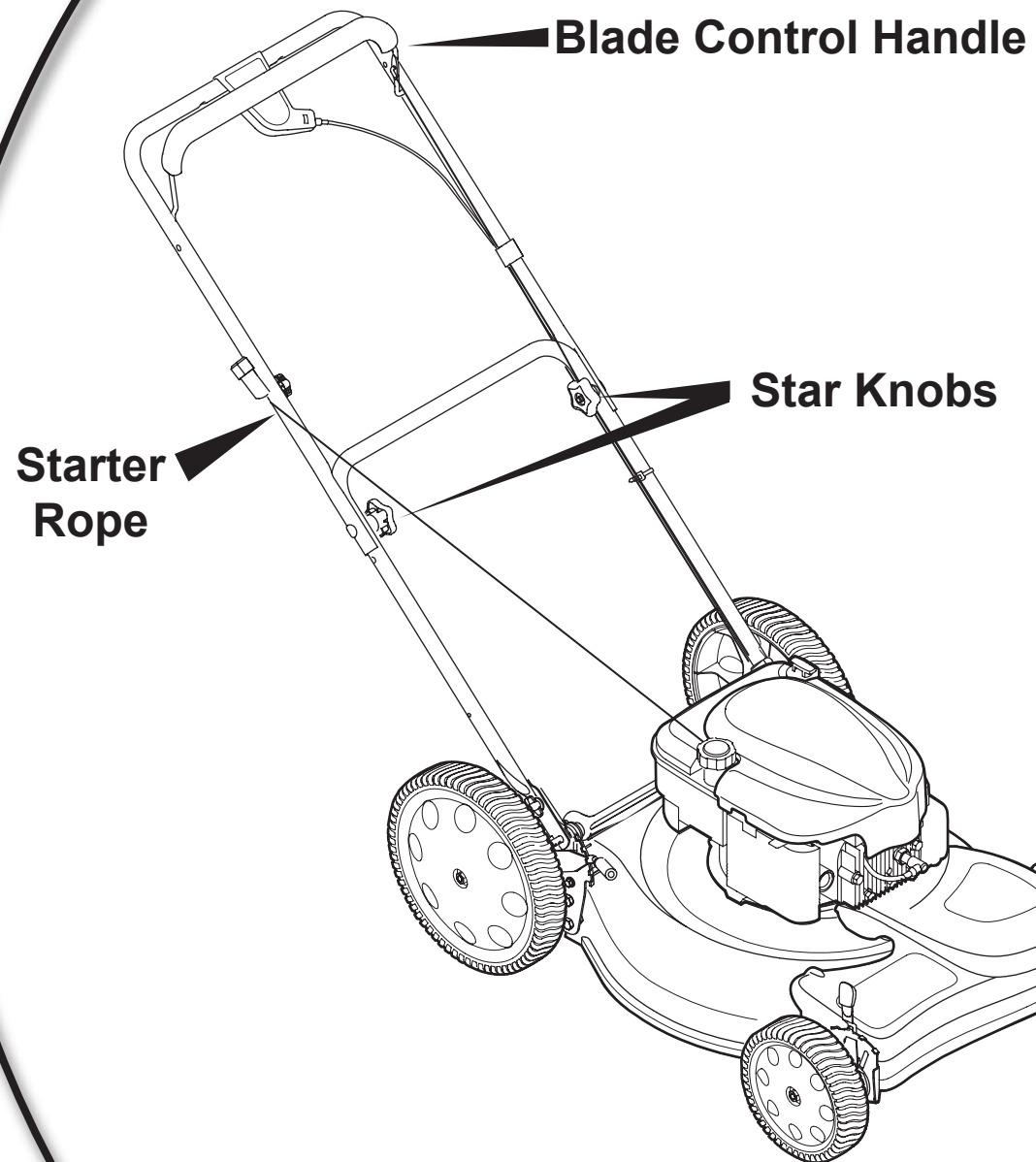
Lift handle to extended position.
Tighten star knobs.

1

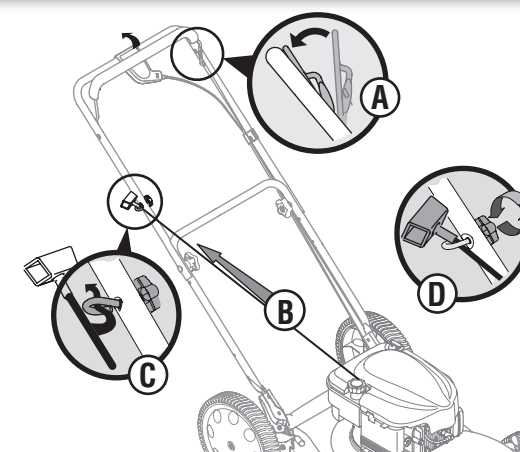


Insert carriage bolt and tighten with wing nuts.
Move hairpin clip to inside hole.

2

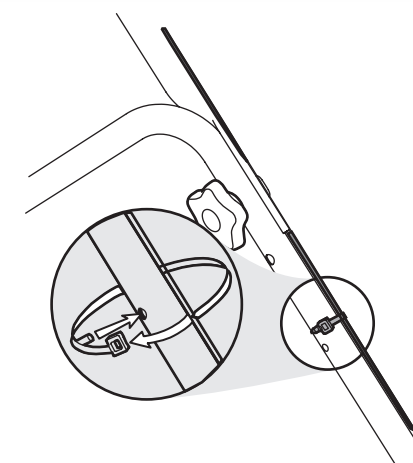


3



Hold blade control handle against upper handle.
Slowly slip starter rope into rope guide.
Tighten rope guide wing knob.

4



Secure cable to lower handle with
cable tie provided with unit.



IMPORTANT: READ OPERATOR'S MANUAL THOROUGHLY AND FOLLOW THE SAFE OPERATION PRACTICES BEFORE OPERATING .



FAST START

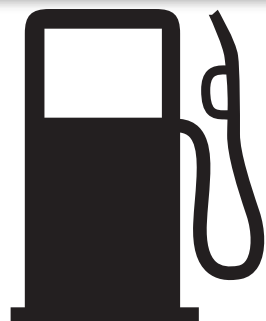
GUIDE

FAST START

GUIDE

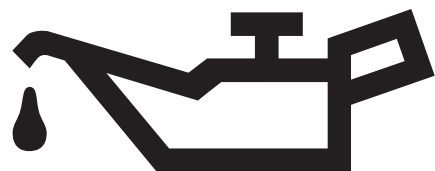
Read and understand all instruction, warning and danger labels.

Lea el manual de operación anexo sobre ensamblaje e inicio.



5

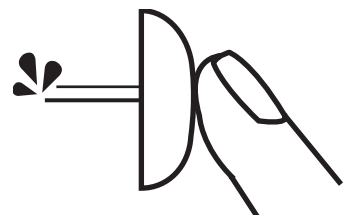
Fill tank with gas to within 1/2 inch of top of tank.



6

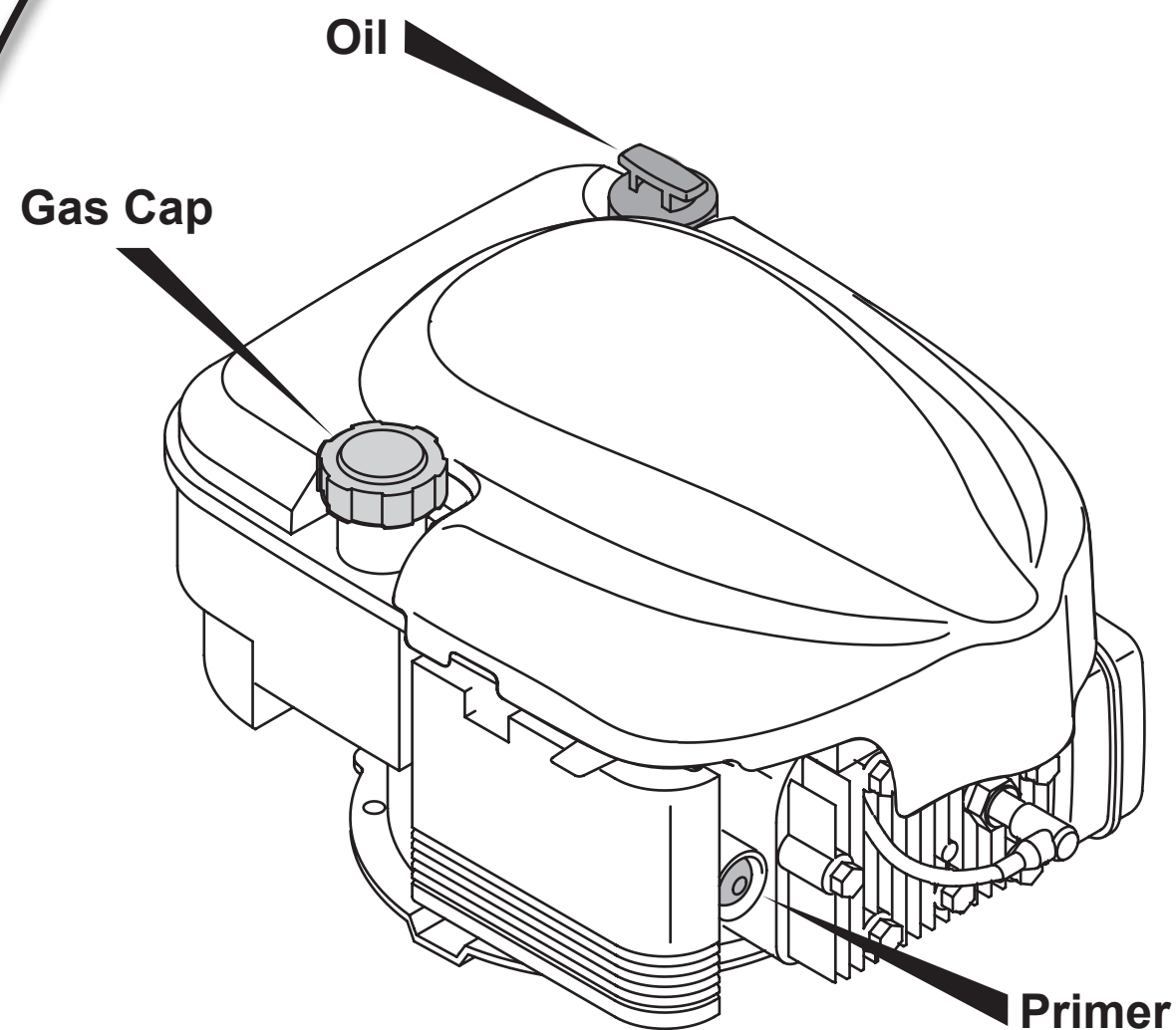
Fill engine with entire contents of oil bottle supplied with your mower.

5x



7

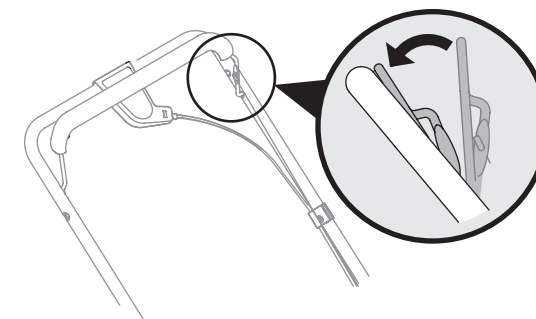
Push primer five times.



Need Help?

Call 1-888-TO-HELP-U
(1-888-864-3578)

8



Depress blade control handle and hold.



9

Pull starter rope with quick, full arm stroke.
If engine does not start after five pulls,
repeat steps seven thru nine.



IMPORTANT: READ OPERATOR'S MANUAL THOROUGHLY AND FOLLOW THE SAFE OPERATION PRACTICES BEFORE OPERATING .

