

FAST START

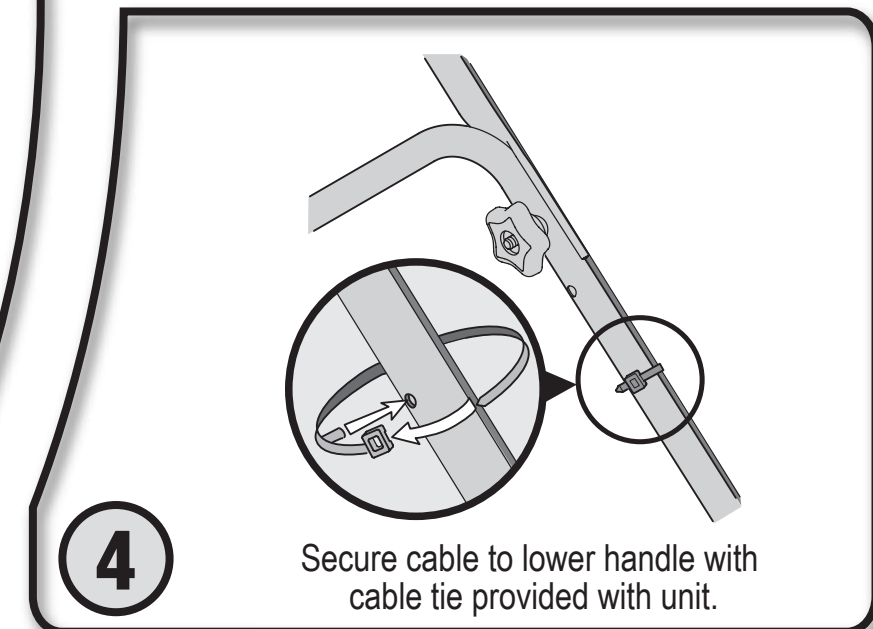
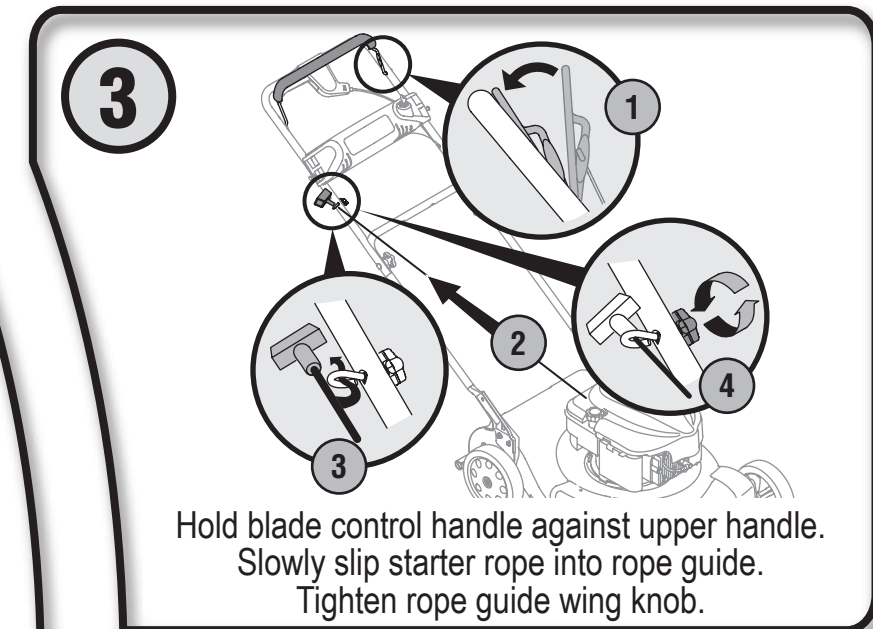
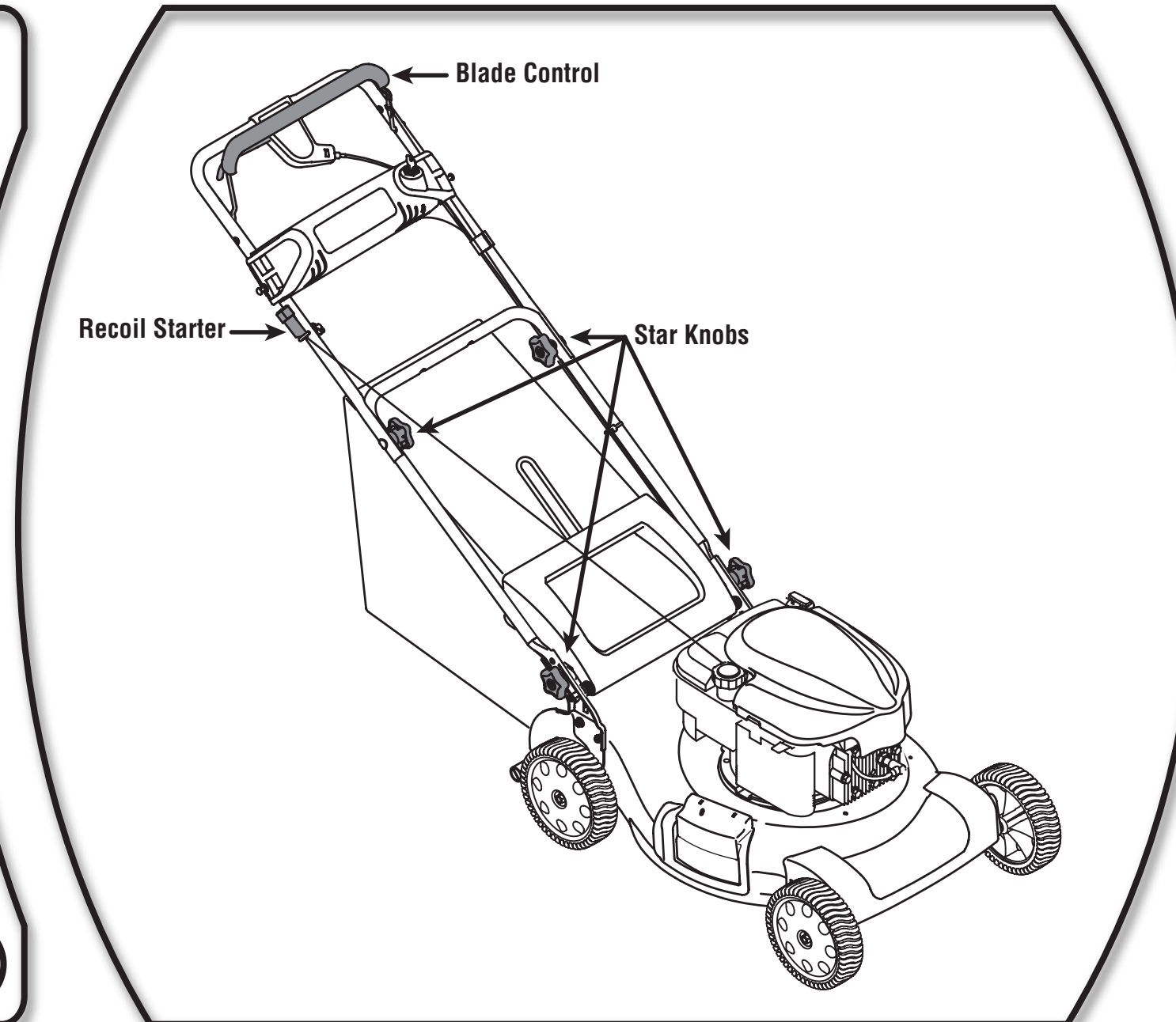
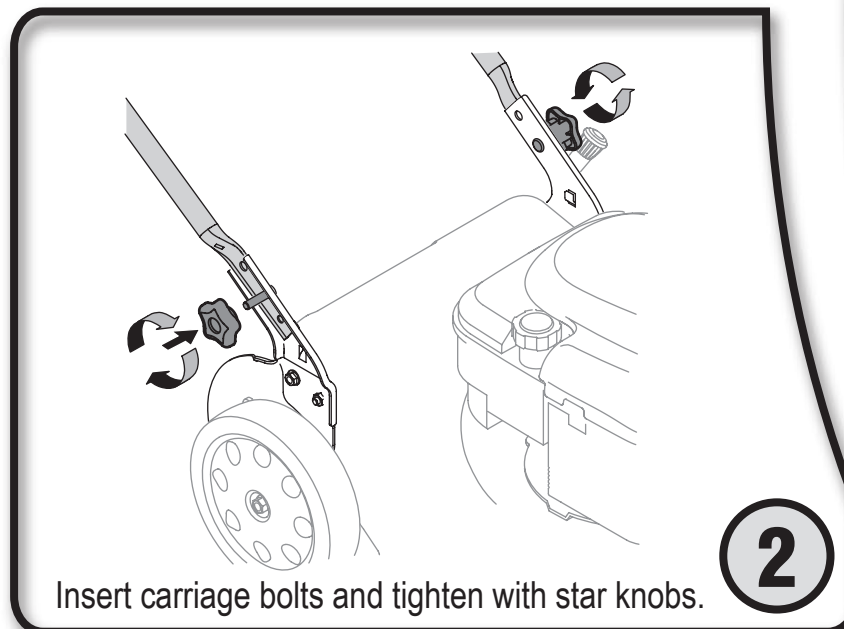
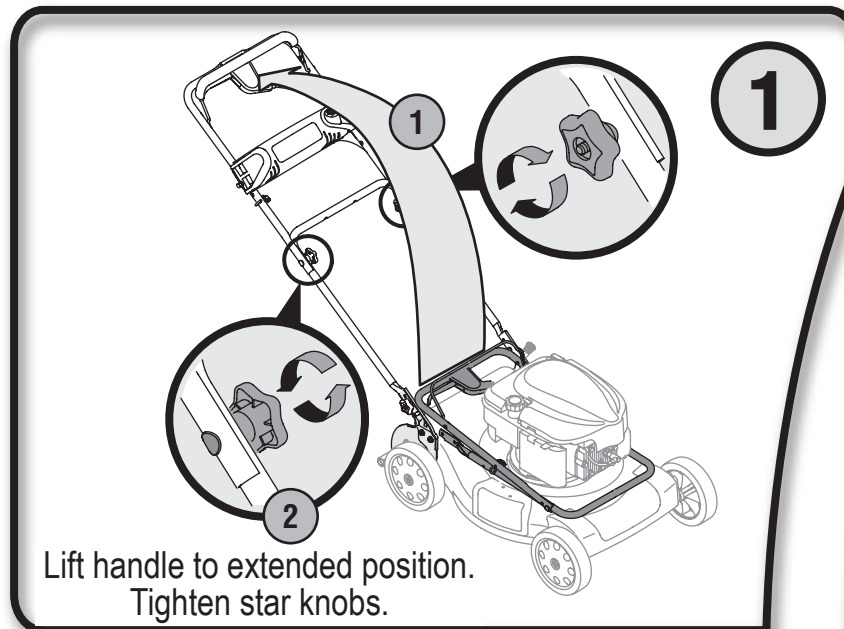
GUIDE

FAST START

GUIDE

Read and understand all instruction, warning and danger labels.

Lea el manual de operación anexo sobre ensamblaje e inicio.



IMPORTANT: READ OPERATOR'S MANUAL THOROUGHLY AND FOLLOW THE SAFE OPERATION PRACTICES BEFORE OPERATING .



FAST START

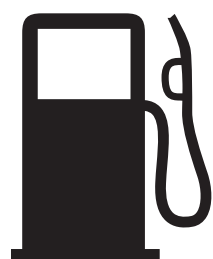
GUIDE

FAST START

GUIDE

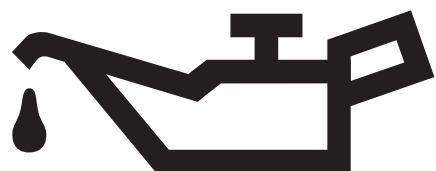
Read and understand all instruction, warning and danger labels.

Lea el manual de operación anexo sobre ensamblaje e inicio.



5

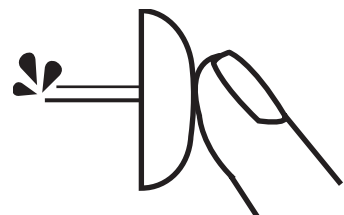
Fill tank with gas to within 1/2 inch of top of tank.



6

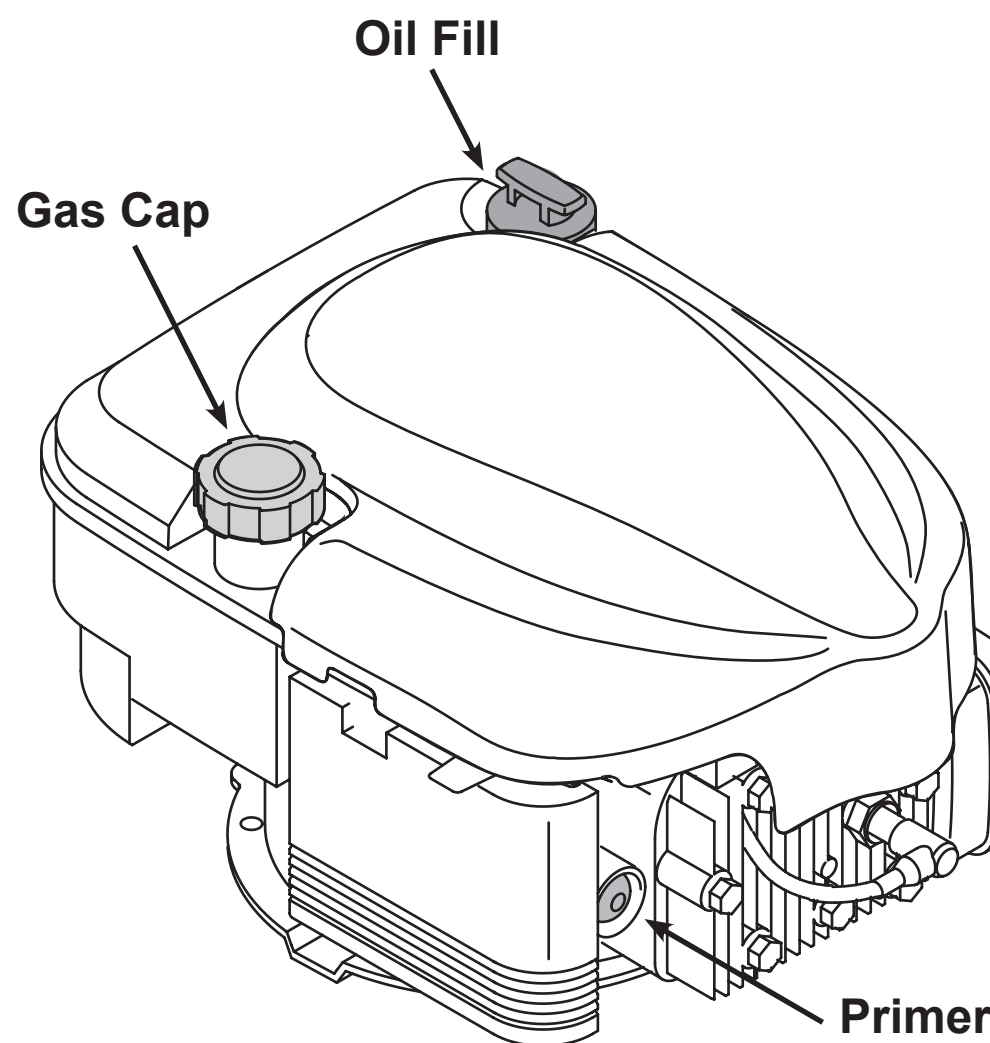
Fill engine with entire contents of oil bottle supplied with your mower.

5x



7

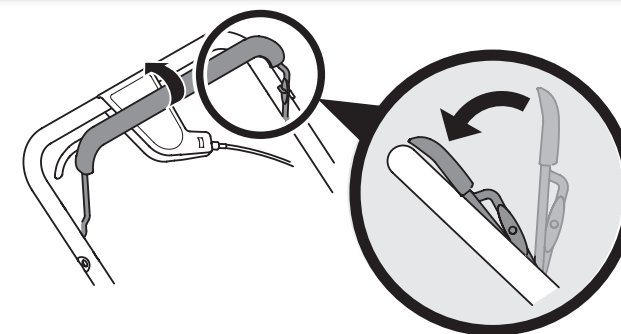
Push primer five times.



Need Help?

Call 1-888-TO-HELP-U
(1-888-864-3578)

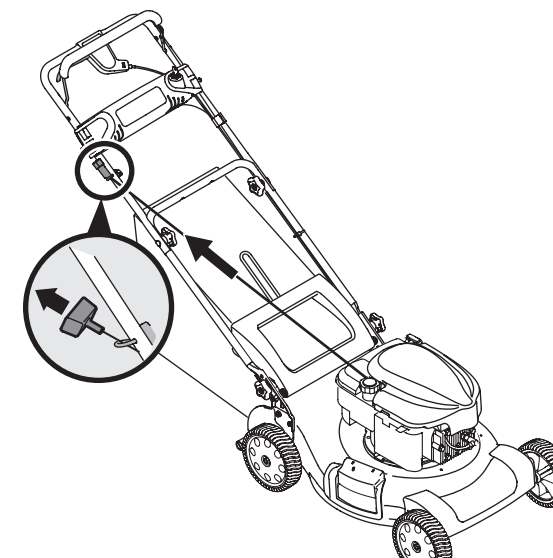
8



Depress blade control handle and hold.

Electric start battery must be charged for 8-12 hours before initial use. See Operator Manual maintenance section.

NOTE: If wanting to use the grass catcher, first remove the mulching baffle. See Setup Section in Operator's Manual.



9

Pull starter rope with quick, full arm stroke. If engine does not start after five pulls, repeat steps seven thru nine.



IMPORTANT: READ OPERATOR'S MANUAL THOROUGHLY AND FOLLOW THE SAFE OPERATION PRACTICES BEFORE OPERATING .

