

FAST START

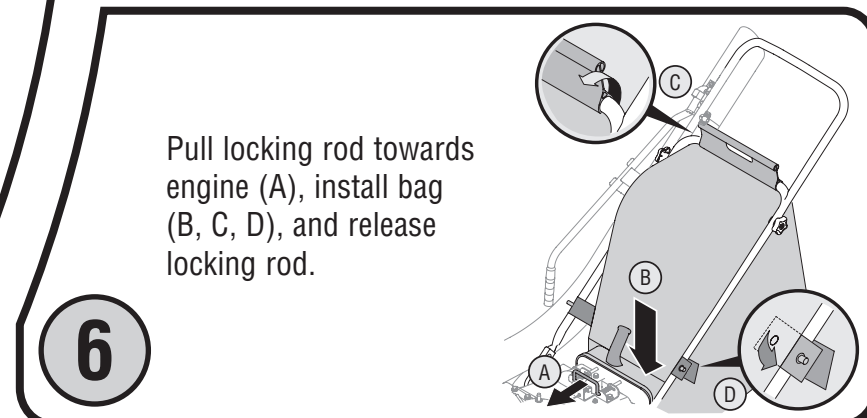
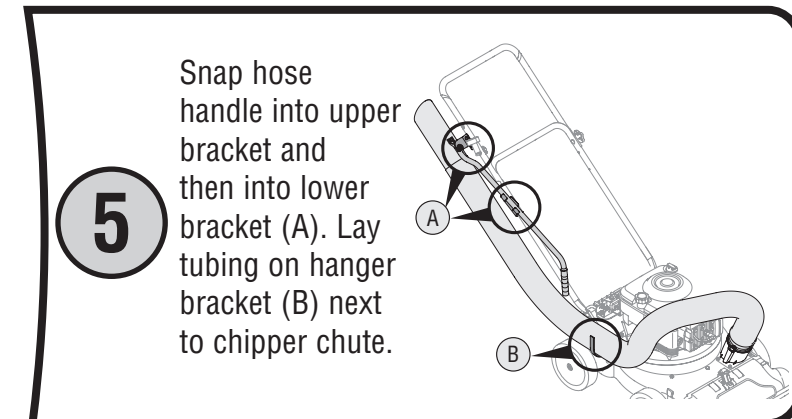
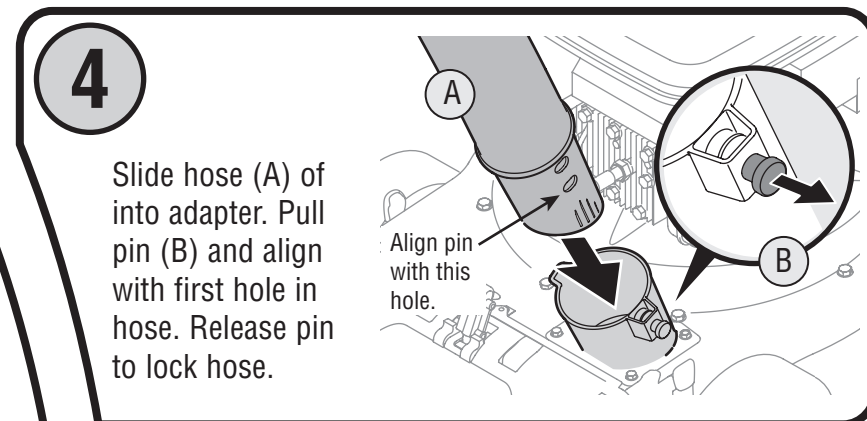
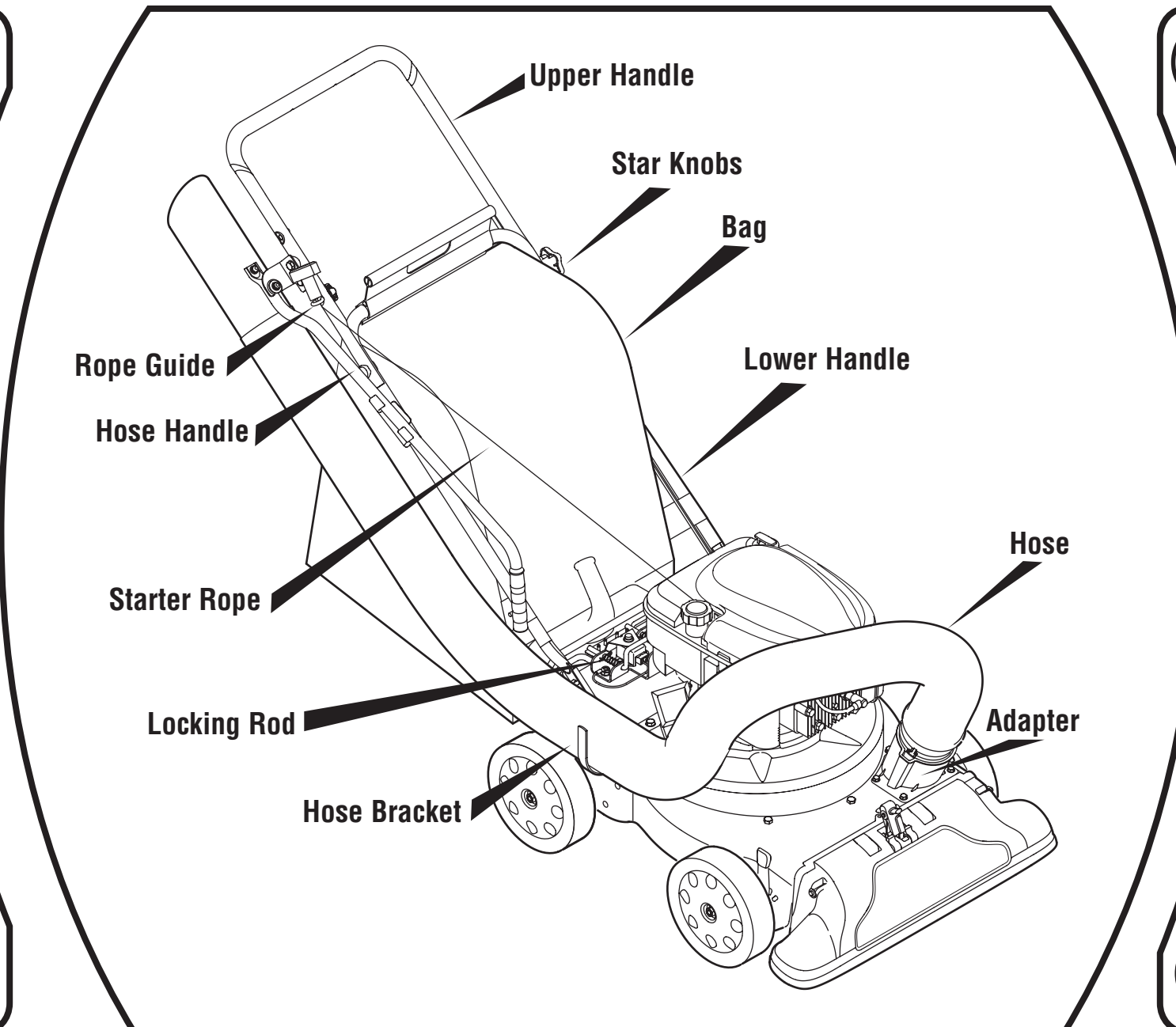
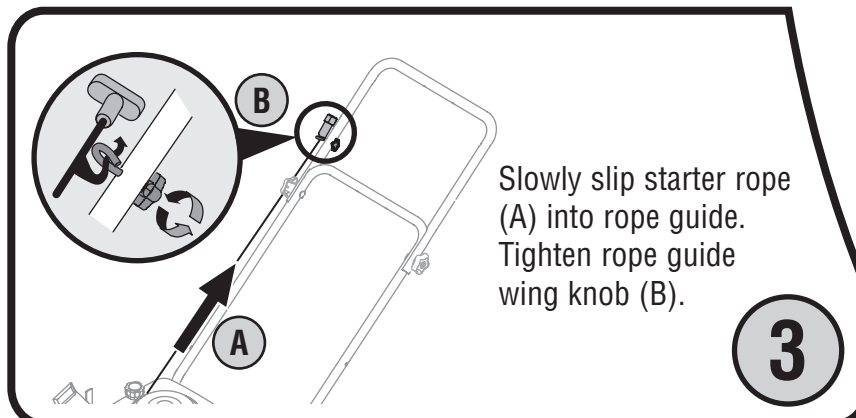
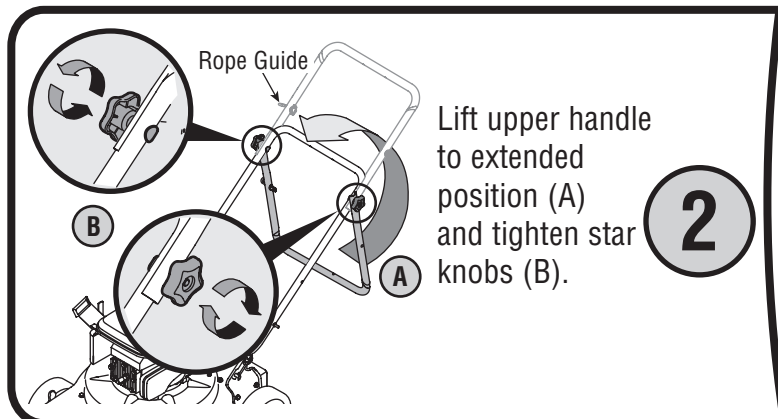
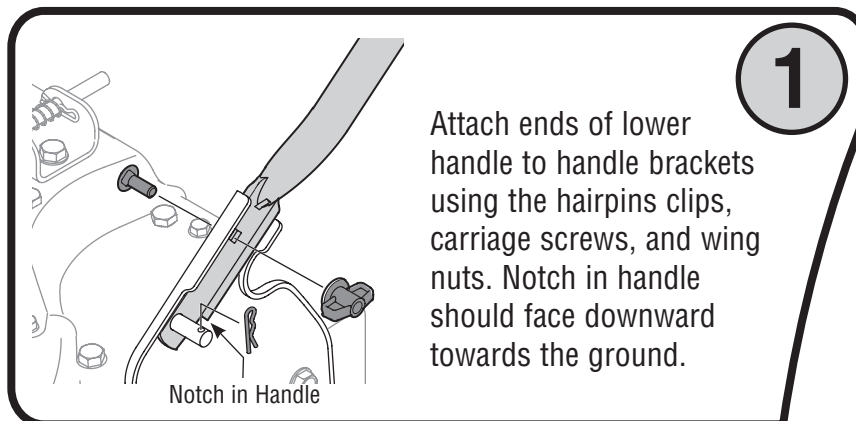
GUIDE

FAST START

GUIDE

Read and understand all instruction, warning, and danger labels.

Lea el manual de operación anexo sobre ensamblaje e inicio.



IMPORTANT: READ OPERATOR'S MANUAL AND ENGINE MANUAL THOROUGHLY AND FOLLOW THE SAFE OPERATION PRACTICES BEFORE OPERATING .



FAST START

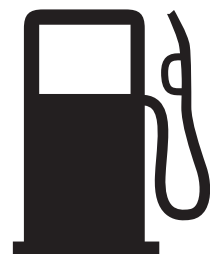
GUIDE

FAST START

GUIDE

Read and understand all instruction, warning, and danger labels.

Lea el manual de operación anexo sobre ensamblaje e inicio.



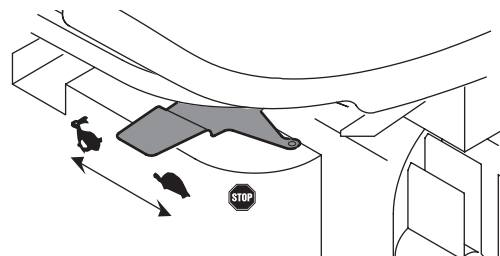
7

Fill tank with gas to within 1/2 inch of top of tank.



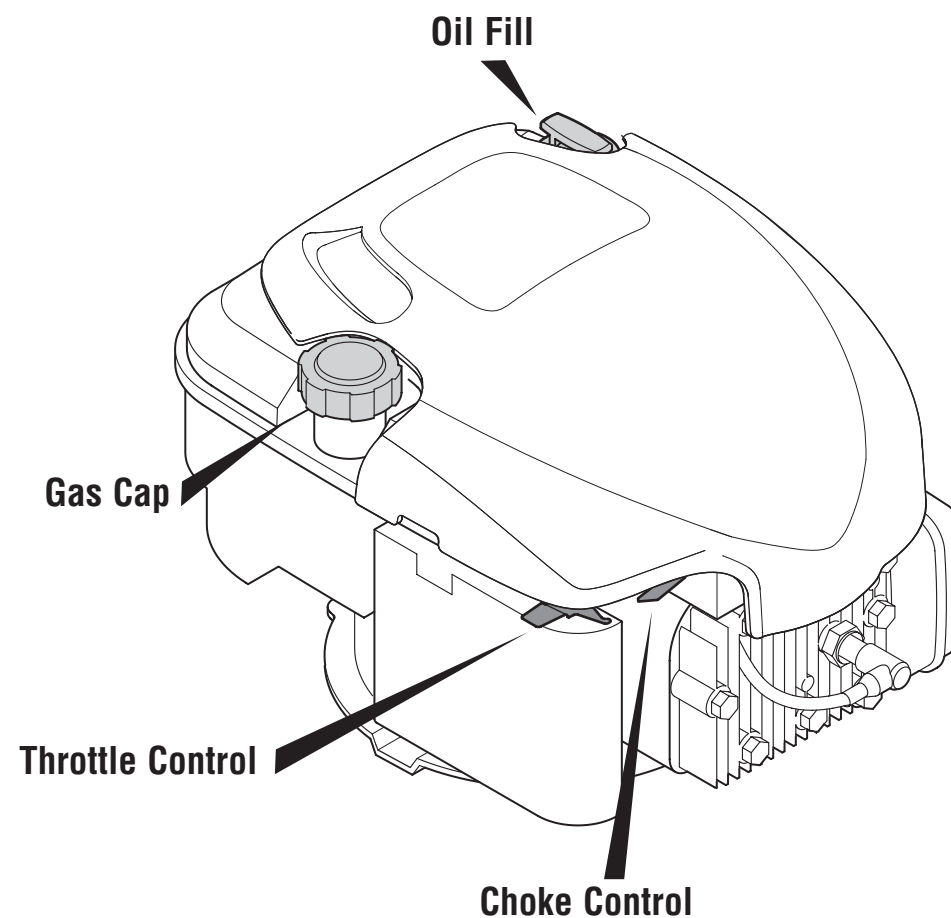
8

Fill engine with entire contents of oil bottle.



9

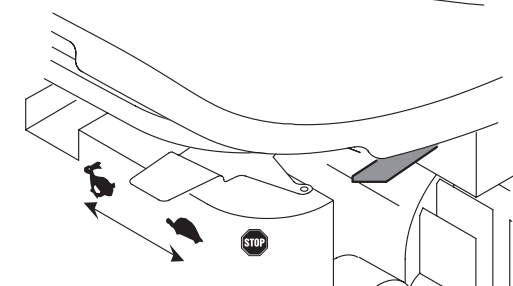
Move throttle on engine to START/RUN position.



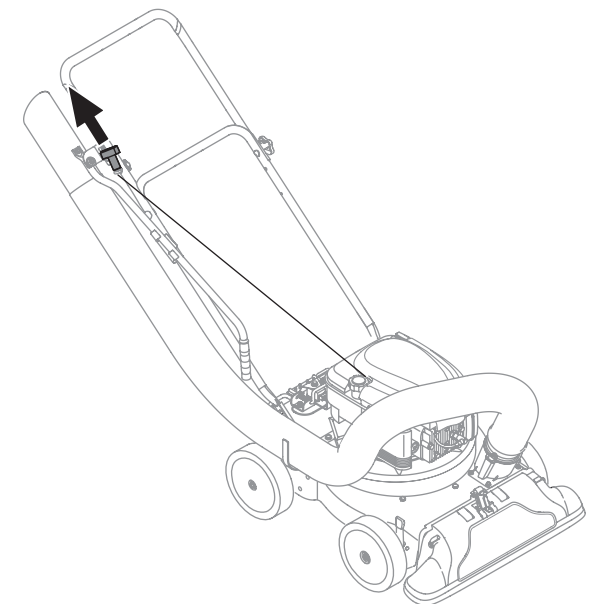
Need Help?

Call 1-800-800-7310

10



Move choke control toward the throttle control to choke the engine.



11

Pull starter rope with quick, full armstroke. When engine starts, slowly move choke to off position (away from throttle). If engine does not start after ten seconds of repeated pulls, wait a few minutes and repeat this step.



IMPORTANT: READ OPERATOR'S MANUAL AND ENGINE MANUAL THOROUGHLY AND FOLLOW THE SAFE OPERATION PRACTICES BEFORE OPERATING .

