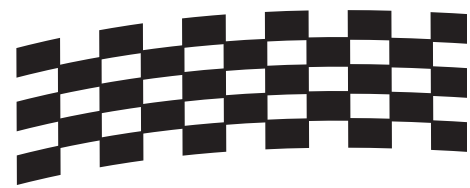
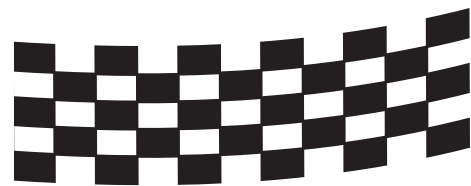


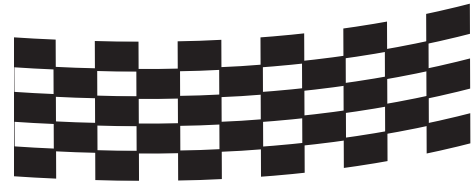
FAST START

GUIDE



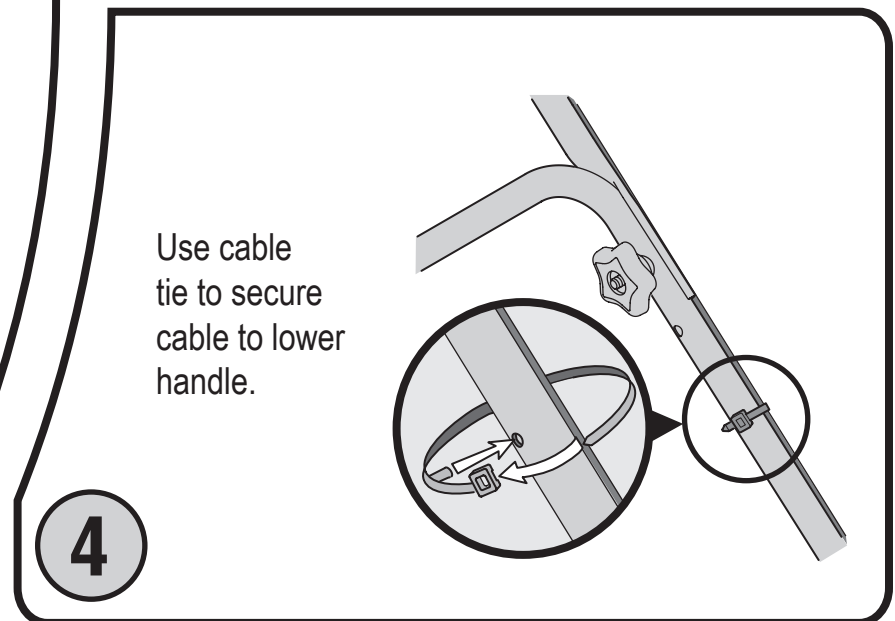
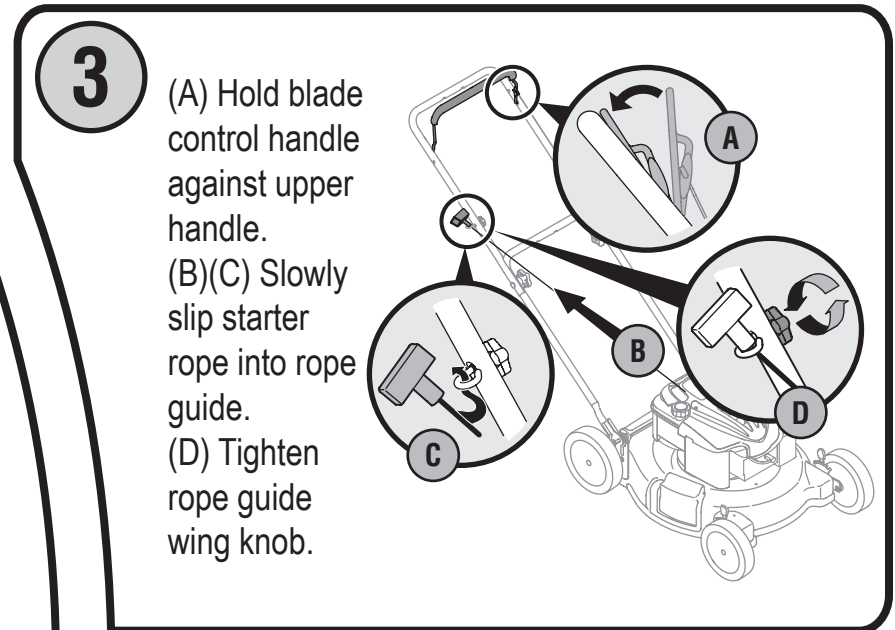
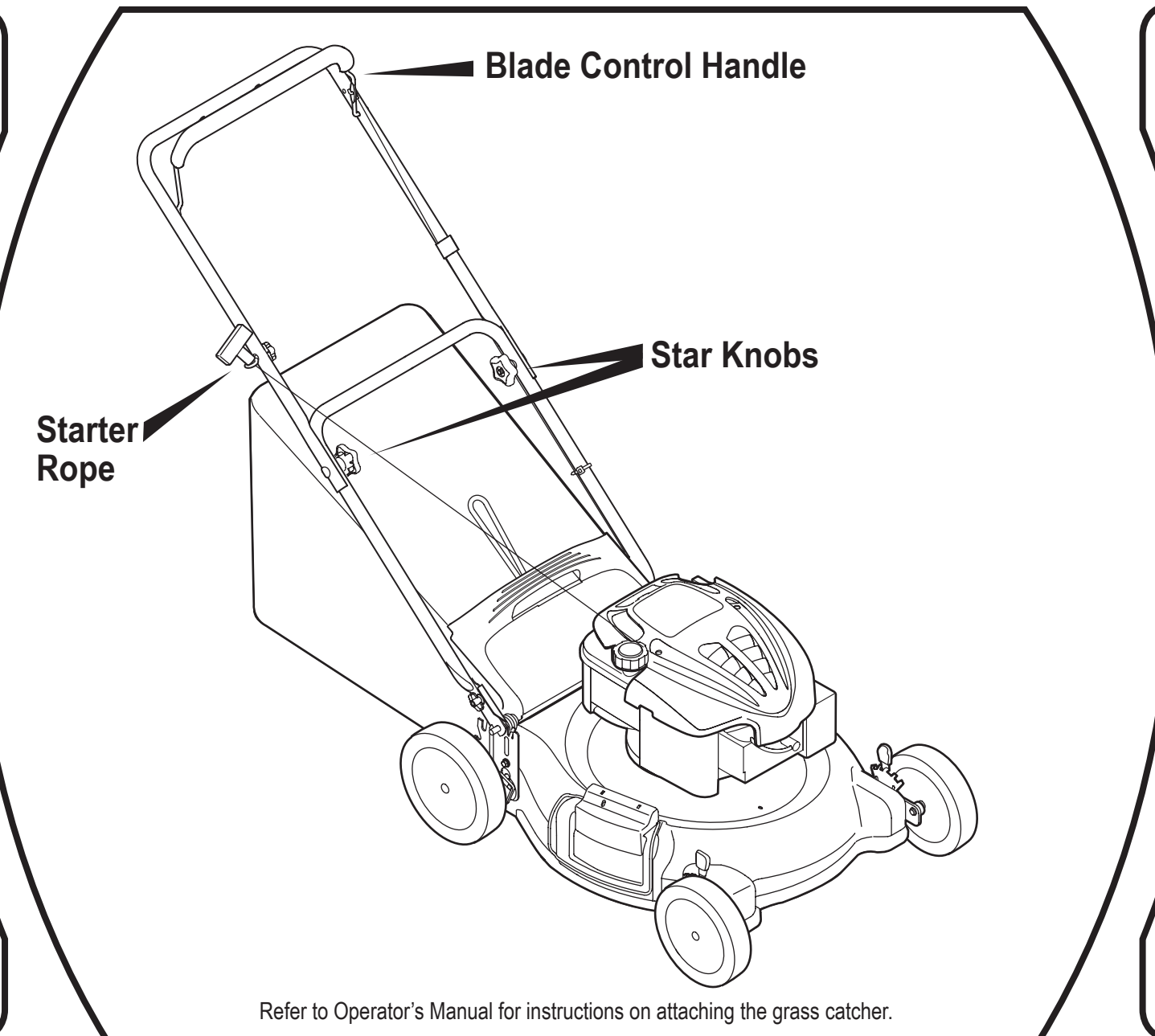
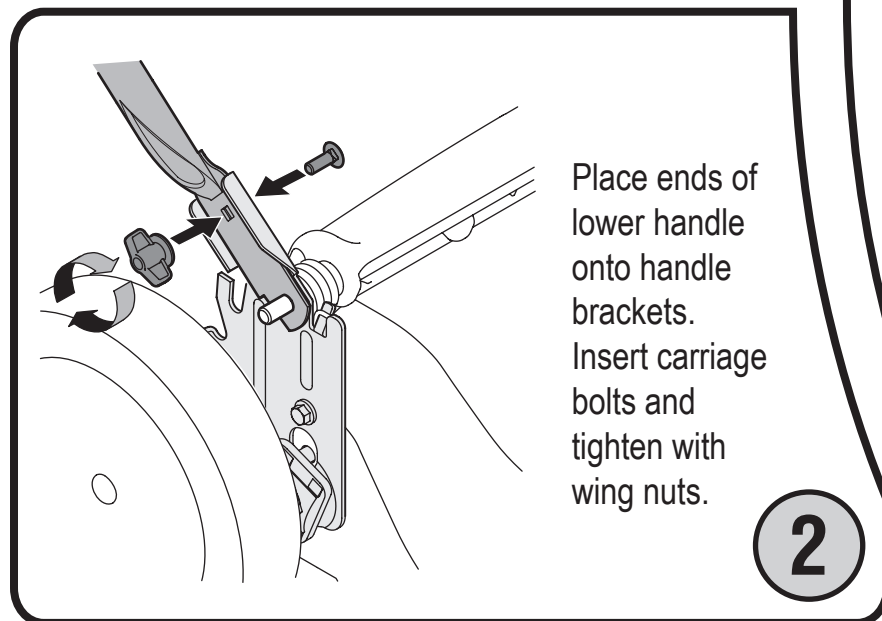
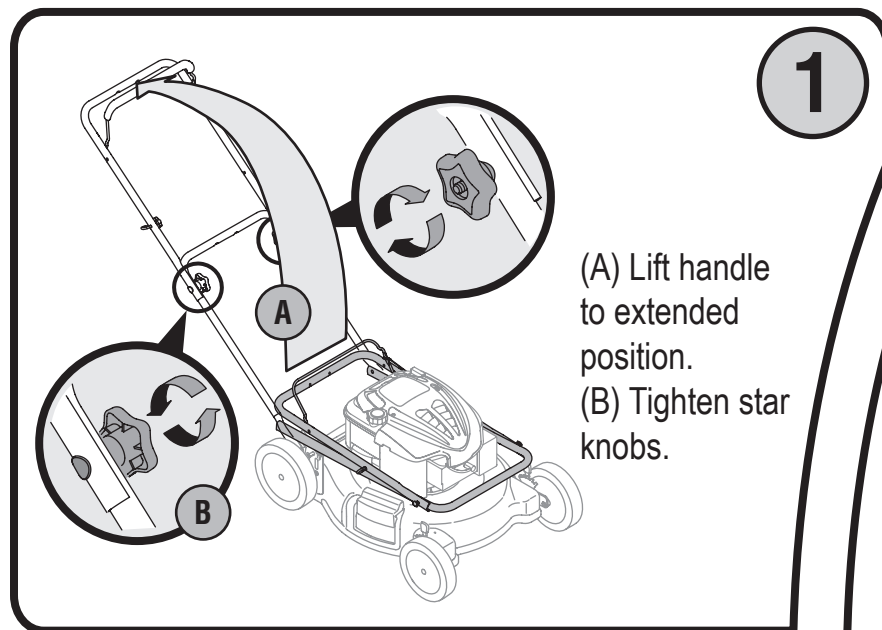
FAST START

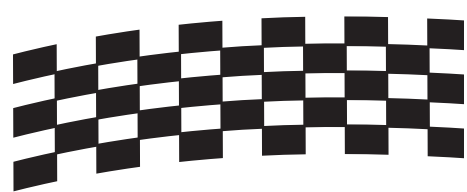
GUIDE



Read and understand all instruction, warning, and danger labels.

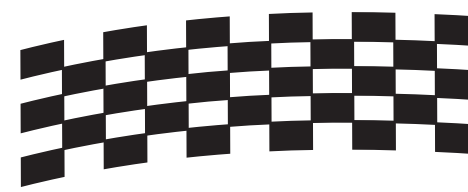
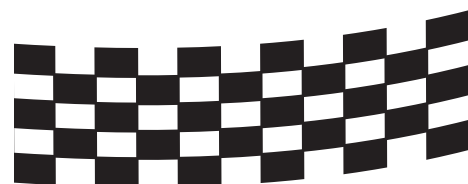
Lea el manual de operación anexo sobre ensamblaje e inicio.





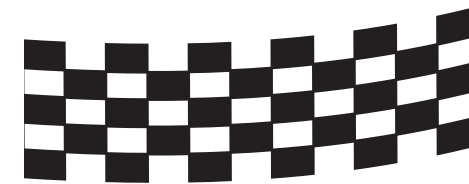
FAST START

GUIDE



FAST START

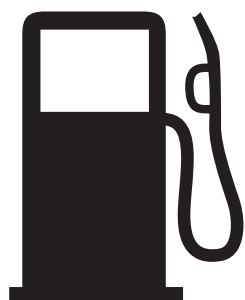
GUIDE



Read and understand all instruction, warning, and danger labels.

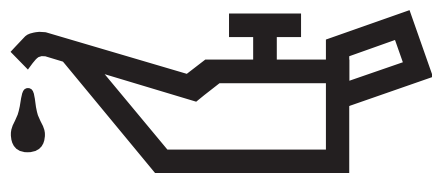
Lea el manual de operación anexo sobre ensamblaje e inicio.

5



Fill tank with gas to within 1/2-inch of top of tank.

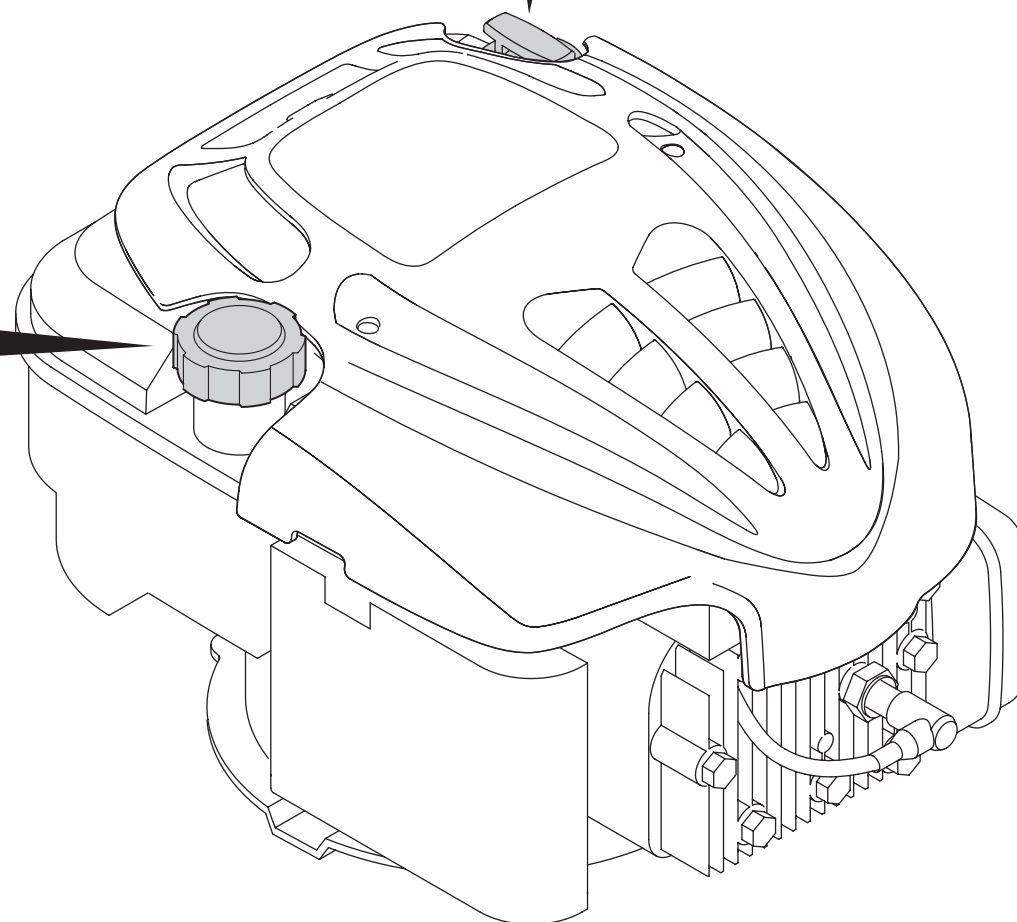
6



Fill engine with entire contents of oil bottle supplied.

Gas Cap

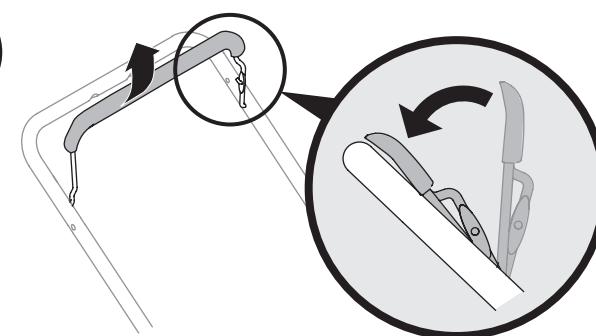
Oil Fill



Need Help?

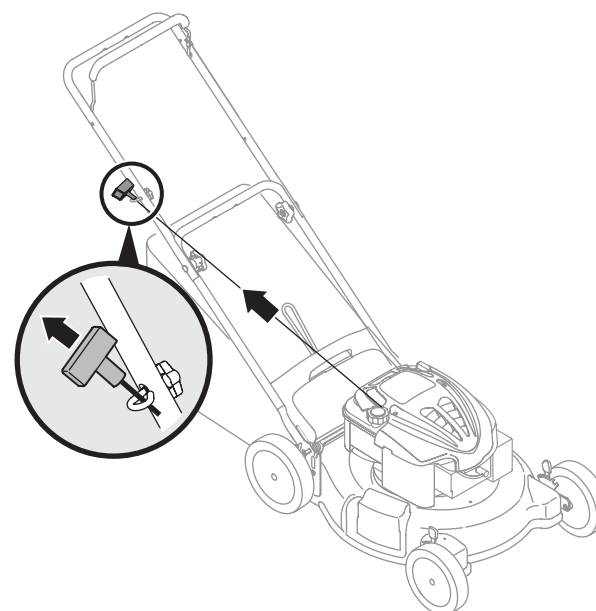
Call 1-888-TO-HELP-U

7



Depress blade control handle and hold.

8



Pull recoil starter with quick, full arm stroke. If engine does not start after ten seconds of repeated pulls, wait a few minutes and repeat.



IMPORTANT: READ OPERATOR'S MANUAL AND ENGINE MANUAL THOROUGHLY AND FOLLOW THE SAFE OPERATION PRACTICES BEFORE OPERATING .

