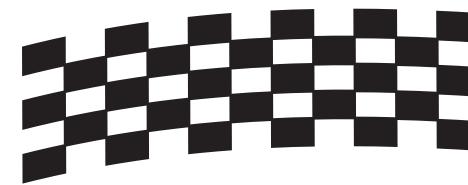
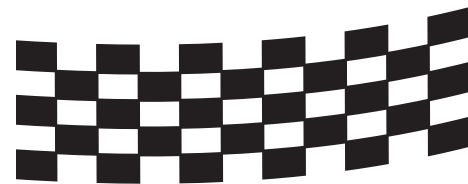


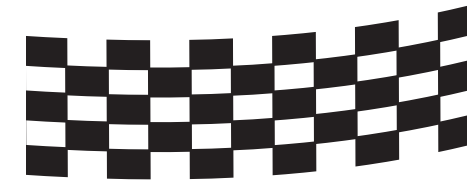
FAST START

GUIDE



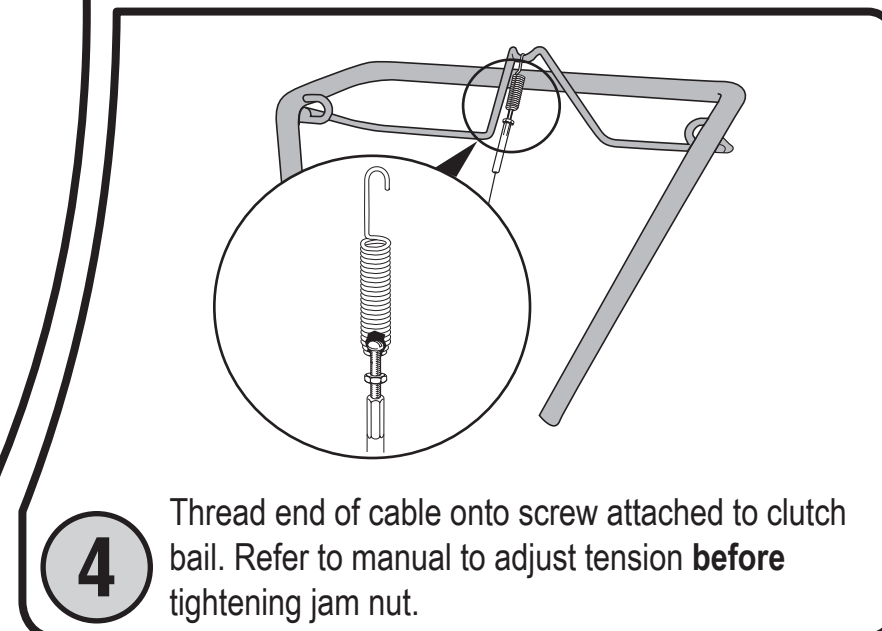
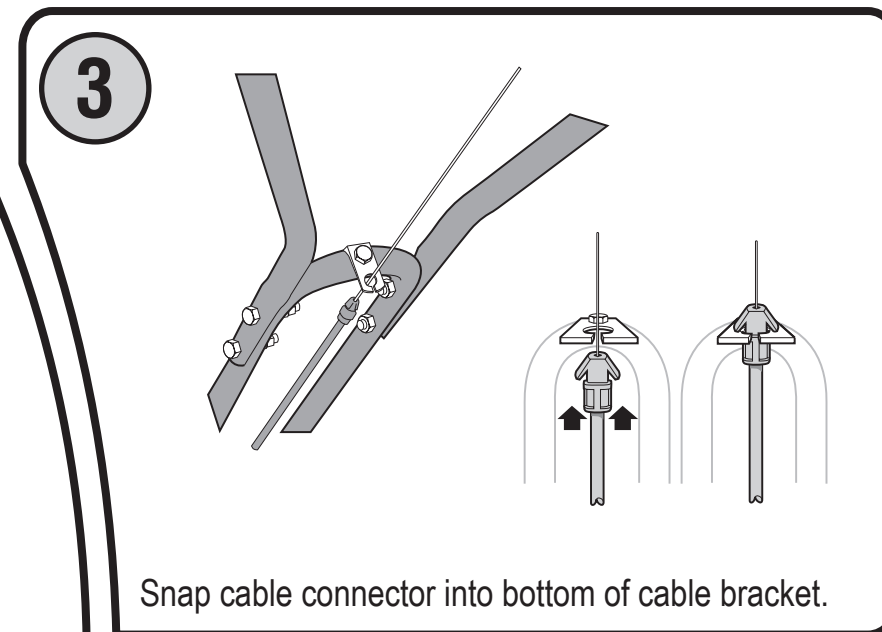
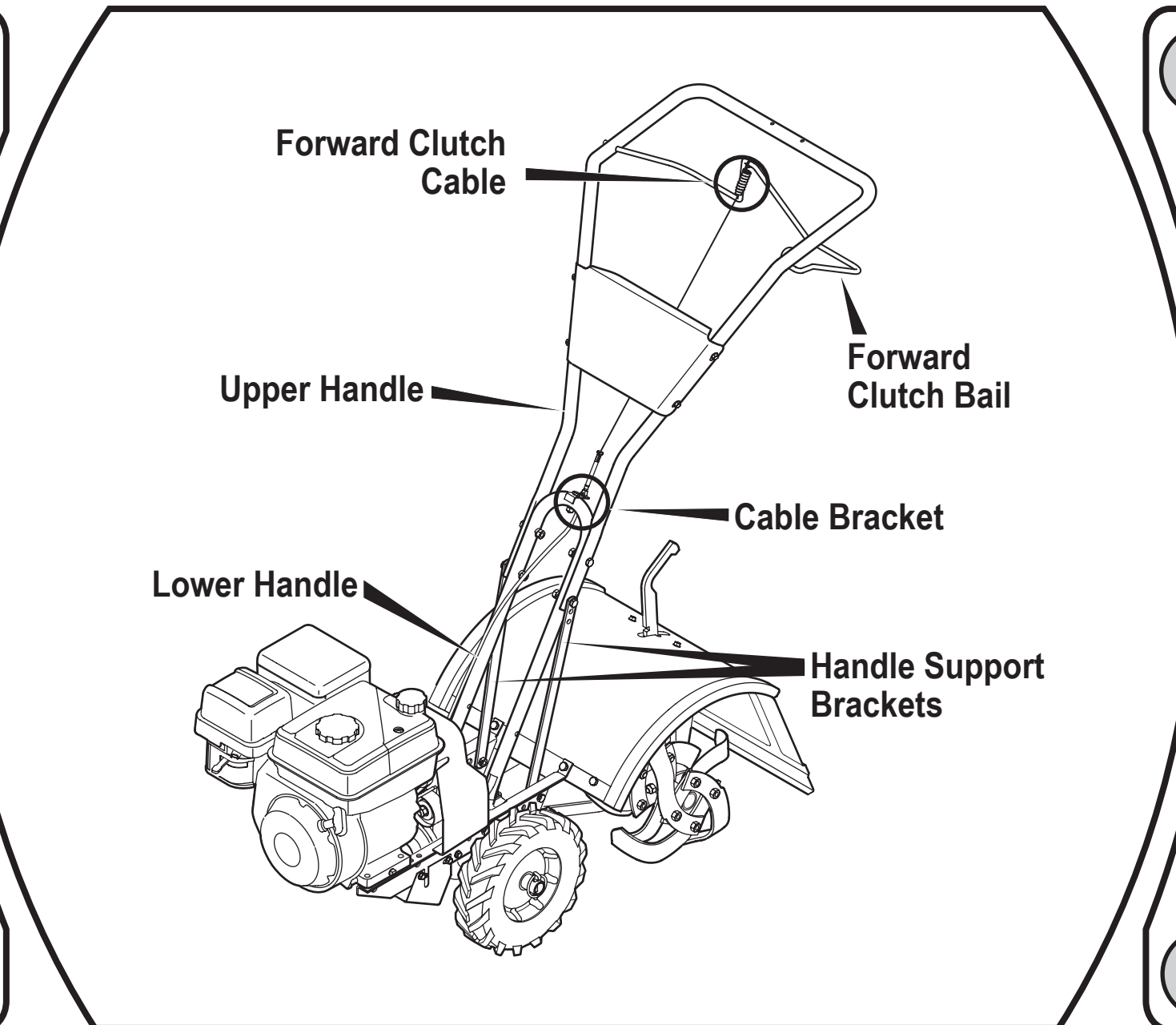
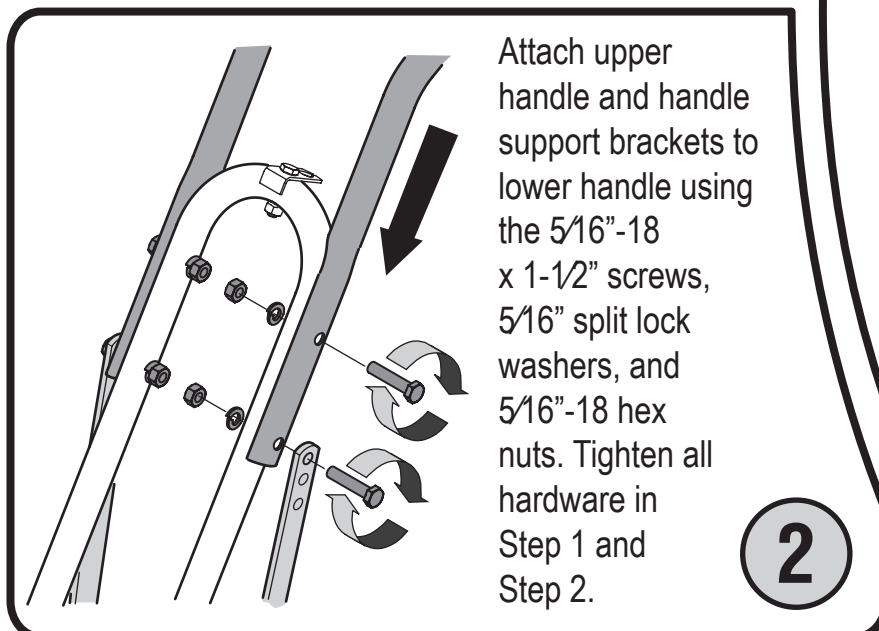
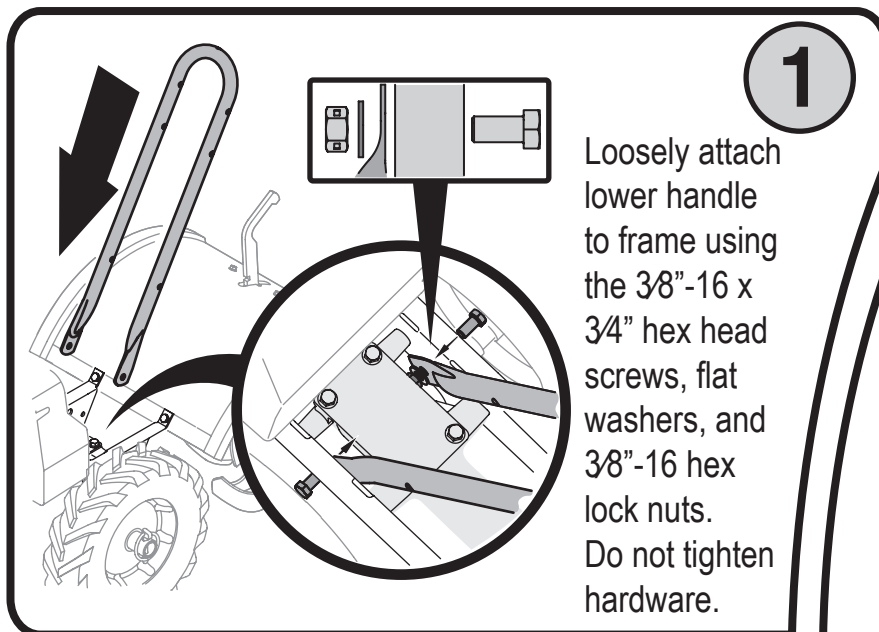
FAST START

GUIDE



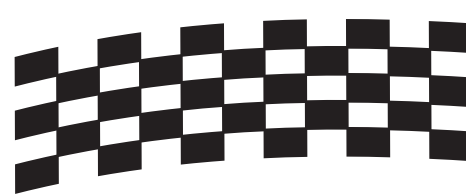
Read and understand all instruction, warning, and danger labels.

Lea el manual de operación anexo sobre ensamblaje e inicio.



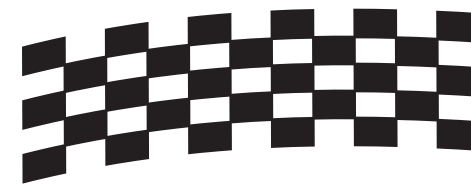
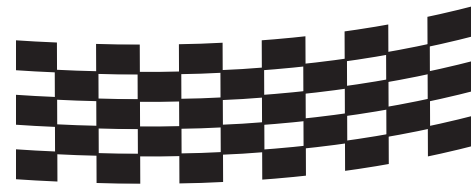
IMPORTANT: READ OPERATOR'S MANUAL AND ENGINE MANUAL THOROUGHLY AND FOLLOW THE SAFE OPERATION PRACTICES BEFORE OPERATING.





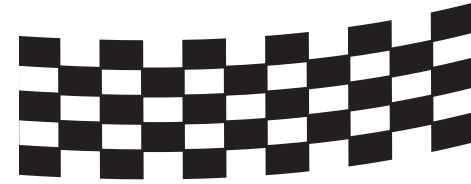
FAST START

GUIDE



FAST START

GUIDE



Read and understand all instruction, warning, and danger labels.

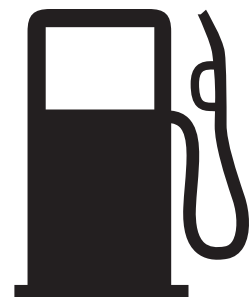
Lea el manual de operación anexo sobre ensamblaje e inicio.

5

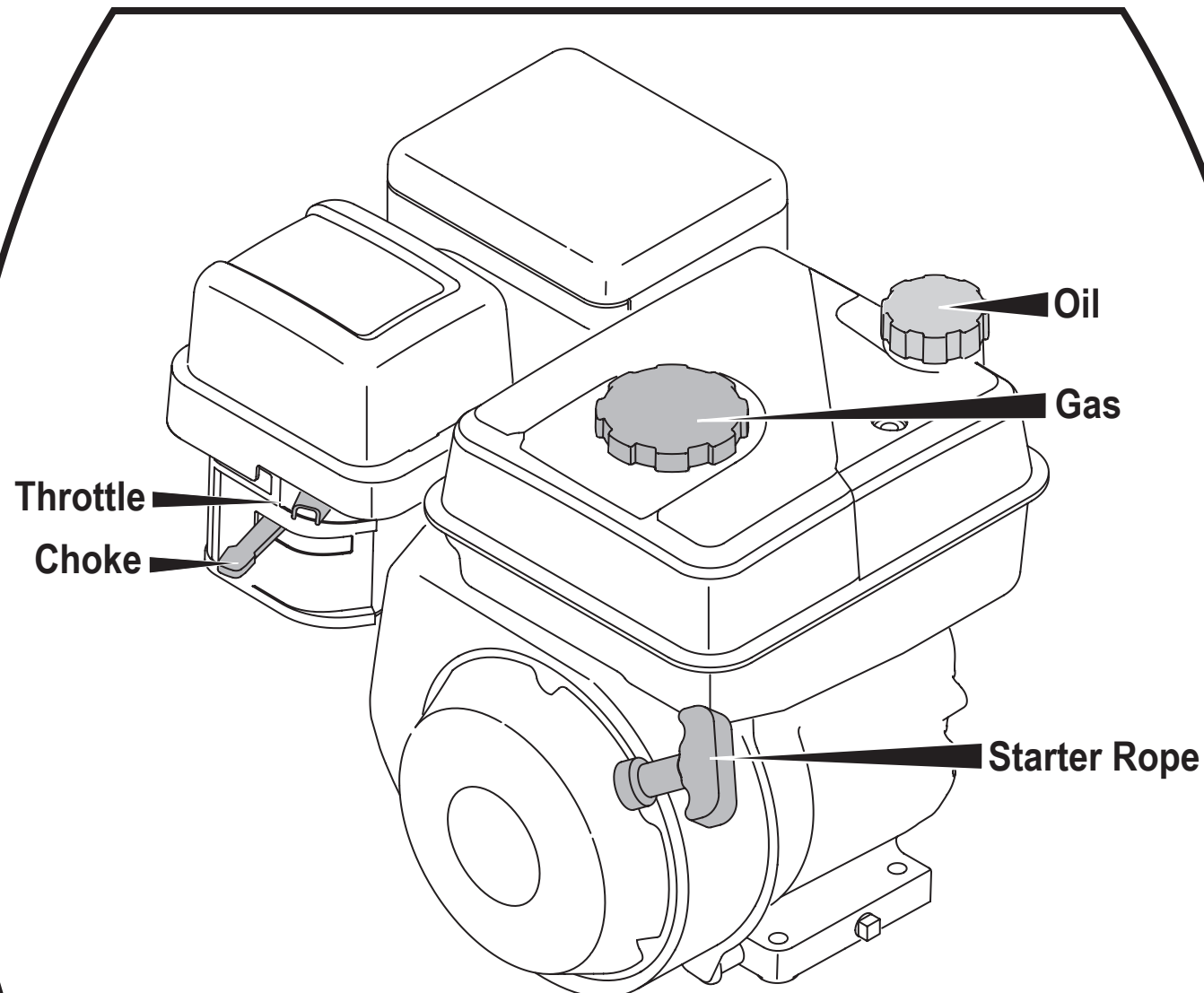


Fill engine with entire contents of oil bottle supplied.

6



Fill tank with gas to within 1/2-inch of top of tank.

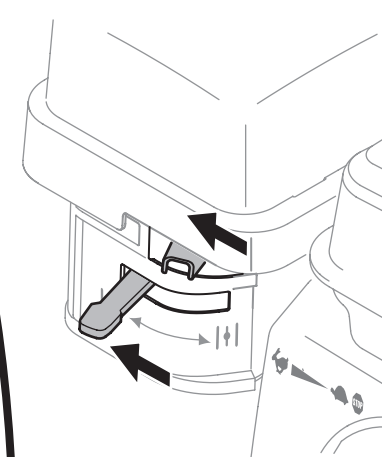


Need Help?

Call 1-888-TO-HELP-U

(1-888-864-3578)

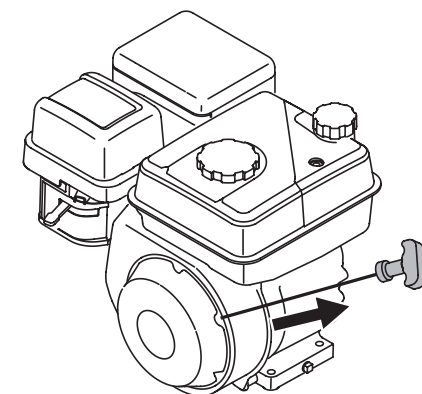
7



Move choke control to full choke position.

Move throttle control to rabbit (fast) position.

8



Pull starter rope with quick, full arm stroke. It may take more than one pull to start cold engine. Once started, slowly move choke control to off (run) position.



IMPORTANT: READ OPERATOR'S MANUAL AND ENGINE MANUAL THOROUGHLY AND FOLLOW THE SAFE OPERATION PRACTICES BEFORE OPERATING.

