



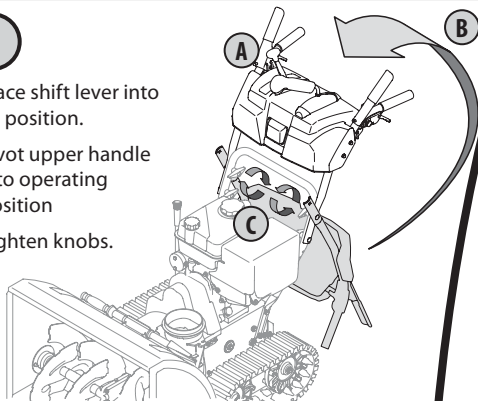
READ AND UNDERSTAND ALL INSTRUCTION, WARNING, AND DANGER LABELS.
PARA INSTRUCCIONES EN ESPAÑOL, REFIÉRASE AL MANUAL DEL OPERADOR.



FAST START GUIDE

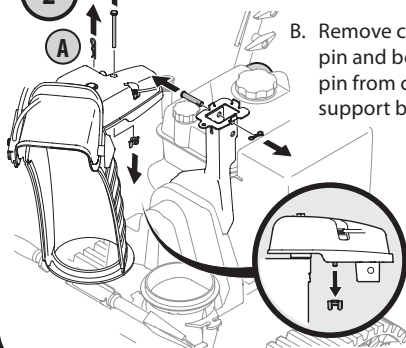
1

- Place shift lever into F6 position.
- Pivot upper handle into operating position
- Tighten knobs.



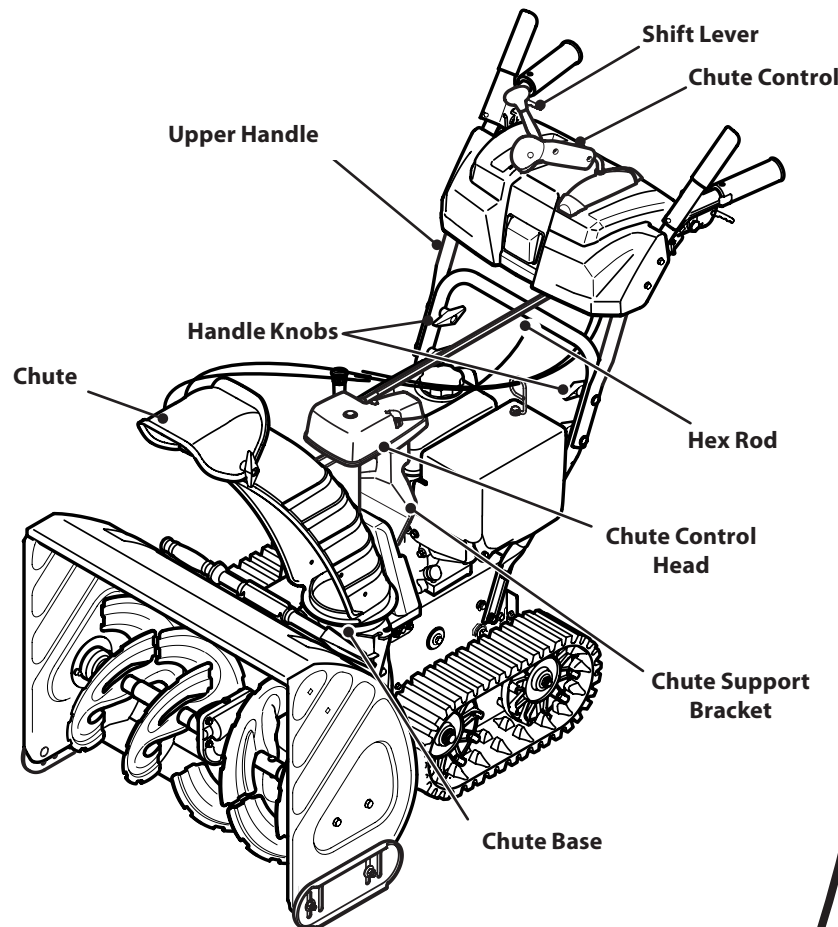
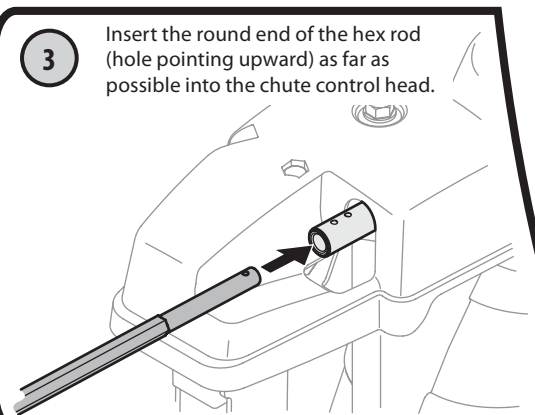
2

- Remove cotter pin, wing nut and hex screw from chute control head.
- Remove clevis pin and bow-tie pin from chute support bracket.

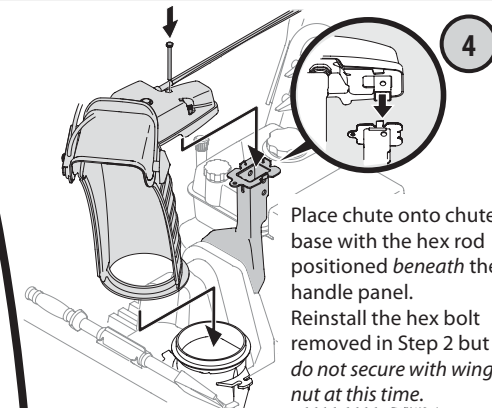


3

Insert the round end of the hex rod (hole pointing upward) as far as possible into the chute control head.



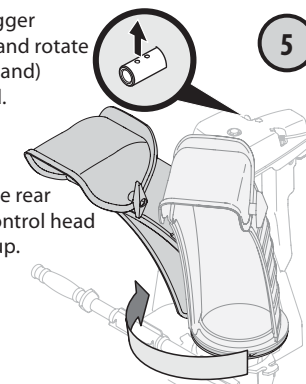
4



Place chute onto chute base with the hex rod positioned *beneath* the handle panel. Reinstall the hex bolt removed in Step 2 but *do not secure with wing nut at this time.*

5

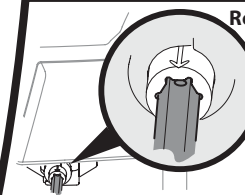
Squeeze the trigger on the joystick and rotate the chute (by hand) to face forward.



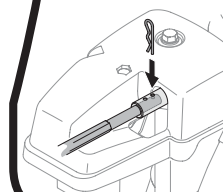
The holes in the rear of the chute control head will be facing up.

6

Rotate the chute control to 1 o'clock, so the silver arrow on the pinion gear faces upward. Insert the hex end of the rod (hole pointing upward) into the pinion gear.



Secure the round end of the hex rod to the chute control head with the cotter pin removed in Step 2. Secure the chute control head to the support bracket with the remaining hardware removed in Step 2.



IMPORTANT: READ OPERATOR'S MANUAL AND ENGINE MANUAL THOROUGHLY AND FOLLOW THE IMPORTANT SAFE OPERATION PRACTICES BEFORE OPERATING .



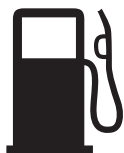
Need Help? Call 1-888-TO-HELP-U



READ AND UNDERSTAND ALL INSTRUCTION, WARNING, AND DANGER LABELS.
PARA INSTRUCCIONES EN ESPAÑOL, REFIÉRASE AL MANUAL DEL OPERADOR.



7



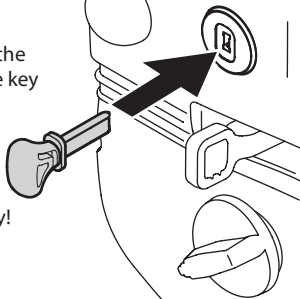
Fill fuel tank with clean, fresh gasoline. Do not fill above the base of fuel tank neck.



Check the oil level using the dipstick. Add oil if necessary. (Refer to the Operator's Manual)

8


Insert the key into the key switch until the key snaps into place.

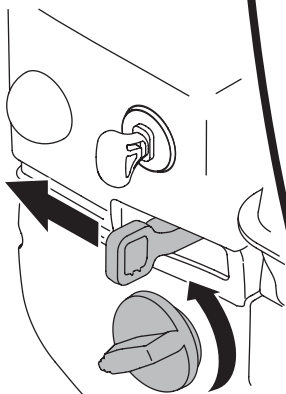


Do *not* turn the key!

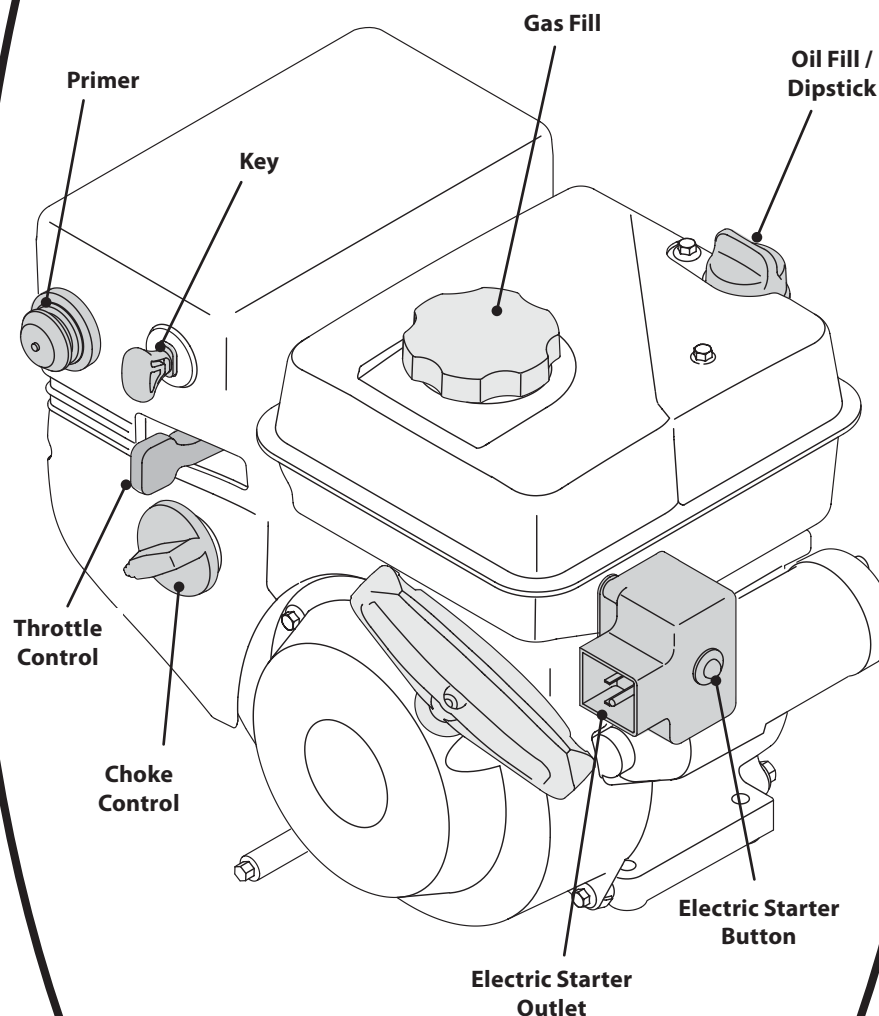
9

Move throttle control into the Fast  position.

Move the choke control into the Choke  position.

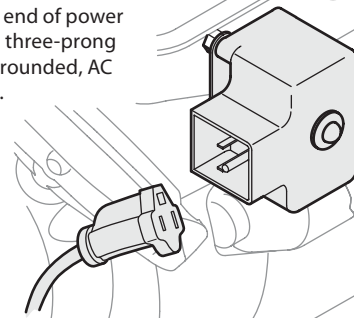


FAST START GUIDE



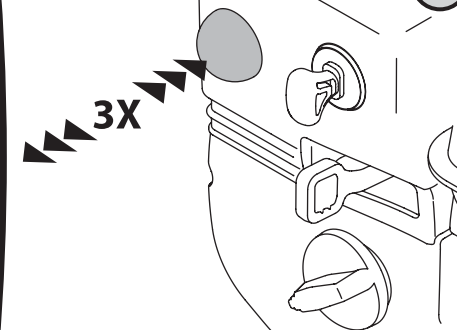
A. Connect power cord to electric starter outlet.

B. Plug other end of power cord into a three-prong 120-volt, grounded, AC receptacle.



10

Push primer three times.

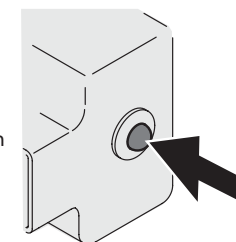


11

A. To start engine, push the starter button.

B. When engine starts, slowly move choke knob into the Run position.

C. Disconnect cord from power receptacle *first* and then from snow thrower's outlet.



12



IMPORTANT: READ OPERATOR'S MANUAL AND ENGINE MANUAL THOROUGHLY
AND FOLLOW THE IMPORTANT SAFE OPERATION PRACTICES BEFORE OPERATING .



Need Help? Call 1-888-TO-HELP-U