



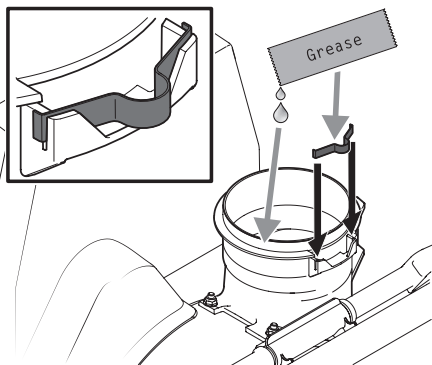
READ AND UNDERSTAND ALL INSTRUCTION, WARNING, AND DANGER LABELS.
PARA INSTRUCCIONES EN ESPAÑOL, REFIÉRESE AL MANUAL DEL OPERADOR.



1

Install the wire spring into the discharge opening of the snow thrower by inserting both ends into the slots provided. Refer to figure below for proper location and orientation of the spring. The inset of the figure shows the spring properly installed with the ends fitted into the slots provided.

NOTE: Place some of the white lithium grease provided on the wire spring and chute adapter ring prior to assembly as shown.

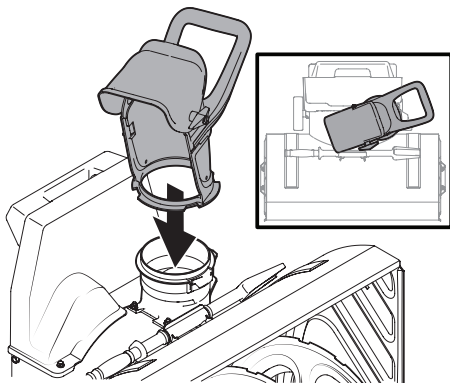


2

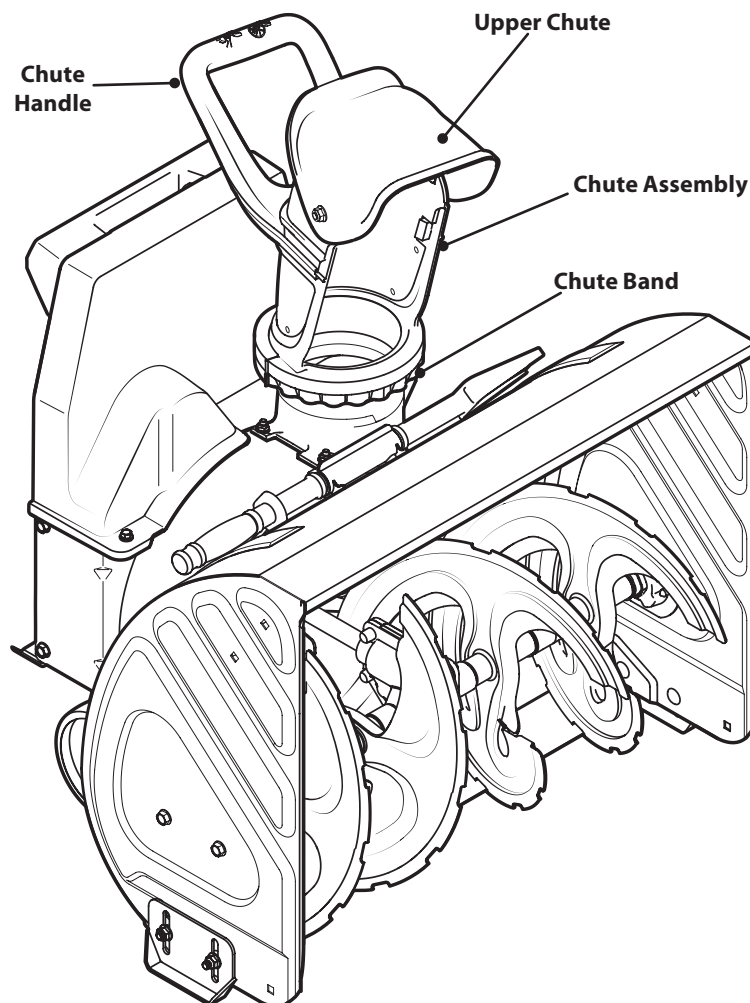
Install the discharge chute, packed loose in the carton, onto the snow thrower attachment.

Note: Position the discharge chute at an angle to the right for ease of installation.

Important: Apply white lithium grease (included with this attachment) onto the chute ring, chute spring, and chute adapter ring prior to assembly.

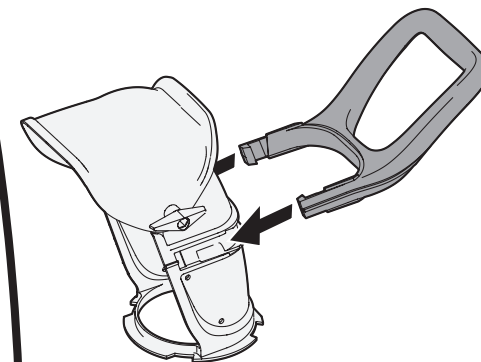


FAST START GUIDE



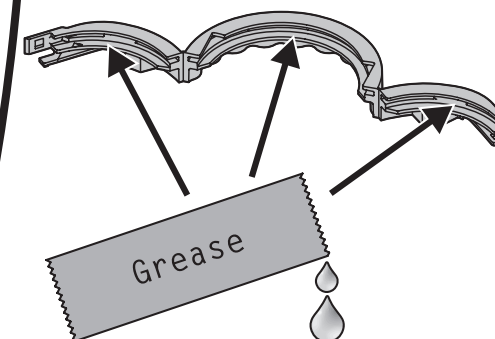
3

Clip the discharge chute handle onto the discharge chute, as shown in the figure below.



4

Place some of the white lithium grease provided on the chute band as shown.



IMPORTANT: READ OPERATOR'S MANUAL AND ENGINE MANUAL THOROUGHLY
AND FOLLOW THE IMPORTANT SAFE OPERATION PRACTICES BEFORE OPERATING .



Need Help? Call 1-888-TO-HELP-U



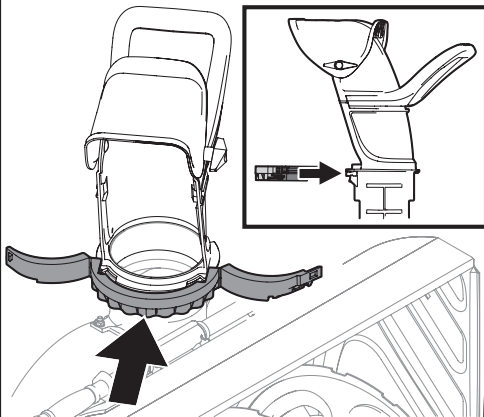
READ AND UNDERSTAND ALL INSTRUCTION, WARNING, AND DANGER LABELS.
PARA INSTRUCCIONES EN ESPAÑOL, REFIÉRESE AL MANUAL DEL OPERADOR.



FAST START GUIDE

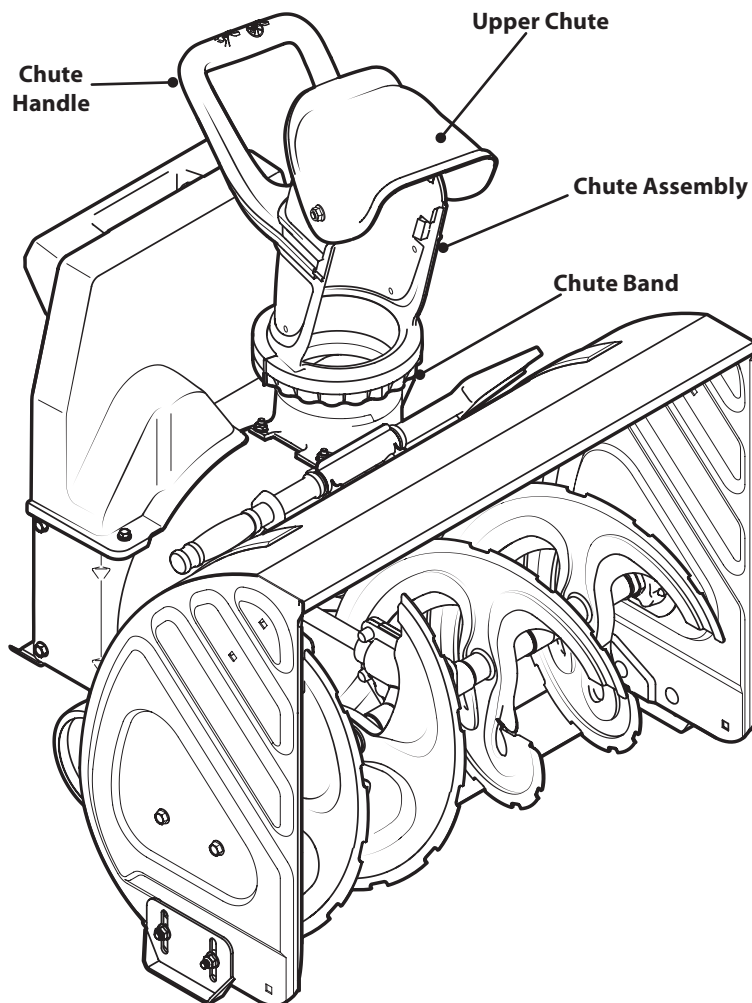
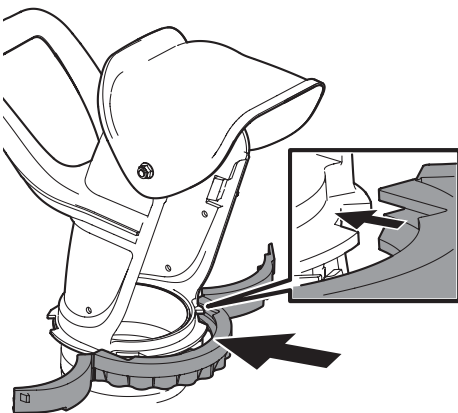
5

Install the chute band as shown in the figure below.



6

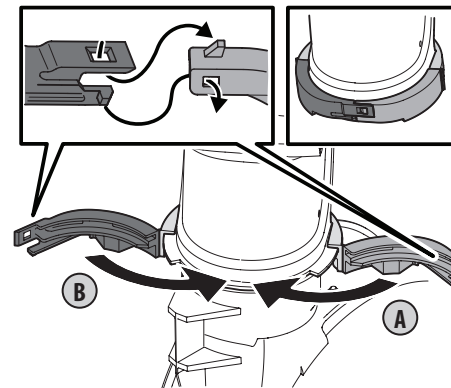
With the discharge chute positioned to the right as shown, install the chute band by lining up the notches in the front with the band, and making certain to fit the discharge chute inside the channel of the chute band, as detailed in the inset of the figure below.



Secure the chute band to itself by first aligning the two snap-fit features and pushing the two ends

7

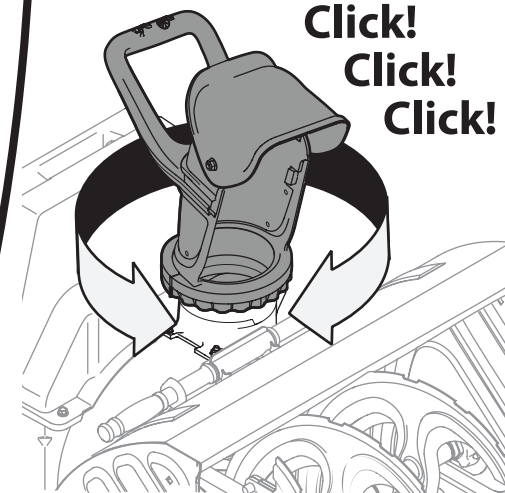
(A & B) together as shown. Be sure both tabs on the two ends engage each other, as shown in the top left inset. When properly assembled, the chute band will appear as in the top right inset.



Note: If the installation has been completed properly, a click! click! click! sound will be heard when rotating the chute to the left and right.

8

**Click!
Click!
Click!**



IMPORTANT: READ OPERATOR'S MANUAL AND ENGINE MANUAL THOROUGHLY
AND FOLLOW THE IMPORTANT SAFE OPERATION PRACTICES BEFORE OPERATING .



Need Help? Call 1-888-TO-HELP-U