



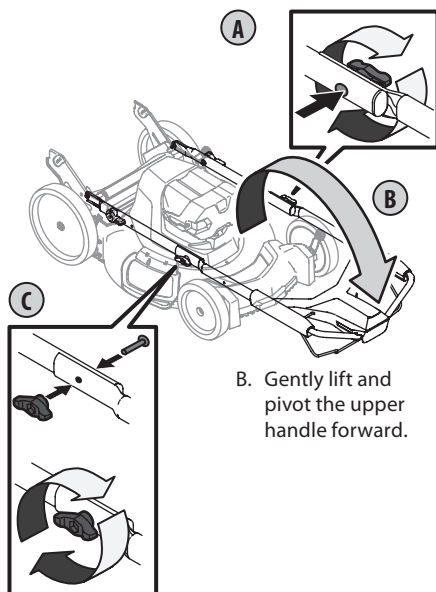
READ AND UNDERSTAND ALL INSTRUCTION, WARNING, AND DANGER LABELS.
PARA INSTRUCCIONES EN ESPAÑOL, REFIÉRESE AL MANUAL DEL OPERADOR.



1

Setting-Up Handle

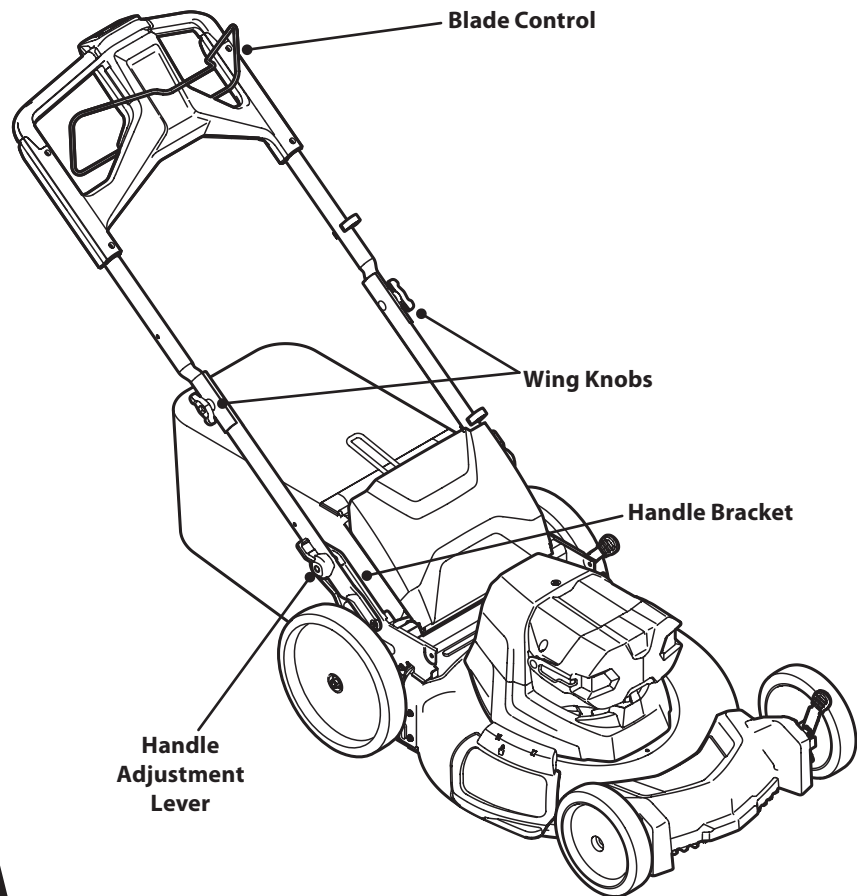
- A. Turning counterclockwise, loosen wing knob securing the left side upper and lower handles together. Remove packaging with wing knob and bolt securing the right side upper and lower handles together.



- B. Gently lift and pivot the upper handle forward.

- C. Remove the wing knob and bolt from packaging removed in STEP A. Insert bolt through the right side upper and lower handles. Turning clockwise, tighten the wing knobs to secure the upper and lower handles together.

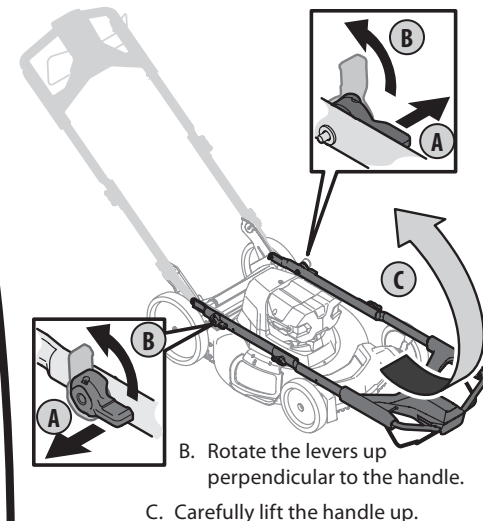
FAST START GUIDE



Note: Refer to your Operator's Manual for instructions on attaching the grass collector.

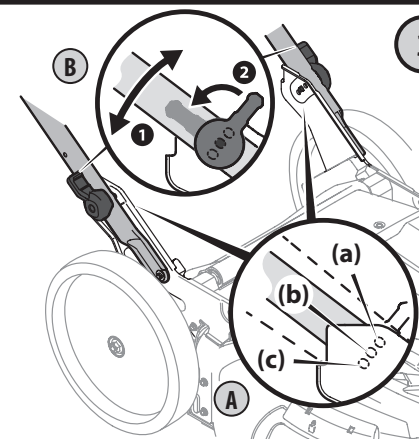
2

- A. Pull out the handle adjustment levers to release the handle adjustment pins from the handle bracket.



- B. Rotate the levers up perpendicular to the handle.
C. Carefully lift the handle up.

3



- A. Place the handle into one of the three handle height positions, high (a), medium (b) or low (c), located on the handle brackets
B. Turn the handle adjustment levers until they are parallel with the handle to release the pins and lock them into one of the handle height holes in the handle brackets.



© 2016 18XEB9C7

778-13524



IMPORTANT: READ OPERATOR'S, BATTERY AND CHARGER MANUALS THOROUGHLY AND FOLLOW THE IMPORTANT SAFE OPERATION PRACTICES BEFORE OPERATING .



Need Help? Call 1-888-TO-HELP-U



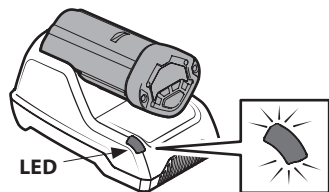
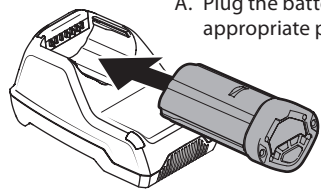
READ AND UNDERSTAND ALL INSTRUCTION, WARNING, AND DANGER LABELS.
PARA INSTRUCCIONES EN ESPAÑOL, REFIÉRESE AL MANUAL DEL OPERADOR.



4

Charging Battery

- A. Plug the battery charger into an appropriate power outlet.

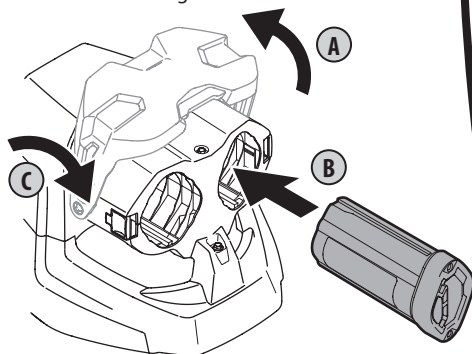


- B. Insert the battery into the charging dock. The LED should illuminate.
- C. Once the battery is fully charged, remove it from the battery charger.

5

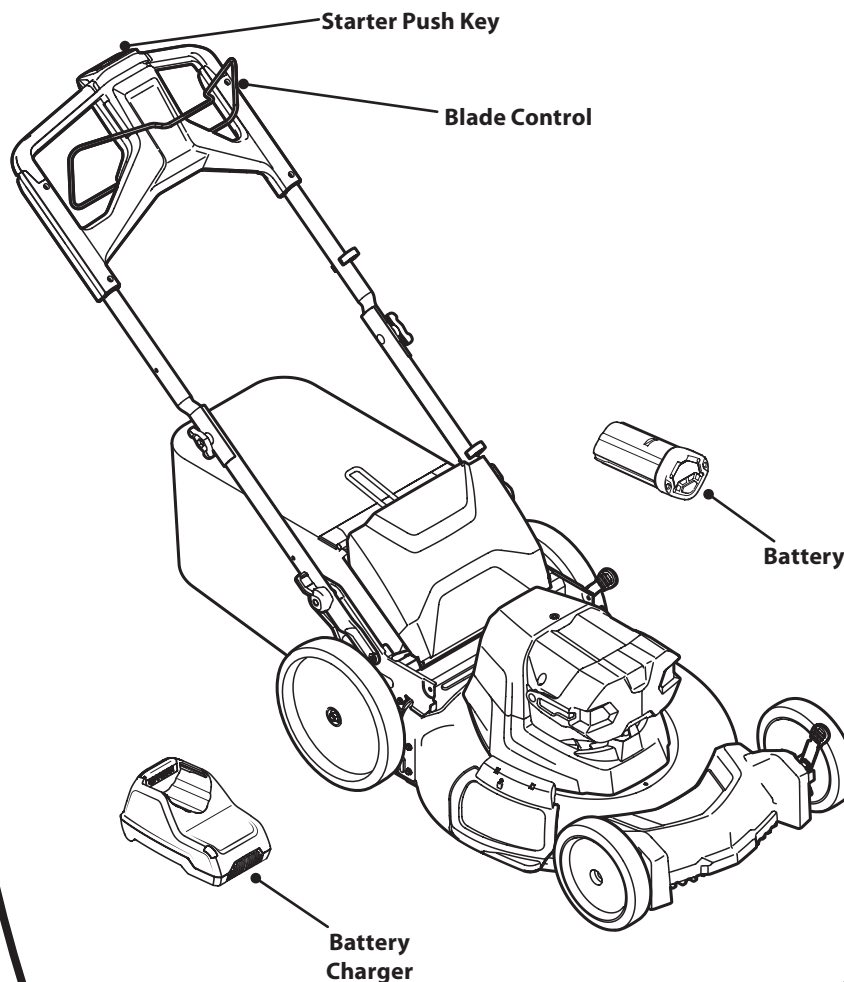
Installing Battery

- A. Lift up the battery housing lid.



- B. With the battery indicator light facing away from the battery latch, slide the battery into the active battery port. Push the battery firmly until the battery locks into place. There should be an audible "click" and the battery latch should be in the upright position.
- C. Close battery housing lid.

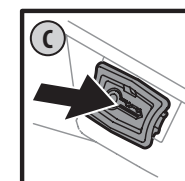
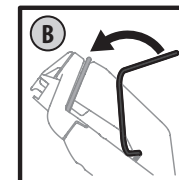
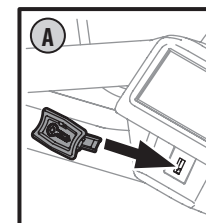
FAST START GUIDE



Starting Motor

6

- A. Insert the push start safety key into the starter housing located in the center of handle panel until it snaps in place.



- B. Standing behind the mower, pull the blade control back against the upper handle.
- C. Push the push start safety key to start the motor.



IMPORTANT: READ OPERATOR'S, BATTERY AND CHARGER MANUALS THOROUGHLY AND FOLLOW THE IMPORTANT SAFE OPERATION PRACTICES BEFORE OPERATING .



Need Help? Call 1-888-TO-HELP-U