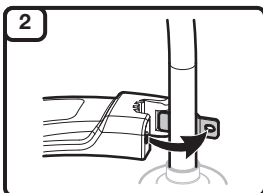
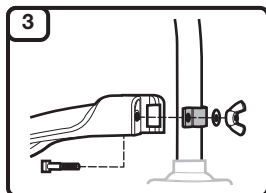




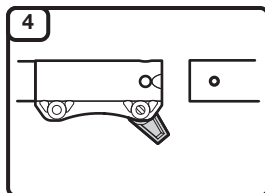
**1**  
Read the operator's manual thoroughly before operating the unit. Follow all warnings and safety instructions. This fast guide is intended as a reference for users that have already read the operator's manual and are familiar with the necessary safety precautions.



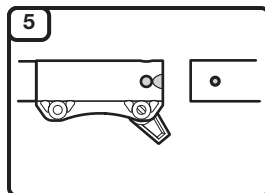
**2**  
**ASSEMBLY**  
Insert the short tab (the one without a hole) on the mount bracket into the slot on the cutting head shield. Rotate the cutting head shield counterclockwise.



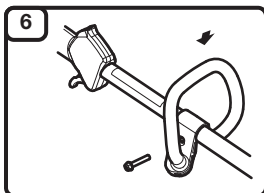
**3**  
Insert the square bolt into the hole underneath the cutting head shield. Push the square bolt through the cutting head shield and mount bracket. Place the washer and wing nut onto the square bolt. Tighten the wing nut securely.



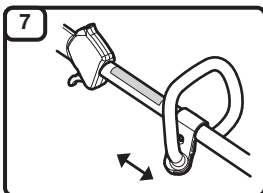
**4**  
Remove the hanger cap from the attachment. If present, remove the gray spacer from the coupler. Turn the knob counterclockwise to loosen the coupler.



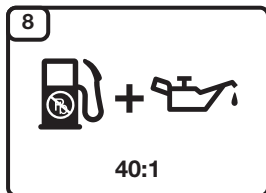
**5**  
Align the release button with the guide recess. Push the attachment straight into the coupler until the release button snaps firmly into the primary hole. Turn the knob clockwise to tighten the coupler.



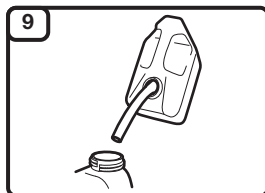
**6**  
Push the handle down onto the upper shaft housing. Make sure the bolt hole faces to the right. Insert the bolt into the bolt hole. Tighten the bolt with a flat-head screwdriver, but do not tighten the bolt completely.



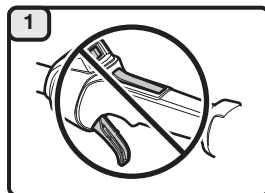
**7**  
Move the handle to a comfortable location. Make sure the handle is positioned beyond the end of the safety label. Tighten the bolt until the handle is secure.



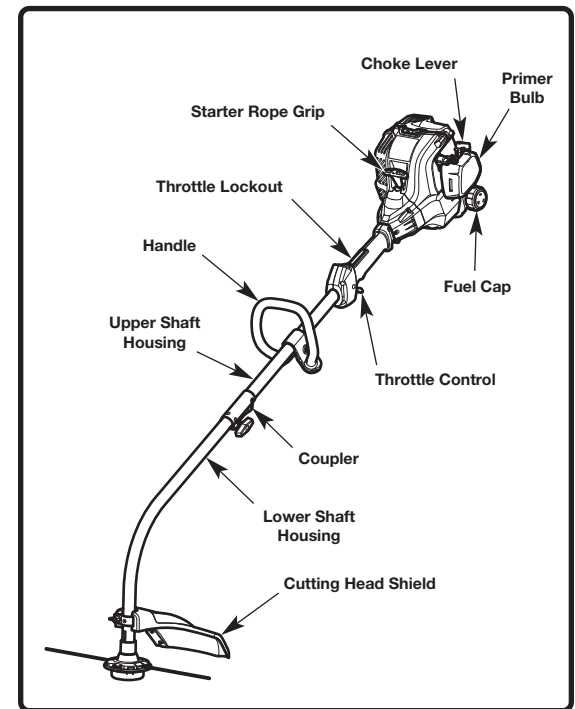
**8**  
Mix thoroughly in a separate fuel can:  
– 3.2 fl. oz. of 2-cycle engine oil  
– 1 gallon of fresh unleaded gasoline (**less than 30 days old**)  
**NOTE:** Do not mix directly in the unit fuel tank.



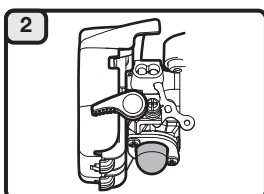
**9**  
Position the unit with the fuel cap facing up. Slowly remove the fuel cap. Fill the fuel tank. Reinstall the fuel cap. Move the unit at least 30 ft. (9.1 m) from the fuel container and the fueling site before starting the engine.



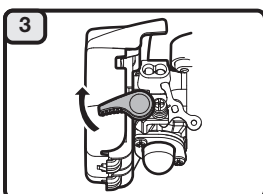
**STARTING**  
**DO NOT squeeze the throttle control until step 7.**



**ASSEMBLY TOOLS REQUIRED**  
• Flat-head screwdriver



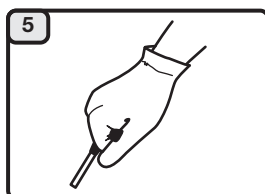
**2**  
Slowly press and release the primer bulb **10 times**.



**3**  
Flip the choke lever clockwise until it clicks.



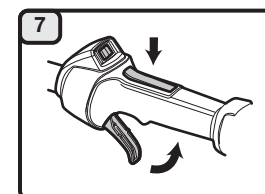
**4**  
Crouch in the starting position.



**5**  
Pull the starter rope with a controlled and steady motion until the unit starts.



**6**  
Idle the engine for 30 seconds.



**7**  
Press and hold the throttle lockout. Squeeze the throttle control as needed for operation.

**DIDN'T START?**  
If the engine does not start after pulling the starter rope 10 times, repeat the starting procedure.  
If the unit still fails to start, refer to the operator's manual for additional starting and troubleshooting information.



**IMPORTANT: READ THE OPERATOR'S MANUAL THOROUGHLY AND FOLLOW THE SAFE OPERATION PRACTICES WHILE OPERATING THE UNIT.**

Lea la traducción en Español en el manual.