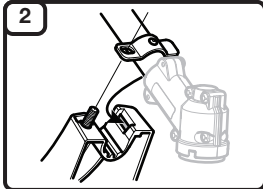
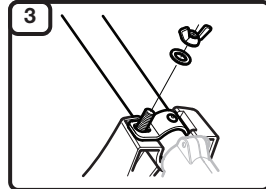




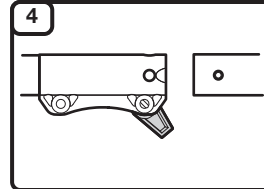
1
Read the operator's manual thoroughly before operating the unit. Follow all warnings and safety instructions. This fast guide is intended as a reference for users that have already read the operator's manual and are familiar with the necessary safety precautions.



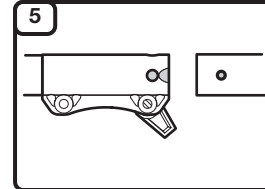
2
ASSEMBLY
Insert the short tab (the one without a hole) on the mount bracket into the slot on the cutting head shield. Insert the bolt on the cutting head shield into the hole on the mount bracket.



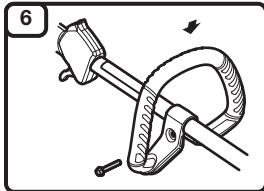
3
Place the washer and wing nut onto the bolt. Tighten the wing nut securely.



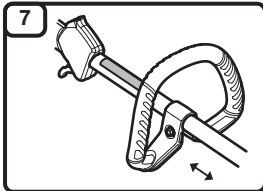
4
Remove the hanger cap from the attachment. If present, remove the gray spacer from the coupler. Turn the knob counterclockwise to loosen the coupler.



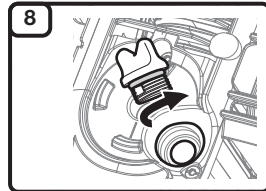
5
Align the release button with the guide recess. Push the attachment straight into the coupler until the release button snaps firmly into the primary hole. Turn the knob clockwise to tighten the coupler.



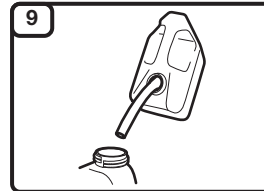
6
Push the handle down onto the upper shaft housing. Make sure the bolt hole faces to the right. Insert the bolt into the bolt hole. Tighten the bolt with a flat-head screwdriver, but do not tighten the bolt completely.



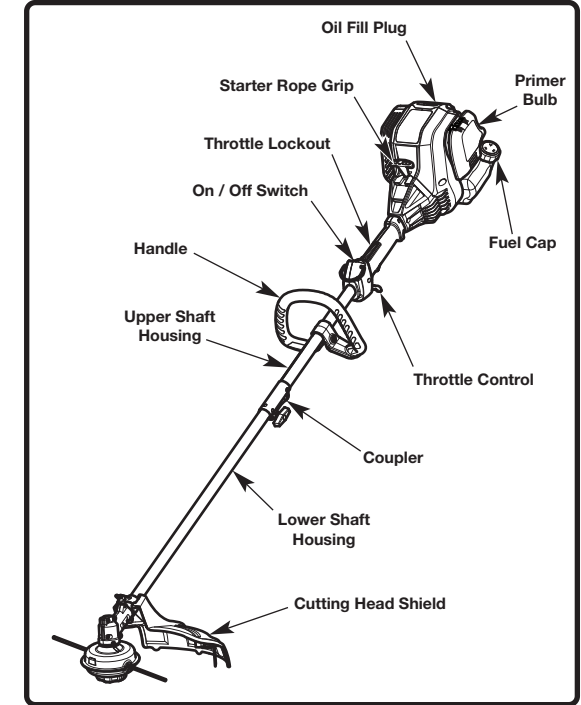
7
Move the handle to a comfortable location. Make sure the handle is positioned beyond the end of the safety label. Tighten the bolt until the handle is secure.



8
Unscrew the oil fill plug. Pour the entire container of oil into the oil fill hole. Reinstall the oil fill plug.
NOTE: DO NOT overfill. Never add oil to the fuel tank. **DO NOT** mix oil with gasoline.

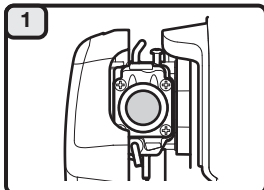


9
Slowly remove the fuel cap. Fill the fuel tank. Reinstall the fuel cap. Move the unit at least 30 ft. (9.1 m) from the fuel container and the fueling site before starting the engine.
NOTE: Use fresh unleaded gasoline (less than 30 days old).



ASSEMBLY TOOLS REQUIRED

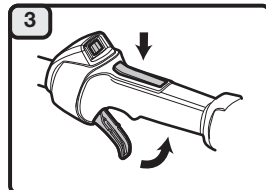
- Flat-head screwdriver



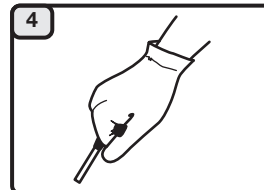
1
STARTING
Slowly press and release the primer bulb **10 times**.



2
Crouch in the starting position.



3
Press and hold the throttle lockout. Squeeze and hold the throttle control.



4
Continue to hold the throttle lockout and throttle control. Pull the starter rope with a controlled and steady motion until the unit starts.

DIDN'T START?
If the engine does not start after pulling the starter rope 10 times, repeat the starting procedure.
If the unit still fails to start, refer to the operator's manual for additional starting and troubleshooting information.



IMPORTANT: READ THE OPERATOR'S MANUAL THOROUGHLY AND FOLLOW THE SAFE OPERATION PRACTICES WHILE OPERATING THE UNIT.

Lea la traducción en Español en el manual.